



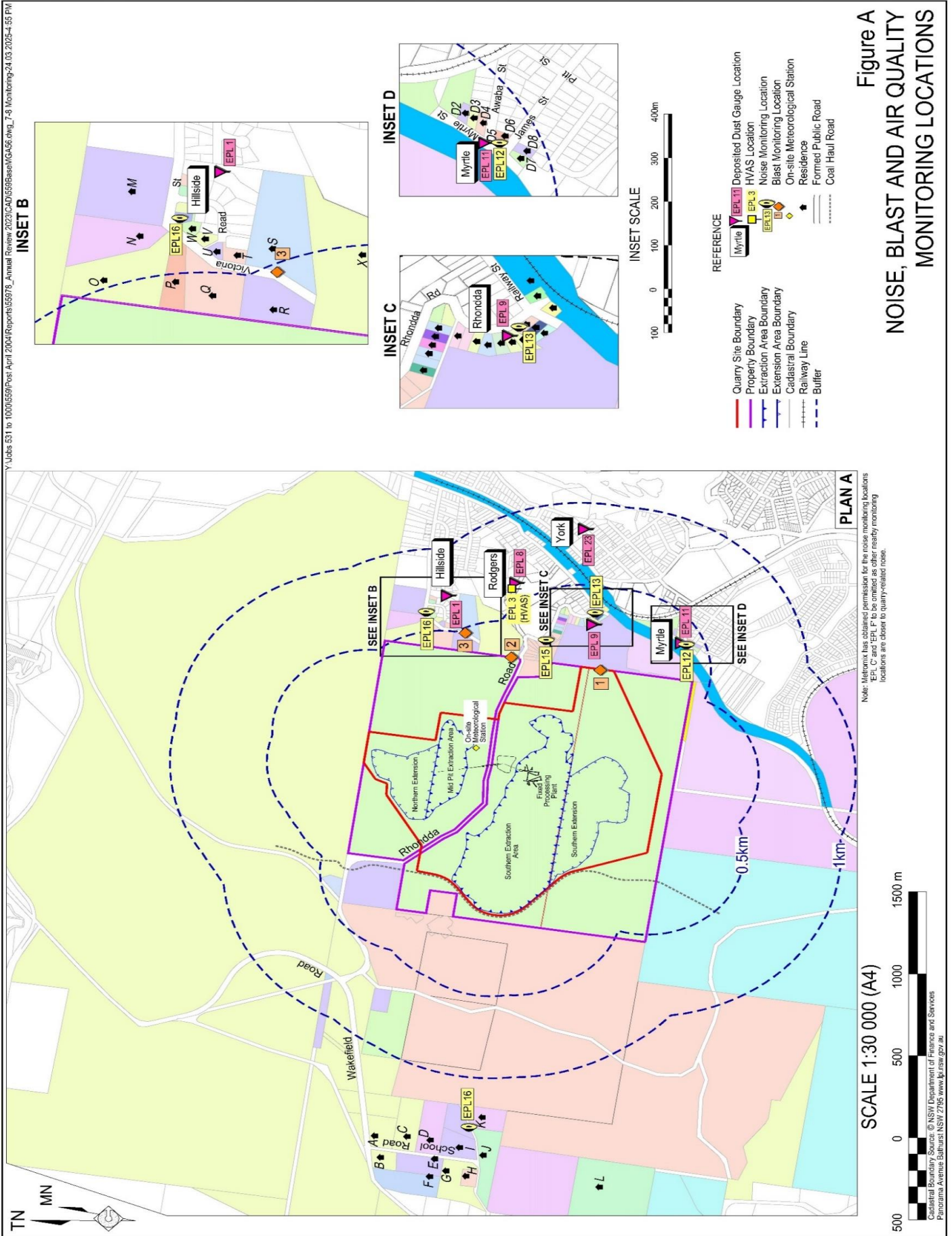
Teralba Quarry Environmental Monitoring Summary

March 2025

Environmental Protection Licence (EPL):	536
Licensee:	Metromix Pty Limited
Licensee Address:	PO Box 1295 Parramatta, NSW 2124
Premises:	Metromix Pty Limited Teralba Quarry Rhondda Road Teralba, NSW 2284
Licensee Website:	https://www.metromix.com.au/
Licensee Website - Monitoring Results:	https://www.metromix.com.au/resources/#quarry
EPA Public Register:	https://www.epa.nsw.gov.au/licensing-and-regulation/public-registers
Prepared by:	R. W. Corkery & Co.
Sample Period:	March 2025
Date Last Data Received	14 April 2025
Date of Report	28 April 2025

Contents

- 1 Deposited Dust
- 2 Particulate Matter (PM₁₀)
- 3 Water
- 4 Meteorological Conditions
- 5 Blasting
- 6 Waste



Deposited Dust

Sample Period Start: 03/03/2025
 Sample Period End: 01/04/2025
 Sample Frequency: 30 ± 2 days
 Sample Collected By: Metromix - CD
 Date Received by Laboratory: 01/04/2025
 Date Results Received by Metromix: 10/04/2025

EPA Identification No.	Location	Criteria (g/m ² /month)	Insoluble Solids (g/m ² /month)	Ash Fraction (g/m ² /month)	% Ash Fraction
1	Hillside Crescent	4.0	0.5	0.2	40
8	Rodgers Street	4.0	0.4	0.2	50
9	Rhondda Road	4.0	0.6	0.3	50
11	Myrtle Street	4.0	1.8	1.2	67
23	York Street	4.0	1.1	0.6	55

Comments

No exceedances of the approved criteria were detected during the sample period.

Deposited Dust - Year to Date

	Rhondda Road			Myrtle Street			Hillside Crescent			Rodgers Street			York Street		
	Total Insoluble Solids	Ash Fraction	% Ash	Total Insoluble Solids	Ash Fraction	% Ash	Total Insoluble Solids	Ash Fraction	% Ash	Total Insoluble Solids	Ash Fraction	% Ash	Total Insoluble Solids	Ash Fraction	% Ash
Units	g/m ² /month	g/m ² /month		g/m ² /month	g/m ² /month		g/m ² /month	g/m ² /month		g/m ² /month	g/m ² /month		g/m ² /month	g/m ² /month	
EPA Approved Level	4.0			4.0			4.0			4.0			4.0		
January	0.7	0.3	43	1.1	0.4	36	0.2	0.1	50	1.4	0.5	36	0.4	0.1	25
February	0.5	0.2	40	0.5	0.2	40	0.2	0.2	100	0.6	0.3	50	1.4	0.7	50
March	0.6	0.3	50	1.8	1.2	67	0.5	0.2	40	0.4	0.2	50	1.1	0.6	55
April															
May															
June															
July															
August															
September															
October															
November															
December															
Annual Average	0.6	0.3	44	1.1	0.6	48	0.3	0.2	63	0.8	0.3	45	1.0	0.5	43
Annual Maximum	0.7	0.3	50	1.8	1.2	67	0.5	0.2	100	1.4	0.5	50	1.4	0.7	55
Annual Minimum	0.5	0.2	40	0.5	0.2	36	0.2	0.1	40	0.4	0.2	36	0.4	0.1	25

Note:

Particulate Matter (PM₁₀)

Sample Location: EPA 3 - Rodgers Street
Sample Frequency: 6 days

Date Sample Taken (24-hr)	Collected by	Date Results Received	PM ₁₀ µg/m ³	24-Hour Average Criteria (µg/m ³)	Year to Date Average Criteria (µg/m ³)
01/03/2025	CBased - TD	7/03/2025	36.0	50	27.2
07/03/2025	CBased - CO	18/03/2025	16.4	50	26.2
13/03/2025	CBased - CO	24/03/2025	10.6	50	24.9
19/03/2025	CBased - CO	27/03/2025	14.3	50	24.1
25/03/2025	CBased - CO	11/04/2025	7.8	50	22.9
31/03/2025	CBased - CO	14/04/2025	10.1	50	22.0
Monthly Average			15.9		25/30*

*Project Approval (PA 10_0183) outlines the annual average PM₁₀ criteria to be 30µg/m³. However, EPL 536 Condition R4.5a) requires that the air quality monitoring data is assessed against the Air Impact Assessment Criteria outlined in EPA's *Approved Methods for the Modelling and Assessment of Air Pollutants in NSW*. The most up to date version of this guideline was published in 2022 and outlines the annual average PM₁₀ criteria to be 25µg/m³. Metromix has considered both criteria for its review of particulate matter monitoring.

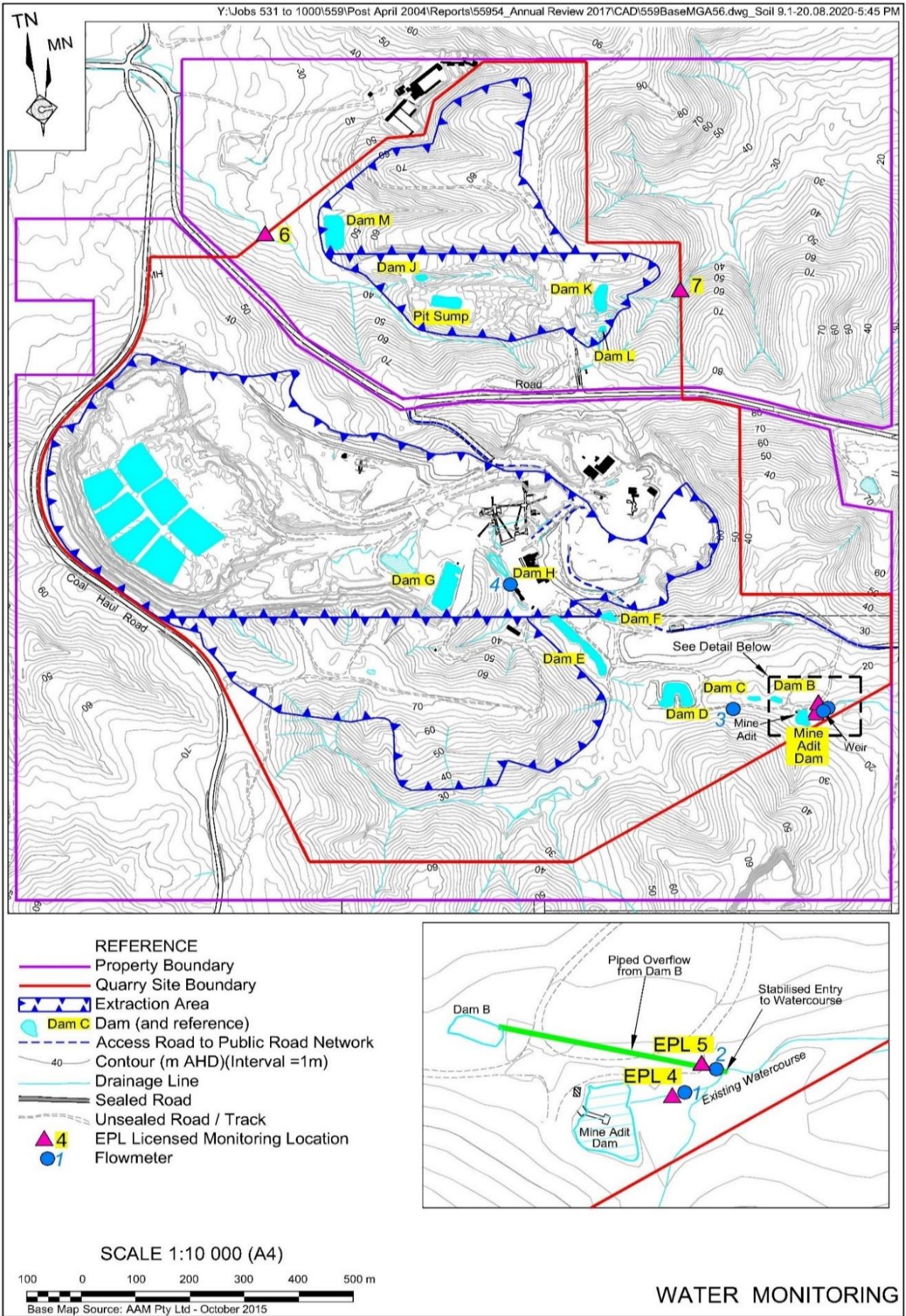
Comments

The monthly average of PM10 results remained below the approved criteria for the sample period. It is noted that the unusually high PM10 result recorded on 1 March 2025 (36.0µg/m3) remains within the approved criteria for a 24-hour averaging period (i.e. 50µg/m3), and is considered an outlier when compared with results from subsequent samples.

Particulate Matter (PM₁₀) - Year to Date

Date	PM ₁₀ (µg/m ³)	Monthly Average (µg/m ³)	Year to Date Average (µg/m ³)	24-Hr Criteria (µg/m ³)	Comments
06/01/2025	44.6	23.6	44.6	50	
12/01/2025	14.3		29.5	50	
18/01/2025	18.7		25.9	50	
24/01/2025	21.3		24.7	50	
30/01/2025	19.2		23.6	50	
05/02/2025	32.6	29.4	25.1	50	
11/02/2025	14.7		23.6	50	
17/02/2025	55.2		27.6	50	See comment in February 2025 Monitoring Summary.
23/02/2025	14.9		26.2	50	
01/03/2025	36	17.0	27.2	50	
07/03/2025	16.4		26.2	50	
13/03/2025	10.6		24.9	50	
19/03/2025	14.3		24.1	50	
25/03/2025	7.8		22.9	50	
31/03/2025	10.1		22.0	50	

Minimum	7.8
Maximum	55.2
Average	22.9
Standard Deviation	13.9
24-hr Criteria	50
Number of Exceedences	1
Annual Average Criteria	25/30*
Annual Average Criteria Exceeded	No
*See explanation on previous page.	



Water**Water Monitoring****EPL Point 4 - Monthly Monitoring**

Date	Time	Sampled By	Date Results Received		pH	EC	TSS	Oil & Grease	Comments
				Units	pH Units	µS/cm	mg/L	mg/L	
				EPL Criterion*	6.5-8.5	NA	<50	10	
				ANZECC Water Quality Limits	6.5-8.5	125-2200	<50	-	
03/03/2025	7:00 AM	Metromix - CD	7/03/2025		7.1	2020	<5	<5	

EPL Point 5 - Monitoring Daily During Discharge

Date	Time	Sampled By	Date Results Received		pH	EC	TSS	Oil & Grease	Comments
				Units	pH Units	µS/cm	mg/L	mg/L	
				EPL Criterion*	6.5-8.5	NA	<50	10	
				ANZECC Water Quality Limits	6.5-8.5	125-2200	<50	-	
No discharge occurred at this location and therefore no monitoring was required.									

EPL Point 6 - Monthly Monitoring

Date	Time	Sampled By	Date Results Received		pH	EC	TSS	Oil & Grease	Comments
				Units	pH Units	µS/cm	mg/L	mg/L	
				EPL Criterion*	6.5-8.5	NA	<50	10	
				ANZECC Water Quality Limits	6.5-8.5	125-2200	<50	-	
No discharge occurred at this location and therefore no monitoring was required.									

EPL Point 7 - Monthly Monitoring

Date	Time	Sampled By	Date Results Received		pH	EC	TSS	Oil & Grease	Comments
				Units	pH Units	µS/cm	mg/L	mg/L	
				EPL Criterion*	6.5-8.5	NA	<50	10	
				ANZECC Water Quality Limits	6.5-8.5	125-2200	<50	-	
No discharge occurred at this location and therefore no monitoring was required.									

Flow Meter Records

EPA Identified Point	Location	Description	Sample Period	Daily Average Flow ML	Monthly Total Flow ML
4	Adit Dam	Adit Dam to Creek (off site)	01/03/2025 - 01/04/2025	0.58	18.0
5	Dam B	Discharge from Dam B (from Quarry)	01/03/2025 - 01/04/2025	0.00	0.002
4	Adit Dam	Water pumped from Adit Dam to Dam G (processing use)	01/03/2025 - 01/04/2025	2.80	86.8

Comments

All water monitoring results remained within the approved criteria levels during the monitoring period.

Water - Year to Date**EPL Point 4 : Monthly Monitoring**

	pH	EC	TSS	Oil & Grease	Comments
Units	pH Units	µS/cm	mg/L	mg/L	-
EPL Criterion*	6.5-8.5	NA	<50	10	-
ANZECC Water Quality Limits	6.5-8.5	125-2200	<50	-	-
January	7.2	2080	5	<5	-
February	7.3	1830	<5	<5	-
March	7.1	2020	<5	<5	-
April					
May					
June					
July					
August					
September					
October					
November					
December					

EPL Point 5 : Monitoring During Discharge

	pH	EC	TSS	Oil & Grease	Comments
Units	pH Units	µS/cm	mg/L	mg/L	-
EPL Criterion*	6.5-8.5	NA	<50	10	-
ANZECC Water Quality Limits	6.5-8.5	125-2200	<50	-	-
01 January	7.3	1090	<5	<5	-
3 February	7.0	1230	6	<5	-
17 February	7.3	1270	<5	<5	-

Flow Meter Records

EPA Identifier	Location	Description	Date	Monthly
4	Adit Dam	Water pumped from Adit Dam to Dam G (processing use)	01/01/2025 - 01/02/2025	73.6
			01/02/2025 - 01/03/2025	75.4
			01/03/2025 - 01/04/2025	86.8

EPA Identifier	Location	Description	Date	Monthly
5	Dam B	Discharge from Dam B (from Quarry)	01/01/2025 - 01/02/2025	0.001
			01/02/2025 - 01/03/2025	0.000
			01/03/2025 - 01/04/2025	0.002

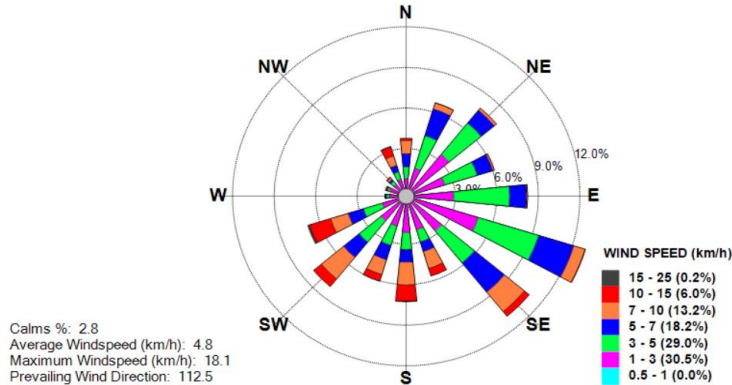
EPA Identifier	Location	Description	Date	Monthly
4	Adit Dam	Adit Dam to Creek (off site)	01/01/2025 - 01/02/2025	45.7
			01/02/2025 - 01/03/2025	32.7
			01/03/2025 - 01/04/2025	18.0

Meteorological Conditions

Monitoring Location: Mid-Pit Entrance
Monitoring Frequency: Continuous

Windrose

Metromix Teralba - Windrose
MARCH 2025



Monthly Summary

Date	Mean Wind Direction (°)	Mean Wind Speed (km/h)	Daily Rainfall (mm)	Mean Sigma Theta	Max Temperature (°C) at 2m	Min Temperature (°C) at 2m
01/03/25	138	5.1	0.0	37.5	30.6	22.2
02/03/25	126	5.1	0.0	35.2	31.7	19.5
03/03/25	201	7.6	5.8	38.9	25.3	19.4
04/03/25	169	6.6	13.0	41.7	26.8	19.1
05/03/25	146	5.8	13.4	44.5	26.4	20.2
06/03/25	135	5.7	4.0	40.6	24.3	19.3
07/03/25	137	5.6	0.4	38.9	25.6	18.3
08/03/25	110	4.7	16.0	35.5	24.2	19.7
09/03/25	84	3.9	0.8	33.6	25.9	20.1
10/03/25	62	2.6	0.6	30.1	23.4	20.3
11/03/25	98	3.0	1.8	31.5	23.5	20.3
12/03/25	135	2.4	4.8	34.0	25.0	19.8
13/03/25	134	3.0	0.0	26.8	29.8	18.9
14/03/25	139	3.3	0.0	30.4	35.3	18.2
15/03/25	143	5.3	0.0	29.3	36.3	21.6
16/03/25	243	8.8	0.0	35.5	36.6	24.0
17/03/25	194	8.8	0.0	41.5	29.7	16.4
18/03/25	138	3.4	0.0	35.0	24.4	15.6
19/03/25	65	3.9	0.0	30.0	30.1	17.7
20/03/25	82	4.3	0.0	27.4	32.3	18.3
21/03/25	160	5.1	10.4	24.5	26.0	19.1
22/03/25	194	4.2	1.4	40.7	26.5	19.9
23/03/25	207	2.3	13.6	32.5	21.7	19.0
24/03/25	135	2.6	4.2	25.8	24.6	20.8
25/03/25	146	3.1	0.8	37.5	25.8	19.9
26/03/25	143	2.3	0.0	27.2	26.4	19.4
27/03/25	142	3.2	0.0	28.6	26.3	19.1
28/03/25	107	3.2	6.6	27.6	24.7	19.1
29/03/25	205	3.4	66.6	30.5	21.0	18.8
30/03/25	236	10.5	3.8	29.8	25.2	18.6
31/03/25	225	9.0	3.6	34.4	24.1	17.8

Meteorological Conditions - Year to Date

Monitored Parameter	Jan	Feb	Mar	Apr	May	Jun	Jul	Aug	Sep	Oct	Nov	Dec	Annual
Total Rainfall (mm)	236.2	54.6	171.6										462.4
Average Minimum Temperature (°C) at 2m	14.8	14.6	15.6										15.0
Average Maximum Temperature (°C) at 2m	42.1	36.7	36.6										38.5
Average Minimum Temperature (°C) at 10m	14.8	13.4	15.9										14.7
Average Maximum Temperature (°C) at 10m	41.0	37.4	36.0										38.1
Average Sigma Theta	35.4	33.9	33.5										34.3
Average Solar Radiation (W/m ²)	179.0	187.1	123.8										163.3
Average Relative Humidity (%)	74.0	73.0	76.0										74.3

Blasting

Monitoring Frequency Each Blast

Blast Monitoring Completed By MAXAM

Shot #	Day	Month	Time	Location	Elevation (m)	Location 1		Location 2		Location 3		Comments
						Overpressure	Vibration	Overpressure	Vibration	Overpressure	Vibration	
						dB(L)	mm/s	dB(L)	mm/s	dB(L)	mm/s	
1	20	January	13:56:46	Stage 2B-1	RL48	110.4	0.22	101.7	0.06	NM	NM	
2	24	January	12:11:50	Stage 1C	RL34	105.1	0.51	99.1	0.05	NM	NM	
3	4	February	15:07:26	Stage 2B-1	RL48	113.6	0.14	105.7	0.06	NM	NM	
4	5	February	10:50:25	Stage 2B-3	RL57	106.3	0.1	99.4	0.08	NM	NM	
5	13	February	12:24:26	Stage 1C	RL34	105.4	0.41	99.4	0.08	NM	NM	
6	20	February	13:06:57	Stage 2B-1	RL40	110.7	0.1	105.8	0.08	NM	NM	
7	5	March	12:47:41	Stage 1C	RL34	104.7	0.4	104	0.14	NM	NM	
8	14	March	13:28:18	Stage 2B-3	RL48	104.7	0.25	102.2	0.09	NM	NM	
9	25	March	13:30:35	Stage 1C	RL34	105.4	0.42	103.6	0.06	NM	NM	

NT Not Triggered

NM Not Monitored

Blasting Criteria

Parameter	Units of Measure	Limit	
		95% of blasts per year	100% of blasts
Airblast Overpressure (Linear Peak)	decibels (dBL)	115	120
Ground Vibration (Peak Particle Velocity)	millimeters per second	5	10

Comments

Three blasting events occurred during the monitoring period. All blast monitoring results were within the approved criteria.

Waste Management**Waste Removal Summary**

Month	January	February	March	April	May	June	July	August	September	October	November	December
Item	Quantity	Quantity	Quantity	Quantity	Quantity	Quantity	Quantity	Quantity	Quantity	Quantity	Quantity	Quantity
General Waste Bin (10m ³)	-	-	-									
General Waste Bin (4.5m ³)	-	-	-									
General Waste Bin (6m ³)	-	-	-									
General Waste Bin (20m ³)	1	-	1									
Paper & Cardboard Bin (3m ³)	-	1	1									
Shredded Paper Bin (240L)	1	2	-									
Co Mingled Recycling (2 x 240 L)	4	4	4									
Tonner Cartridges	-	27	-									
Waste Oil (L)	-	-	-									
Scrap Steel (t)	10.78	-	-									
Timber (m ³)	-	-	-									
Engine Coolant (L)	-	-	-									
Oil Filters (240L bin)	-	-	-									
Batteries	-	-	-									
Batteries - Office	-	-	-									
Oily Rags (240L bin)	-	-	-									
Aerosols (120L bin)	-	-	-									
Tyres	-	-	-									
Other	-	-	-									
Oily Water (L)	-	5.96	-									
Grease Waste (L)	-	-	-									