



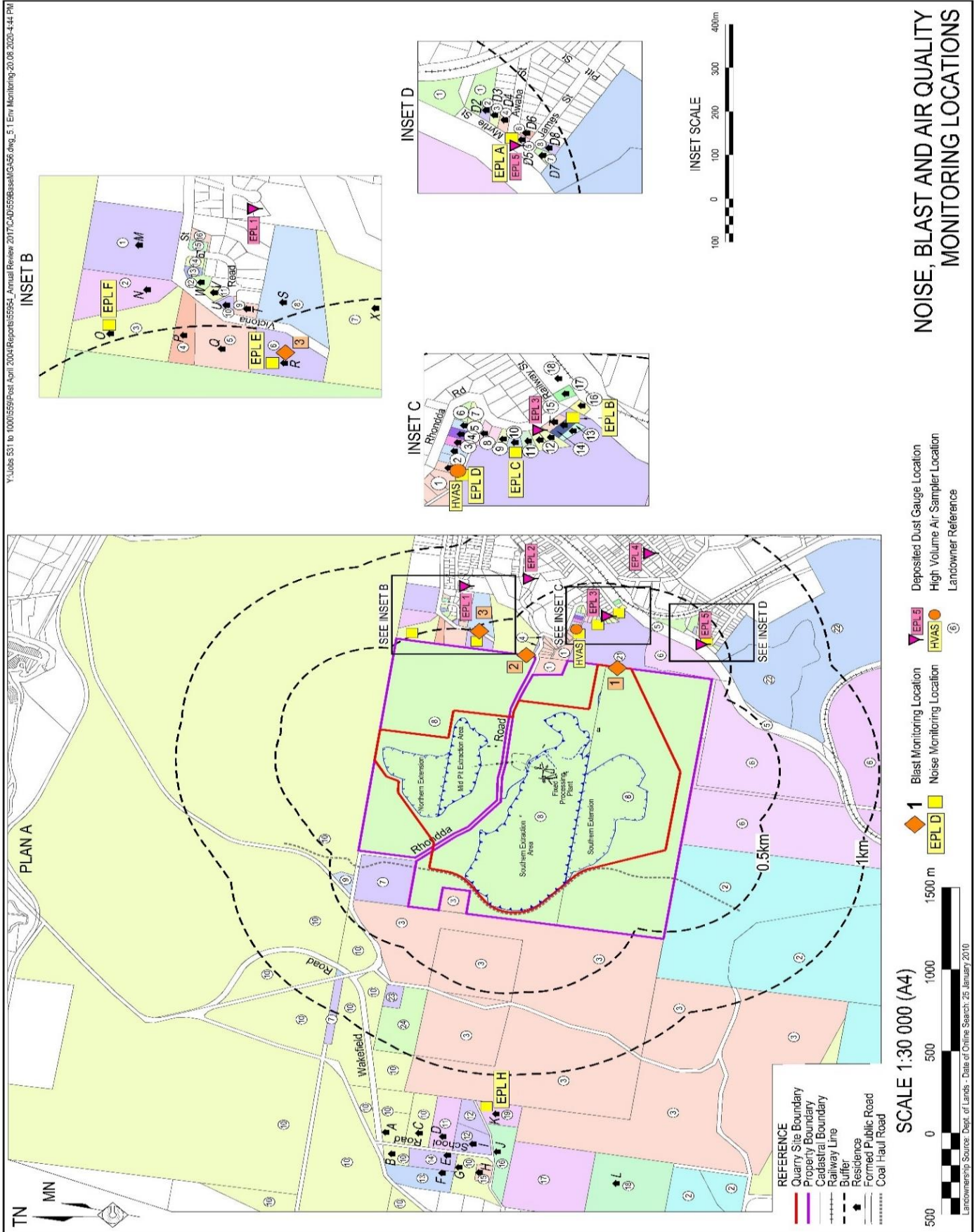
Teralba Quarry Environmental Monitoring Summary

January 2024

Environmental Protection Licence (EPL):	536
Licensee:	Metromix Pty Limited
Licensee Address:	PO Box 1295 Parramatta, NSW 2124
Premises:	Metromix Pty Limited Teralba Quarry Rhondda Road Teralba, NSW 2284
Licensee Website:	https://www.metromix.com.au/
Licensee Website - Monitoring Results:	https://www.metromix.com.au/resources/#quarry
EPA Public Register:	https://www.epa.nsw.gov.au/licensing-and-regulation/public-registers
Prepared by:	R. W. Corkery & Co.
Sample Period:	January 2024
Date Last Data Received	15 March 2024
Date of Report	28 March 2024

Contents

- 1 Deposited Dust
- 2 Particulate Matter (PM₁₀)
- 3 Water
- 4 Meteorological Conditions
- 5 Blasting
- 6 Waste



Deposited Dust

Sample Period Start: 02/01/2024
 Sample Period End: 01/02/2024
 Sample Frequency: 30 ± 2 days
 Sample Collected By: Metromix - CD
 Date Received by Laboratory: 01/02/2024
 Date Results Received by Metromix: 14/02/2024

EPA Identification No.	Location	Criteria (g/m ² /month)	Insoluble Solids (g/m ² /month)	Ash Fraction (g/m ² /month)	% Ash Fraction
1	Hillside Crescent	4.0	1.7	0.1	6
8	Rodgers Street	4.0	0.2	0.1	50
9	Rhondda Road	4.0	0.3	0.2	67
11	Myrtle Street	4.0	0.5	0.3	60
23	York Street	4.0	0.6	0.2	33

Comments

No exceedances of the approved criteria were detected during the sample period. It is noted that the Ash Fraction (g/m²/month) value for Hillside Crescent has been adjusted from <0.1 to allow for statistical analysis.

Deposited Dust - Year to Date

	Rhondda Road			Myrtle Street			Hillside Crescent			Rodgers Street			York Street		
	Total Insoluble Solids	Ash Fraction	% Ash	Total Insoluble Solids	Ash Fraction	% Ash	Total Insoluble Solids	Ash Fraction	% Ash	Total Insoluble Solids	Ash Fraction	% Ash	Total Insoluble Solids	Ash Fraction	% Ash
Units	g/m ² /month	g/m ² /month		g/m ² /month	g/m ² /month		g/m ² /month	g/m ² /month		g/m ² /month	g/m ² /month		g/m ² /month	g/m ² /month	
EPA Approved Level	4.0			4.0			4.0			4.0			4.0		
January	0.3	0.2	67	0.5	0.3	60	1.7	0.1	6	0.2	0.1	50	0.6	0.2	33
February															
March															
April															
May															
June															
July															
August															
September															
October															
November															
December															
Annual Average	0.3	0.2	67	0.5	0.3	60	1.7	0.1	6	0.2	0.1	50	0.6	0.2	33
Annual Maximum	0.3	0.2	67	0.5	0.3	60	1.7	0.1	6	0.2	0.1	50	0.6	0.2	33
Annual Minimum	0.3	0.2	67	0.5	0.3	60	1.7	0.1	6	0.2	0.1	50	0.6	0.2	33

Particulate Matter (PM₁₀)

Sample Location: EPA 3 - Rodgers Street
Sample Frequency: 6 days

Date Sample Taken (24-hr)	Collected by	Date Results Received	PM ₁₀ µg/m ³	Monthly Average Criteria (µg/m ³)	Annual Average Criteria (µg/m ³)
06/01/2024	CBased - TD	16/01/2024	12.7	50	
12/01/2024	CBased - TD	24/01/2024	14.5	50	
18/01/2024	CBased - TD	1/02/2024	8.1	50	
24/01/2024	CBased - TD	1/02/2024	20.0	50	
30/01/2024	CBased - TD	07/02/2024	24.4	50	
Monthly Average			15.9		25/30*

*Project Approval (PA 10_0183) outlines the annual average PM₁₀ criteria to be 30µg/m³. However, EPL 536 Condition R4.5a) requires that the air quality monitoring data is assessed against the Air Impact Assessment Criteria outlined in EPA's *Approved Methods for the Modelling and Assessment of Air Pollutants in NSW*. The most up to date version of this guideline was published in 2022 and outlines the annual average PM₁₀ criteria to be 25µg/m³. Metromix has considered both criteria for its review of particulate matter monitoring.

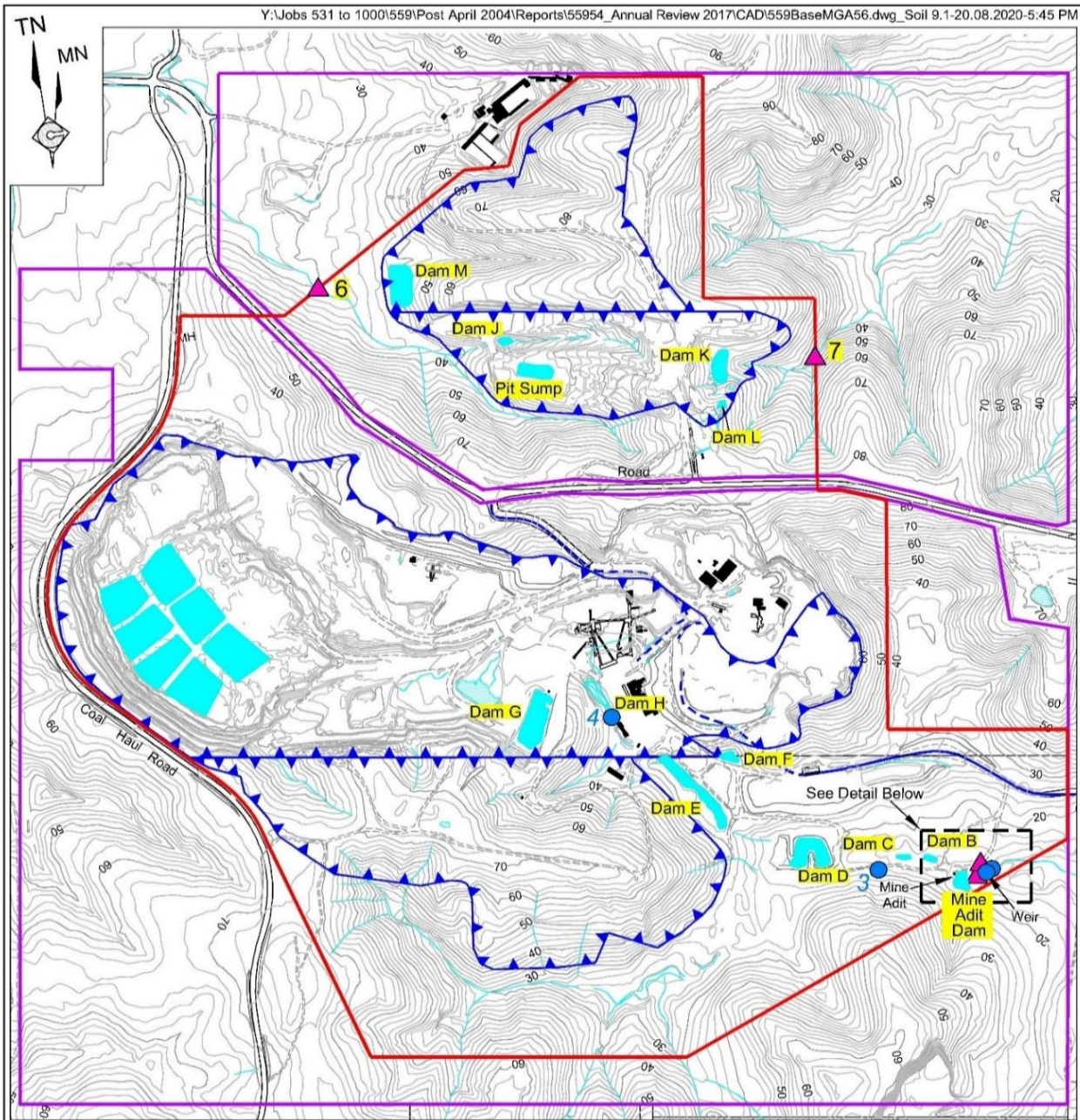
Comments

All PM₁₀ results remained below the approved criteria for the sample period.

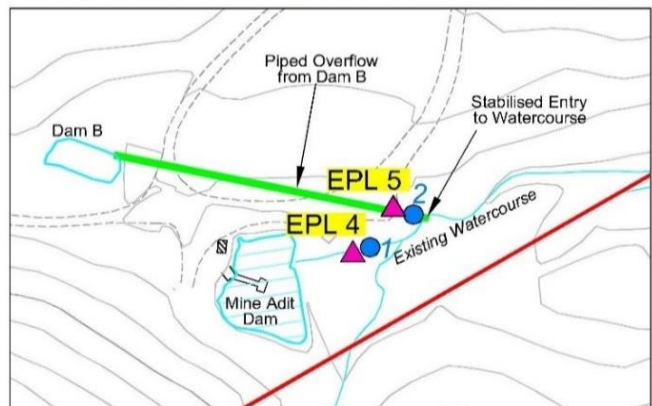
Particulate Matter (PM₁₀) - Year to Date

Date	PM ₁₀ (µg/m ³)	Monthly Average (µg/m ³)	Year to Date Average (µg/m ³)	24-Hr Criteria (µg/m ³)	Comments
06/01/2024	12.7	15.9	12.7	50	
12/01/2024	14.5		13.6	50	
18/01/2024	8.1		11.8	50	
24/01/2024	20.0		13.8	50	
30/01/2024	24.4		15.9	50	

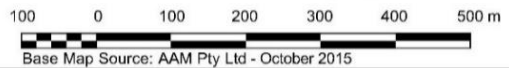
Minimum	8.1
Maximum	24.4
Average	15.9
Standard Deviation	6.4
24-hr Criteria	50
Number of Exceedences	0
Annual Average Criteria	25/30*
Annual Average Criteria Exceeded	No
*See explanation on previous page.	



- REFERENCE**
- Property Boundary
 - Quarry Site Boundary
 - ▬▬▬ Extraction Area
 - Dam C Dam (and reference)
 - - - Access Road to Public Road Network
 - Contour (m AHD)(Interval =1m)
 - Drainage Line
 - Sealed Road
 - - - Unsealed Road / Track
 - ▲ 4 EPL Licensed Monitoring Location
 - 1 Flowmeter



SCALE 1:10 000 (A4)



Base Map Source: AAM Pty Ltd - October 2015

WATER MONITORING

Water**Water Monitoring****EPL Point 4 - Monthly Monitoring**

Date	Time	Sampled By	Date Results Received		pH	EC	TSS	Oil & Grease	Comments
				Units	pH Units	µS/cm	mg/L	mg/L	
				EPL Criterion*	6.5-8.5	NA	<50	10	
				ANZECC Water Quality Limits	6.5-8.5	125-2200	<50	-	
02/01/2024	8:00am	Metromix - JJ	10/01/2024		7.3	1920	<5	<5	

EPL Point 5 - Monitoring Daily During Discharge

Date	Time	Sampled By	Date Results Received		pH	EC	TSS	Oil & Grease	Comments
				Units	pH Units	µS/cm	mg/L	mg/L	
				EPL Criterion*	6.5-8.5	NA	<50	10	
				ANZECC Water Quality Limits	6.5-8.5	125-2200	<50	-	
No discharge occurred at this location and therefore no monitoring was required									

EPL Point 6 - Monthly Monitoring

Date	Time	Sampled By	Date Results Received		pH	EC	TSS	Oil & Grease	Comments
				Units	pH Units	µS/cm	mg/L	mg/L	
				EPL Criterion*	6.5-8.5	NA	<50	10	
				ANZECC Water Quality Limits	6.5-8.5	125-2200	<50	-	
No discharge occurred at this location and therefore no monitoring was required									

EPL Point 7 - Monthly Monitoring

Date	Time	Sampled By	Date Results Received		pH	EC	TSS	Oil & Grease	Comments
				Units	pH Units	µS/cm	mg/L	mg/L	
				EPL Criterion*	6.5-8.5	NA	<50	10	
				ANZECC Water Quality Limits	6.5-8.5	125-2200	<50	-	
No discharge occurred at this location and therefore no monitoring was required									

Flow Meter Records

EPA Identified Point	Location	Description	Sample Period	Daily Average Flow ML	Monthly Total Flow ML
4	Adit Dam	Adit Dam to Creek (off site)	02/01/2024 - 01/02/2024	0.01	0.4
5	Dam B	Discharge from Dam B (from Quarry)	02/01/2024 - 01/02/2024	0.02	0.5
4	Adit Dam	Water pumped from Adit Dam to Dam G (processing use)	02/01/2024 - 01/02/2024	0.39	11.6

Comments

All water monitoring results remained within the approved criteria levels during the monitoring period.

Water - Year to Date**EPL Point 4 : Monthly Monitoring**

	pH	EC	TSS	Oil & Grease	Comments
Units	pH Units	µS/cm	mg/L	mg/L	-
EPL Criterion*	6.5-8.5	NA	<50	10	-
ANZECC Water Quality Limits	6.5-8.5	125-2200	<50	-	-
January	7.3	2090	<5	6	-
February					-
March					-
April					-
May					-
June					-
July					-
August					-
September					-
October					-
November					-
December					-

EPL Point 5 : Monitoring During Discharge

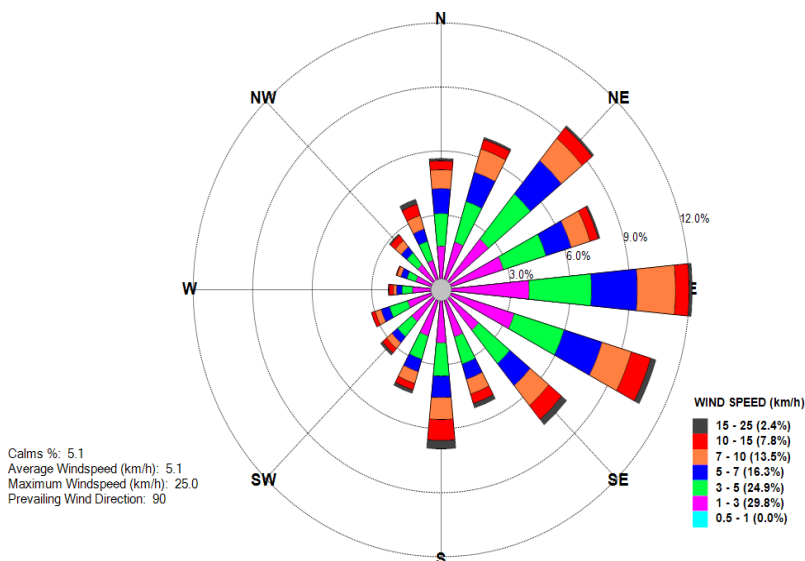
	pH	EC	TSS	Oil & Grease	Comments
Units	pH Units	µS/cm	mg/L	mg/L	-
EPL Criterion*	6.5-8.5	NA	<50	10	-
ANZECC Water Quality Limits	6.5-8.5	125-2200	<50	-	-
No discharge occurred at this location and therefore no monitoring was required.					

Meteorological Conditions

Monitoring Location: Mid-Pit Entrance
Monitoring Frequency: Continuous

Windrose

Metromix Teralba - Windrose
JANUARY 2024



Monthly Summary

Date	Mean Wind Direction (°)	Mean Wind Speed (km/h)	Daily Rainfall (mm)	Mean Sigma Theta	Max Temperature (°C) at 2m	Min Temperature (°C) at 2m
01/01/24	83	5.2	0.0	33.3	26.0	20.6
02/01/24	97	5.5	0.0	29.2	30.0	18.6
03/01/24	86	4.2	0.0	30.5	30.6	19.0
04/01/24	187	5.1	2.4	33.6	30.2	19.6
05/01/24	161	6.5	7.4	41.3	26.2	18.2
06/01/24	159	4.6	0.0	38.6	27.2	17.0
07/01/24	102	5.8	0.0	28.6	30.0	17.2
08/01/24	170	5.7	0.6	28.6	28.8	20.0
09/01/24	178	6.1	0.8	36.2	27.8	21.5
10/01/24	145	3.4	0.0	38.7	30.4	21.4
11/01/24	147	4.7	0.0	35.7	31.8	22.1
12/01/24	96	4.9	0.0	31.7	31.4	21.6
13/01/24	120	4.3	0.0	32.5	33.4	20.2
14/01/24	160	4.3	5.8	37.3	26.8	20.2
15/01/24	112	7.1	2.0	31.0	24.0	20.4
16/01/24	109	4.2	0.6	30.4	25.8	18.8
17/01/24	106	4.7	9.6	31.5	32.0	20.8
18/01/24	218	5.2	0.2	38.4	34.6	21.6
19/01/24	176	5.0	0.0	31.7	30.4	18.0
20/01/24	87	4.9	0.0	28.6	29.6	20.4
21/01/24	181	4.6	0.0	30.1	40.0	19.2
22/01/24	170	8.6	0.4	39.4	27.6	19.7
23/01/24	136	3.9	2.4	33.6	27.6	18.1
24/01/24	126	4.7	0.0	27.7	35.2	17.6
25/01/24	194	5.9	0.0	35.0	42.2	25.0
26/01/24	202	9.6	0.0	32.9	40.4	22.4
27/01/24	113	3.9	0.0	35.8	25.0	21.0
28/01/24	162	3.9	0.0	32.3	27.6	20.4
29/01/24	101	4.4	0.0	29.5	34.4	20.4
30/01/24	129	4.8	0.0	35.5	31.8	22.8
31/01/24	164	4.7	0.8	33.4	30.2	21.4

Meteorological Conditions - Year to Date

Monitored Parameter	Jan	Feb	Mar	Apr	May	Jun	Jul	Aug	Sep	Oct	Nov	Dec	Annual
Total Rainfall (mm)	33.0												33.0
Average Minimum Temperature (°C) at 2m	17.0												17.0
Average Maximum Temperature (°C) at 2m	42.2												42.2
Average Minimum Temperature (°C) at 10m	17.4												17.4
Average Maximum Temperature (°C) at 10m	41.0												41.0
Average Sigma Theta	33.3												33.3
Average Solar Radiation (W/m ²)	192.0												192.0
Average Relative Humidity (%)	70.0												70.0

Blasting

Monitoring Frequency Each Blast

Blast Monitoring Completed By MAXAM

Shot #	Day	Month	Time	Location	Location 1		Location 2		Location 3		Comments
					Overpressure	Vibration	Overpressure	Vibration	Overpressure	Vibration	
					dB(L)	mm/s	dB(L)	mm/s	dB(L)	mm/s	
1	10	January	13:14:00	Stage 2B-1	103.3	0.17	102.7	0.08	NM	NM	
2	19	January	11:52:39	Stage 2B-2	96.3	0.33	99.9	0.06	NM	NM	
3	29	January	11:51:27	Stage 2B	90.9	0.32	96.7	0.09	NM	NM	

NT Not Triggered

NM Not Monitored

Blasting Criteria

Parameter	Units of Measure	Limit	
		95% of blasts per year	100% of blasts
Airblast Overpressure (Linear Peak)	decibels (dB(L))	115	120
Ground Vibration (Peak Particle Velocity)	millimeters per second	5	10

Comments

Three blasting events occurred during the monitoring period. All blast monitoring results were within the approved criteria.

Waste Management

Waste Removal Summary

Month	January	February	March	April	May	June	July	August	September	October	November	December
Items	Quantity	Quantity	Quantity	Quantity	Quantity	Quantity	Quantity	Quantity	Quantity	Quantity	Quantity	Quantity
General Waste Bin (10m ³)	-											
General Waste Bin (4.5m ³)	-											
General Waste Bin (6m ³)	-											
General Waste Bin (20m ³)	1											
Paper & Cardboard Bin (3m ³)	2											
Shredded Paper Bin (240L)	-											
Co Mingled Recycling (2 x 240 L)	2											
Tonner Cartridges	-											
Waste Oil (L)	-											
Scrap Steel (t)	-											
Timber (m ³)	-											
Engine Coolant (L)	-											
Oil Filters (240L bin)	-											
Batteries	-											
Oily Rags (240L bin)	-											
Aerosols (120L bin)	-											
Tyres	-											
Other	-											
Oily Water (L)	-											
Grease Waste (L)	-											