



# Marrangaroo Quarry

## Environmental Monitoring - Deposited Dust

<b>Environmental Protection Licence (EPL):</b>	1464
<b>Licensee:</b>	Metromix Pty Limited
<b>Licensee Address:</b>	PO Box 1295 Parramatta, NSW 2124
<b>Premises:</b>	Metromix Pty Limited Marrangaroo Quarry Oakey Forest Road Marrangaroo, NSW 2790
<b>Licensee Website:</b>	<a href="https://www.metromix.com.au/">https://www.metromix.com.au/</a>
<b>Licensee Website - Monitoring Results:</b>	<a href="https://www.metromix.com.au/resources/#quarry">https://www.metromix.com.au/resources/#quarry</a>
<b>EPA Public Register:</b>	<a href="https://www.epa.nsw.gov.au/licensing-and-regulation/public-registers">https://www.epa.nsw.gov.au/licensing-and-regulation/public-registers</a>
<b>Date of Publication:</b>	15/04/2024
<b>Originator:</b>	Daniel Lythgo

# EPL 1464 - Monitoring Requirements - Deposited Dust

## Monitoring Points - Air

EPL Condition	EPA Identification Number	Site ID	Type of Monitoring Point	Type of Discharge Point	Location Description*
P1.1	Point 2	MD-2	Dust monitoring	N/A	Dust Deposition Gauge identified as MD-2 on Figure 3.2 and titled "Environmental Monitoring Locations" as
	Point 3	MD-3	Dust monitoring	N/A	Dust Deposition Gauge identified as MD-2 on Figure 3.2 and titled "Environmental Monitoring Locations" as
	Point 4	MD-4	Dust monitoring	N/A	Dust Deposition Gauge identified as MD-2 on Figure 3.2 and titled "Environmental Monitoring Locations" as contained within the 2014 Annual Environmental Management Report

\*See points 'MD-2', 'MD-3' and 'MD-4' in 'Monitoring Map' tab.

## Monitoring Requirements

EPL Condition	EPA Identification Number	Site ID	Pollutant	Units of Measure	Monitoring Frequency	Sampling Method
M2.2	Point 2	MD-2	Particulates - Deposited Matter	Grams per square metre per month	Monthly	Australian Standard 3580.10.1-2003
	Point 3	MD-3	Particulates - Deposited Matter	Grams per square metre per month	Monthly	Australian Standard 3580.10.1-2003
	Point 4	MD-4	Particulates - Deposited Matter	Grams per square metre per month	Monthly	Australian Standard 3580.10.1-2003

## Guideline

Source	Pollutant	Unit of Measure	Guideline Value	
EPA Annual Average Guideline**	Total Insoluble Matter	Grams per square metre per month (g/m <sup>2</sup> /month)	Measurement Period	Value
			Annual Average	4

\*\* <https://www.epa.nsw.gov.au/-/media/epa/corporate-site/resources/air/approved-methods-for-modelling-and-assessment-of-air-pollutants-in-nsw-160666.pdf>

# Monitoring Location Map - Deposited Dust

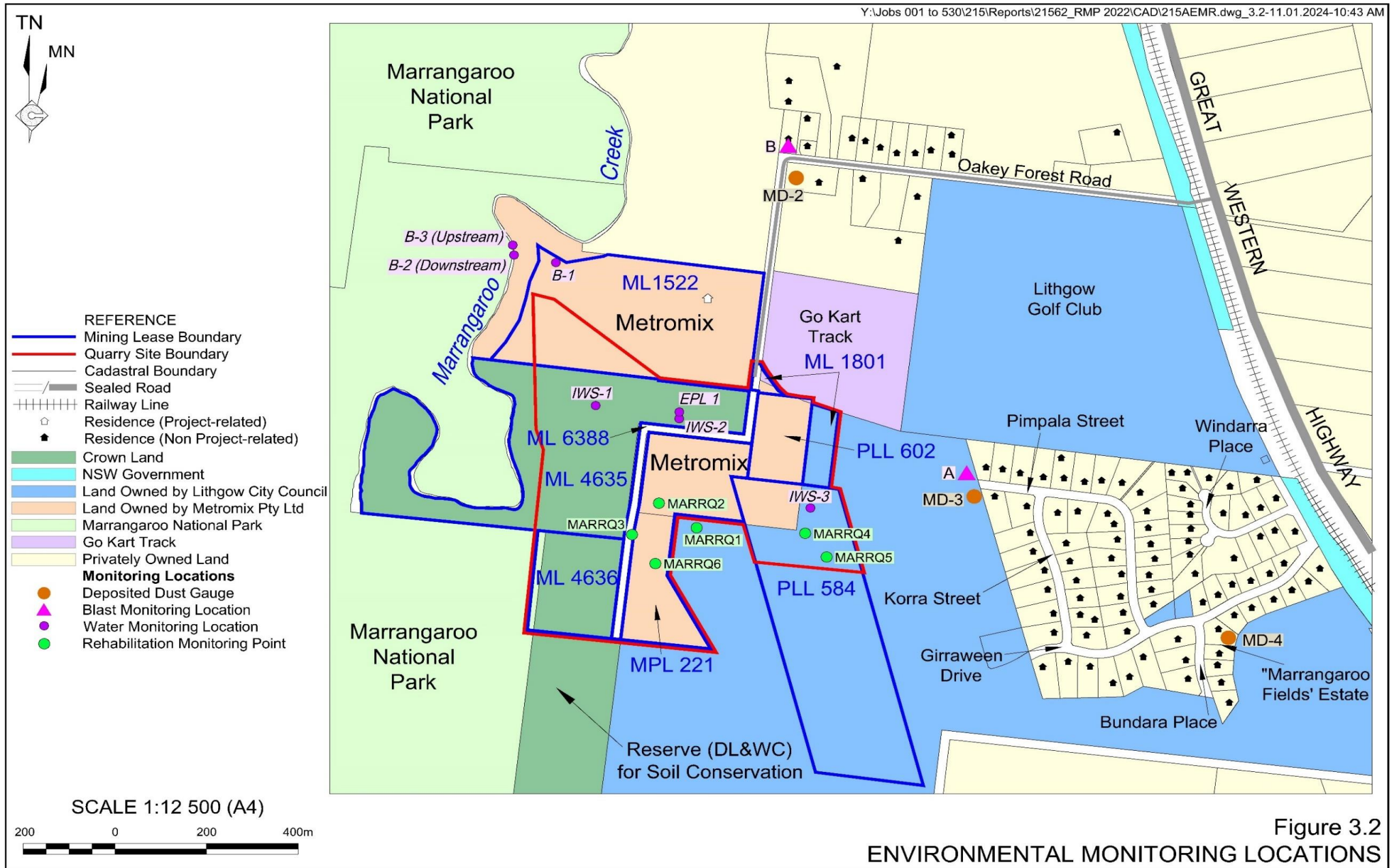


Figure 3.2  
ENVIRONMENTAL MONITORING LOCATIONS

# Monitoring Results - Deposited Dust

- Note 1:** Recording of time of sample collection did not commence until August 2020.  
**Note 2:** Red text indicates an exceedance of the relevant guideline concentration limit.  
**Note 3:** NC = sample or data not collected.  
**Note 4:** N/A = result or field not applicable.

Sampler	Sample Details						EPL Point 2			EPL Point 3			EPL Point 4				
	Time of Sample Collection			Date Results Received	Monitoring Frequency	Sampling Period			MD-2			MD-3			MD-4		
	EPL Point 2	EPL Point 3	EPL Point 4						Insoluble Matter	Rolling Annual Average	Ash Content	Insoluble Matter	Rolling Annual Average	Ash Content	Insoluble Matter	Rolling Annual Average	Ash Content
	MD-2	MD-3	MD-4	(g/m2/month)	(g/m2/month)	(g/m2/month)	(g/m2/month)	(g/m2/month)	(g/m2/month)	(g/m2/month)	(g/m2/month)	(g/m2/month)					
	EPA Annual Average Guideline						4.0 (Annual Average)	4.0 (Annual Average)	N/A	4.0 (Annual Average)	4.0 (Annual Average)	N/A	4.0 (Annual Average)	4.0 (Annual Average)	N/A		
NC	NC	NC	NC	05/May/11	Monthly	18/Jan/11	to	25/Feb/11	0.1	N/A	0.1	0.2	N/A	0.1	0.1	N/A	0.1
NC	NC	NC	NC	05/May/11	Monthly	25/Feb/11	to	31/Mar/11	2.2	N/A	1.7	4.0	N/A	2.9	1.4	N/A	0.6
NC	NC	NC	NC	24/May/11	Monthly	31/Mar/11	to	05/May/11	0.4	N/A	0.2	0.4	N/A	0.2	0.6	N/A	0.3
NC	NC	NC	NC	22/Jun/11	Monthly	05/May/11	to	06/Jun/11	0.4	N/A	0.2	0.6	N/A	0.4	0.5	N/A	0.3
NC	NC	NC	NC	21/Sep/11	Monthly	06/Jun/11	to	25/Aug/11	1.1	N/A	0.7	1.4	N/A	1.0	0.8	N/A	0.5
NC	NC	NC	NC	19/Oct/11	Monthly	25/Aug/11	to	05/Sep/11	0.6	N/A	0.4	1.1	N/A	0.8	1.2	N/A	0.8
NC	NC	NC	NC	14/Nov/11	Monthly	05/Oct/11	to	01/Nov/11	0.4	N/A	0.3	0.6	N/A	0.3	0.4	N/A	0.4
NC	NC	NC	NC	11/Jan/12	Monthly	01/Nov/11	to	02/Dec/11	0.9	N/A	0.5	0.7	N/A	0.5	0.5	N/A	0.4
NC	NC	NC	NC	11/Jan/12	Monthly	02/Dec/11	to	22/Dec/11	11.4	N/A	10.1	1.4	N/A	1.0	0.7	N/A	0.6
NC	NC	NC	NC	14/Feb/12	Monthly	22/Dec/11	to	31/Jan/12	2.5	2.0	2.0	0.7	1.1	0.6	0.4	0.7	0.3
NC	NC	NC	NC	14/Mar/12	Monthly	31/Jan/12	to	02/Mar/12	1.5	2.0	0.8	0.4	1.0	0.3	0.3	0.6	0.3
NC	NC	NC	NC	25/Apr/12	Monthly	02/Mar/12	to	02/Apr/12	1.2	2.1	0.6	0.3	1.1	0.3	0.9	0.7	0.5
NC	NC	NC	NC	17/May/12	Monthly	02/Apr/12	to	01/May/12	0.2	1.9	0.2	0.2	0.7	0.2	0.4	0.6	0.3
NC	NC	NC	NC	18/Jun/12	Monthly	01/May/12	to	31/May/12	0.8	1.9	0.6	0.4	0.7	0.2	0.7	0.6	0.6
NC	NC	NC	NC	16/Jul/12	Monthly	31/May/12	to	02/Jul/12	0.7	1.9	0.3	0.6	0.7	0.3	0.5	0.6	0.3
NC	NC	NC	NC	18/Aug/12	Monthly	02/Jul/12	to	02/Aug/12	0.2	1.8	0.2	0.4	0.7	0.3	0.4	0.6	0.3
NC	NC	NC	NC	14/Sep/12	Monthly	02/Aug/12	to	03/Sep/12	0.4	1.7	0.3	1.3	0.7	0.8	1.2	0.6	0.8
NC	NC	NC	NC	17/Oct/12	Monthly	03/Sep/12	to	02/Oct/12	1.3	1.8		1.0	0.7	0.9	2.0	0.7	1.2
NC	NC	NC	NC	15/Nov/12	Monthly	02/Oct/12	to	01/Nov/12	0.5	1.8	0.3	1.4	0.7	1.2	0.8	0.7	0.6
NC	NC	NC	NC	19/Dec/12	Monthly	01/Nov/12	to	03/Dec/12	1.7	1.9	0.9	2.2	0.9	1.4	1.2	0.8	0.7
NC	NC	NC	NC	22/Jan/13	Monthly	03/Dec/12	to	03/Jan/13	1.0	1.0	0.7	2.0	0.9	1.4	0.7	0.8	0.5
NC	NC	NC	NC	15/Feb/13	Monthly	03/Jan/13	to	31/Jan/13	1.7	0.9	0.8	1.2	1.0	0.9	1.3	0.9	1.0
NC	NC	NC	NC	19/Mar/13	Monthly	31/Jan/13	to	05/Mar/13	6.7	1.4	3.4	2.6	1.1	2.1	0.6	0.9	0.4
NC	NC	NC	NC	10/Apr/13	Monthly	05/Mar/13	to	02/Apr/13	0.5	1.3	0.4	0.3	1.1	0.2	0.3	0.8	0.2
NC	NC	NC	NC	17/May/13	Monthly	02/Apr/13	to	08/May/13	0.4	1.3	0.4	0.2	1.1	0.2	0.3	0.8	0.2
NC	NC	NC	NC	18/Jun/13	Monthly	08/May/13	to	04/Jun/13	0.8	1.3	0.6	0.4	1.1	0.4	0.6	0.8	0.4
NC	NC	NC	NC	12/Jul/13	Monthly	04/Jun/13	to	01/Jul/13	0.9	1.3	0.5	0.6	1.1	0.3	0.7	0.8	0.3
NC	NC	NC	NC	14/Aug/13	Monthly	01/Jul/13	to	02/Aug/13	1.2	1.4	0.9	0.4	1.1	0.3	0.7	0.9	0.3

Sample Details									EPL Point 2			EPL Point 3			EPL Point 4		
Sampler	Time of Sample Collection			Date Results Received	Monitoring Frequency	Sampling Period			MD-2			MD-3			MD-4		
	EPL Point 2	EPL Point 3	EPL Point 4						Insoluble Matter	Rolling Annual Average	Ash Content	Insoluble Matter	Rolling Annual Average	Ash Content	Insoluble Matter	Rolling Annual Average	Ash Content
	MD-2	MD-3	MD-4			(g/m2/month)	(g/m2/month)	(g/m2/month)	(g/m2/month)	(g/m2/month)	(g/m2/month)	(g/m2/month)	(g/m2/month)	(g/m2/month)			
	EPA Annual Average Guideline					4.0 (Annual Average)	4.0 (Annual Average)	N/A	4.0 (Annual Average)	4.0 (Annual Average)	N/A	4.0 (Annual Average)	4.0 (Annual Average)	N/A			
NC	NC	NC	NC	13/Sep/13	Monthly	02/Aug/13	to	04/Sep/13	3.2	1.7	2.8	0.5	1.1	0.5	0.7	0.8	0.5
NC	NC	NC	NC	14/Oct/13	Monthly	04/Sep/13	to	01/Oct/13	1.5	1.7	1.3	1.0	1.1	0.8	1.1	0.8	0.6
NC	NC	NC	NC	20/Nov/13	Monthly	01/Oct/13	to	05/Nov/13	1.1	1.7	1.0	1.2	1.1	1.0	1.5	0.8	1.2
NC	NC	NC	NC	16/Dec/13	Monthly	05/Nov/13	to	02/Dec/13	1.4	1.7	0.9	0.9	0.9	0.6	1.6	0.8	0.9
NC	NC	NC	NC	23/Jan/14	Monthly	02/Dec/13	to	06/Jan/14	0.6	1.7	0.3	1.1	0.9	0.6	1.1	0.9	0.8
NC	NC	NC	NC	12/Feb/14	Monthly	06/Jan/14	to	03/Feb/14	0.2	1.5	0.2	0.3	0.8	0.3	1.2	0.9	0.7
NC	NC	NC	NC	21/Mar/14	Monthly	03/Feb/14	to	05/Mar/14	1.0	1.1	0.4	1.2	0.7	0.6	1.0	0.9	0.5
NC	NC	NC	NC	16/Apr/14	Monthly	05/Mar/14	to	02/Apr/14	0.8	1.1	0.5	0.8	0.7	0.5	0.7	0.9	0.4
NC	NC	NC	NC	23/May/14	Monthly	02/Apr/14	to	02/May/14	0.5	1.1	0.3	0.4	0.7	0.3	0.5	1.0	0.3
NC	NC	NC	NC	15/Jul/14	Monthly	02/May/14	to	02/Jun/14	0.4	1.1	0.2	0.4	0.7	0.2	0.5	0.9	0.3
NC	NC	NC	NC	15/Jul/14	Monthly	02/Jun/14	to	01/Jul/14	0.3	1.0	0.3	0.6	0.7	0.6	0.6	0.9	0.3
NC	NC	NC	NC	11/Aug/14	Monthly	01/Jul/14	to	07/Aug/14	2.6	1.1	2.2	0.4	0.7	0.3	0.1	0.9	0.1
NC	NC	NC	NC	08/Sep/14	Monthly	07/Aug/14	to	02/Sep/14	2.4	1.1	2.1	1.3	0.8	1.0	0.3	0.9	0.1
NC	NC	NC	NC	08/Oct/14	Monthly	02/Sep/14	to	01/Oct/14	0.2	1.0	0.1	1.2	0.8	0.5	0.4	0.8	0.2
NC	NC	NC	NC	07/Nov/19	Monthly	01/Oct/14	to	03/Nov/14	1.1	1.0	0.4	2.4	0.9	1.0	0.6	0.7	0.2
NC	NC	NC	NC	09/Dec/14	Monthly	03/Nov/14	to	02/Dec/14	0.8	0.9	0.4	1.2	0.9	0.8	1.4	0.7	0.7
NC	NC	NC	NC	20/Jan/15	Monthly	02/Dec/14	to	05/Jan/15	0.8	0.9	0.2	1.3	1.0	0.6	2.8	0.8	1.1
NC	NC	NC	NC	11/Feb/15	Monthly	05/Jan/15	to	02/Feb/15	1.3	1.0	0.1	0.1	0.9	0.1	0.4	0.8	0.1
NC	NC	NC	NC	11/Mar/15	Monthly	02/Feb/15	to	02/Mar/15	1.1	1.0	0.6	0.7	0.9	0.4	0.8	0.8	0.4
NC	NC	NC	NC	13/Apr/15	Monthly	02/Mar/15	to	01/Apr/15	0.2	1.0	0.1	0.2	0.9	0.1	0.3	0.7	0.1
NC	NC	NC	NC	05/May/15	Monthly	01/Apr/15	to	01/May/15	0.9	1.0	0.3	1.1	0.9	0.3	0.1	0.7	0.1
NC	NC	NC	NC	05/Jun/15	Monthly	01/May/15	to	01/Jun/15	0.5	1.0	0.4	1.0	1.0	0.3	0.1	0.7	0.1
NC	NC	NC	NC	22/Jul/15	Monthly	01/Jun/15	to	18/Jul/15	0.8	1.1	0.5	0.8	1.0	0.1	0.8	0.7	0.3
NC	NC	NC	NC	07/Aug/15	Monthly	18/Jul/15	to	03/Aug/15	0.7	0.9	0.4	0.1	1.0	0.1	0.1	0.7	0.1
NC	NC	NC	NC	07/Sep/15	Monthly	03/Aug/15	to	01/Sep/15	0.8	0.8	0.5	0.8	0.9	0.4	0.3	0.7	0.1
NC	NC	NC	NC	08/Oct/15	Monthly	01/Sep/15	to	07/Oct/15	0.4	0.8	0.1	0.1	0.8	0.0	0.1	0.7	0.1
NC	NC	NC	NC	06/Nov/15	Monthly	07/Oct/15	to	04/Nov/15	3.8	1.0	3.0	1.5	0.7	0.8	2.0	0.8	0.7
NC	NC	NC	NC	08/Dec/15	Monthly	04/Nov/15	to	04/Dec/15	0.2	1.0	0.1	1.7	0.8	0.7	0.1	0.7	0.1
NC	NC	NC	NC	11/Jan/16	Monthly	04/Dec/15	to	05/Jan/16	1.1	1.0	0.5	2.1	0.9	0.8	0.1	0.4	0.1
NC	NC	NC	NC	09/Feb/16	Monthly	05/Jan/16	to	01/Feb/16	1.4	1.0	0.6	0.6	0.9	0.2	2.0	0.6	0.5
Daniel Lythgo	NC	NC	NC	07/Mar/16	Monthly	01/Feb/16	to	03/Mar/16	0.5	0.9	0.2	0.4	0.9	0.2	1.4	0.6	0.6
Daniel Lythgo	NC	NC	NC	05/Apr/16	Monthly	03/Mar/16	to	01/Apr/16	1.1	1.0	0.7	0.4	0.9	0.2	1.8	0.7	0.9
Daniel Lythgo	NC	NC	NC	05/May/16	Monthly	01/Apr/16	to	01/May/16	0.1	1.0	0.1	0.2	0.8	0.1	0.9	0.8	0.5
Daniel Lythgo	NC	NC	NC	02/Jun/16	Monthly	01/May/16	to	31/May/16	0.1	0.9	0.1	0.2	0.7	0.2	0.9	0.9	0.6
Daniel Lythgo	NC	NC	NC	08/Jul/16	Monthly	31/May/16	to	30/Jun/16	2.1	1.0	1.2	ND	0.7	ND	ND	0.9	ND
Daniel Lythgo	NC	NC	NC	04/Aug/16	Monthly	30/Jun/16	to	01/Aug/16	2.5	1.2	1.9	2.0	0.9	1.4	0.7	0.9	0.4
Daniel Lythgo	NC	NC	NC	09/Sep/16	Monthly	01/Aug/16	to	01/Sep/16	1.7	1.3	1.3	0.1	0.8	0.1	0.5	1.0	0.2
Daniel Lythgo	NC	NC	NC	18/Oct/16	Monthly	01/Sep/16	to	04/Oct/16	2.0	1.4	0.3	0.2	0.9	0.1	1.0	1.0	0.2
Daniel Lythgo	NC	NC	NC	08/Nov/16	Monthly	04/Oct/16	to	02/Nov/16	0.1	1.1	0.1	0.9	0.8	0.6	0.1	0.9	0.1

Sample Details									EPL Point 2			EPL Point 3			EPL Point 4		
Sampler	Time of Sample Collection			Date Results Received	Monitoring Frequency	Sampling Period			MD-2			MD-3			MD-4		
	EPL Point 2	EPL Point 3	EPL Point 4						Insoluble Matter	Rolling Annual Average	Ash Content	Insoluble Matter	Rolling Annual Average	Ash Content	Insoluble Matter	Rolling Annual Average	Ash Content
	MD-2	MD-3	MD-4			(g/m2/month)	(g/m2/month)	(g/m2/month)	(g/m2/month)	(g/m2/month)	(g/m2/month)	(g/m2/month)	(g/m2/month)	(g/m2/month)			
	EPA Annual Average Guideline					4.0 (Annual Average)	4.0 (Annual Average)	N/A	4.0 (Annual Average)	4.0 (Annual Average)	N/A	4.0 (Annual Average)	4.0 (Annual Average)	N/A			
Daniel Lythgo	NC	NC	NC	12/Dec/16	Monthly	02/Nov/16	to	05/Dec/16	0.4	1.1	0.1	2.6	0.9	1.9	0.1	0.9	0.1
Daniel Lythgo	NC	NC	NC	16/Jan/17	Monthly	05/Dec/16	to	10/Jan/17	0.6	1.1	0.3	0.6	0.7	0.4	0.4	0.9	0.1
Daniel Lythgo	NC	NC	NC	14/Feb/17	Monthly	10/Jan/17	to	03/Feb/17	0.4	1.0	0.1	0.8	0.8	0.4	0.7	0.8	0.5
Daniel Lythgo	NC	NC	NC	09/Mar/17	Monthly	03/Feb/17	to	03/Mar/17	0.1	0.9	0.1	0.3	0.8	0.1	0.7	0.7	0.3
Daniel Lythgo	NC	NC	NC	07/Apr/17	Monthly	03/Feb/17	to	04/Apr/17	1.0	0.9	0.7	0.1	0.7	0.1	0.1	0.6	0.1
Daniel Lythgo	NC	NC	NC	11/May/17	Monthly	04/Apr/17	to	02/May/17	0.4	1.0	0.2	0.8	0.8	0.5	0.7	0.5	0.4
Daniel Lythgo	NC	NC	NC	08/Jun/17	Monthly	02/May/17	to	02/Jun/17	0.1	1.0	0.0	0.3	0.8	0.2	0.3	0.5	0.2
Daniel Lythgo	NC	NC	NC	05/Jul/17	Monthly	02/Jun/17	to	29/Jun/17	0.2	0.8	0.1	0.6	0.8	0.4	0.2	0.5	0.1
Daniel Lythgo	NC	NC	NC	09/Aug/17	Monthly	29/Jun/17	to	02/Aug/17	0.4	0.6	0.2	0.9	0.7	0.7	0.7	0.5	0.5
Daniel Lythgo	NC	NC	NC	05/Sep/17	Monthly	02/Aug/17	to	31/Aug/17	0.8	0.5	0.3	1.1	0.8	0.9	1.0	0.5	0.5
Daniel Lythgo	NC	NC	NC	11/Oct/17	Monthly	31/Aug/17	to	04/Oct/17	0.4	0.4	0.2	0.9	0.8	0.8	1.4	0.5	1.0
Daniel Lythgo	NC	NC	NC	13/Nov/17	Monthly	04/Oct/17	to	02/Nov/17	0.4	0.4	0.1	0.9	0.8	0.7	3.1	0.8	1.2
Daniel Lythgo	NC	NC	NC	15/Dec/17	Monthly	02/Nov/17	to	04/Dec/17	0.2	0.4	0.1	0.5	0.7	0.3	1.1	0.9	0.4
Daniel Lythgo	NC	NC	NC	05/Mar/18	Monthly	04/Dec/17	to	17/Jan/18	0.7	0.4	0.4	0.8	0.7	0.5	2.5	1.0	1.5
Daniel Lythgo	NC	NC	NC	15/Mar/18	Monthly	17/Jan/18	to	21/Feb/18	0.7	0.5	0.4	0.9	0.7	0.7	0.8	1.1	0.5
Daniel Lythgo	NC	NC	NC	23/Mar/18	Monthly	21/Feb/18	to	08/Mar/18	1.0	0.5	0.9	0.7	0.7	0.6	0.7	1.1	0.6
Daniel Lythgo	NC	NC	NC	18/Apr/18	Monthly	08/Mar/18	to	16/Apr/18	2.0	0.6	1.6	0.5	0.7	0.4	0.6	1.1	0.6
Daniel Lythgo	NC	NC	NC	14/May/18	Monthly	16/Apr/18	to	03/May/18	1.0	0.7	0.6	1.2	0.8	0.9	1.1	1.1	0.7
Daniel Lythgo	NC	NC	NC	18/Jun/18	Monthly	03/May/18	to	12/Jun/18	0.4	0.7	0.1	0.4	0.8	0.2	0.4	1.1	0.1
Daniel Lythgo	NC	NC	NC	09/Jul/18	Monthly	12/Jun/18	to	05/Jul/18	2.3	0.9	1.9	0.6	0.8	0.3	0.7	1.2	0.2
Daniel Lythgo	NC	NC	NC	13/Aug/18	Monthly	05/Jul/18	to	03/Aug/18	1.1	0.9	0.9	0.6	0.8	0.5	0.8	1.2	0.5
Daniel Lythgo	NC	NC	NC	10/Sep/18	Monthly	03/Aug/18	to	07/Sep/18	2.6	1.1	0.7	1.2	0.8	0.9	4.2	1.4	0.5
Daniel Lythgo	NC	NC	NC	17/Oct/18	Monthly	07/Sep/18	to	08/Oct/18	1.2	1.1	0.8	1.0	0.8	0.8	1.0	1.4	0.5
Daniel Lythgo	NC	NC	NC	22/Nov/18	Monthly	08/Oct/18	to	08/Nov/18	1.3	1.2	0.7	1.8	0.9	1.4	1.7	1.3	1.2
Daniel Lythgo	NC	NC	NC	27/Dec/18	Monthly	08/Nov/18	to	06/Dec/18	1.9	1.4	1.3	3.3	1.1	2.7	2.3	1.4	1.8
Daniel Lythgo	NC	NC	NC	11/Feb/19	Monthly	06/Dec/18	to	09/Jan/19	3.2	1.6	2.3	5.4	1.5	4.6	5.7	1.7	4.2
Daniel Lythgo	NC	NC	NC	13/Feb/19	Monthly	09/Jan/19	to	06/Feb/19	1.3	1.6	0.8	1.5	1.5	1.0	4.0	1.9	3.4
Daniel Lythgo	NC	NC	NC	22/Mar/19	Monthly	06/Feb/19	to	08/Mar/19	0.5	1.6	1.5	0.4	1.5	1.6	0.3	1.9	1.2
Daniel Lythgo	NC	NC	NC	18/Apr/19	Monthly	08/Mar/19	to	03/Apr/19	2.2	1.6	1.6	1.0	1.5	0.7	0.4	1.9	0.3
Daniel Lythgo	NC	NC	NC	22/May/19	Monthly	03/Apr/19	to	09/May/19	1.3	1.6	0.9	0.4	1.5	0.3	0.4	1.8	0.3
Daniel Lythgo	NC	NC	NC	17/Jun/19	Monthly	09/May/19	to	05/Jun/19	2.2	1.8	1.1	1.3	1.5	1.0	1.0	1.9	0.7
Daniel Lythgo	NC	NC	NC	11/Jul/19	Monthly	05/Jun/19	to	04/Jul/19	2.2	1.8	1.0	0.7	1.6	0.2	0.7	1.9	0.3
Daniel Lythgo	NC	NC	NC	16/Aug/19	Monthly	04/Jul/19	to	07/Aug/19	1.9	1.8	1.2	0.6	1.6	0.4	0.6	1.9	0.4
Daniel Lythgo	NC	NC	NC	20/Sep/19	Monthly	07/Aug/19	to	03/Sep/19	2.6	1.8	2.5	3.3	1.7	3.0	0.8	1.6	0.7
Daniel Lythgo	NC	NC	NC	16/Oct/19	Monthly	03/Sep/19	to	03/Oct/19	2.0	1.9	1.5	1.2	1.7	1.0	1.6	1.6	1.1
Daniel Lythgo	NC	NC	NC	13/Nov/19	Monthly	03/Oct/19	to	04/Nov/19	1.8	1.9	1.5	3.9	1.9	2.6	2.3	1.7	2.0
Daniel Lythgo	NC	NC	NC	12/Dec/19	Monthly	04/Nov/19	to	04/Dec/19	2.7	2.0	2.1	3.1	1.9	2.7	3.9	1.8	3.0
Daniel Lythgo	NC	NC	NC	13/Jan/20	Monthly	04/Dec/19	to	06/Jan/20	0.6	1.8	1.3	0.2	1.5	0.6	0.6	1.4	1.8
Daniel Lythgo	NC	NC	NC	14/Feb/20	Monthly	06/Jan/20	to	04/Feb/20	1.3	1.8	9.2	1.3	1.5	8.2	2.4	1.3	13.6

Sample Details									EPL Point 2			EPL Point 3			EPL Point 4		
Sampler	Time of Sample Collection			Date Results Received	Monitoring Frequency	Sampling Period			MD-2			MD-3			MD-4		
	EPL Point 2	EPL Point 3	EPL Point 4						Insoluble Matter	Rolling Annual Average	Ash Content	Insoluble Matter	Rolling Annual Average	Ash Content	Insoluble Matter	Rolling Annual Average	Ash Content
	MD-2	MD-3	MD-4			(g/m2/month)	(g/m2/month)	(g/m2/month)	(g/m2/month)	(g/m2/month)	(g/m2/month)	(g/m2/month)	(g/m2/month)	(g/m2/month)			
	EPA Annual Average Guideline					4.0 (Annual Average)	4.0 (Annual Average)	N/A	4.0 (Annual Average)	4.0 (Annual Average)	N/A	4.0 (Annual Average)	4.0 (Annual Average)	N/A			
Daniel Lythgo	NC	NC	NC	23/Mar/20	Monthly	04/Feb/20	to	03/Mar/20	0.7	1.8	2.3	0.3	1.4	1.1	0.1	1.2	0.7
Daniel Lythgo	NC	NC	NC	15/Apr/20	Monthly	03/Mar/20	to	02/Apr/20	0.3	1.6	2.7	0.3	1.4	2.3	0.5	1.2	1.2
Daniel Lythgo	NC	NC	NC	21/May/20	Monthly	02/Apr/20	to	08/May/20	1.0	1.6	0.6	0.9	1.4	0.6	0.8	1.3	0.3
Daniel Lythgo	NC	NC	NC	10/Jun/20	Monthly	08/May/20	to	02/Jun/20	0.9	1.5	0.3	1.0	1.4	0.4	1.3	1.3	0.6
Daniel Lythgo	NC	NC	NC	20/Jul/20	Monthly	02/Jun/20	to	02/Jul/20	0.4	1.4	0.1	0.5	1.4	0.2	0.7	1.3	0.3
Daniel Lythgo	NC	NC	NC	11/Aug/20	Monthly	02/Jul/20	to	05/Aug/20	2.8	1.4	2.4	0.5	1.4	0.3	1.0	1.3	0.5
Daniel Lythgo	9:45	9:55	10:00	22/Sep/20	Monthly	05/Aug/20	to	16/Sep/20	0.8	1.3	0.3	0.4	1.1	0.2	0.7	1.3	0.3
Daniel Lythgo	10:00	10:10	10:15	20/Oct/20	Monthly	16/Sep/20	to	09/Oct/20	0.9	1.2	0.3	0.8	1.1	0.4	1.1	1.3	0.5
Daniel Lythgo	10:15	10:25	10:30	20/Nov/20	Monthly	09/Oct/20	to	12/Nov/20	0.2	1.1	0.4	0.4	0.8	0.9	0.5	1.1	1.0
Daniel Lythgo	10:00	10:10	10:15	23/Dec/20	Monthly	12/Nov/20	to	11/Dec/20	0.4	0.9	0.8	0.4	0.6	1.8	0.3	0.8	0.8
Daniel Lythgo	10:00	10:10	10:15	19/Jan/21	Monthly	11/Dec/20	to	13/Jan/21	0.9	0.9	0.6	0.9	0.6	0.6	0.5	0.8	0.3
Daniel Lythgo	10:40	10:50	10:55	23/Feb/21	Monthly	13/Jan/21	to	09/Feb/21	1.1	0.9	0.5	0.7	0.6	0.3	1.5	0.8	0.5
Daniel Lythgo	11:15	11:25	11:30	16/Mar/21	Monthly	09/Feb/21	to	08/Mar/21	0.6	0.9	0.2	0.3	0.6	0.2	0.2	0.8	0.1
Daniel Lythgo	10:20	10:40	10:45	14/Apr/21	Monthly	08/Mar/21	to	07/Apr/21	0.8	0.9	0.5	0.4	0.6	0.3	0.5	0.8	0.3
Daniel Lythgo	10:20	10:40	10:45	18/May/21	Monthly	07/Apr/21	to	05/May/21	1.3	0.9	0.6	0.9	0.6	0.5	1.2	0.8	0.6
Daniel Lythgo	9:30	9:45	9:50	29/Jun/21	Monthly	05/May/21	to	17/Jun/21	0.6	0.9	0.3	0.3	0.5	0.3	0.4	0.7	0.2
Daniel Lythgo	9:10	9:25	9:30	26/Jul/21	Monthly	17/Jun/21	to	12/Jul/21	0.9	0.9	0.7	0.7	0.6	0.4	0.5	0.7	0.3
Daniel Lythgo	11:00	11:15	11:20	26/Aug/21	Monthly	12/Jul/21	to	13/Aug/21	2.4	0.9	1.1	2.4	0.7	1.2	1.4	0.7	0.3
Daniel Lythgo	7:45	8:00	8:05	21/Sep/21	Monthly	13/Aug/21	to	10/Sep/21	10.9	1.8	7.9	0.8	0.8	0.5	0.7	0.7	0.3
Daniel Lythgo	8:45	8:55	9:00	11/Oct/21	Monthly	10/Sep/21	to	06/Oct/21	3.4	2.0	2.3	5.0	1.1	3.6	1.2	0.7	0.4
Daniel Lythgo	9:20	9:30	9:35	16/Nov/21	Monthly	06/Oct/21	to	05/Nov/21	1.9	2.1	1.0	2.7	1.3	1.5	1.3	0.8	0.7
Daniel Lythgo	12:15	12:25	12:30	05/Jan/22	Monthly	05/Nov/21	to	05/Dec/21	0.5	2.1	0.3	0.7	1.3	0.4	5.9	1.3	4.1
Daniel Lythgo	10:25	10:35	10:40	27/Jan/22	Monthly	05/Dec/21	to	14/Jan/22	0.5	2.1	0.4	0.5	1.3	0.5	2.5	1.4	1.7
Daniel Lythgo	9:35	9:45	9:50	14/Feb/22	Monthly	14/Jan/22	to	07/Feb/22	0.3	2.0	0.2	0.1	1.2	0.1	0.6	1.4	0.5
Daniel Lythgo	10:05	10:15	10:20	07/Mar/22	Monthly	07/Feb/22	to	07/Mar/22	0.2	2.0	0.1	3.8	1.5	1.0	0.4	1.4	0.2
Daniel Lythgo	13:15	13:25	13:30	28/Apr/22	Monthly	07/Mar/22	to	07/Apr/22	1.3	2.0	0.6	0.7	1.6	0.3	1.1	1.4	0.4
Daniel Lythgo	11:25	11:30	11:35	17/May/22	Monthly	07/Apr/22	to	07/May/22	0.7	2.0	0.3	0.3	1.5	0.1	0.4	1.4	0.2
Daniel Lythgo	9:25	9:35	9:40	29/Jun/22	Monthly	07/May/22	to	20/Jun/22	0.3	1.9	0.1	1.3	1.6	0.9	0.4	1.4	0.2
Daniel Lythgo	8:45	8:55	9:00	03/Aug/22	Monthly	20/Jun/22	to	22/Jul/22	0.7	1.9	0.3	NC	1.7	NC	0.7	1.4	0.3
Daniel Lythgo	9:15	9:25	9:30	06/Sep/22	Monthly	22/Jun/22	to	25/Aug/22	0.6	1.8	0.2	0.6	1.5	0.3	0.8	1.3	0.5
Daniel Lythgo	10:55	11:05	11:10	29/Sep/22	Monthly	25/Aug/22	to	20/Sep/22	0.7	0.9	0.2	1.6	1.6	1.0	0.8	1.3	0.3
Daniel Lythgo	8:35	8:45	8:50	02/Nov/22	Monthly	20/Sep/22	to	24/Oct/22	0.8	0.7	0.1	1.0	1.2	0.3	1.1	1.3	0.4
Daniel Lythgo	7:55	8:05	8:10	29/Nov/22	Monthly	24/Oct/22	to	15/Nov/22	0.7	0.6	0.3	1.1	1.1	0.6	0.9	1.3	0.4
Daniel Lythgo	8:25	8:35	8:40	09/Jan/23	Monthly	15/Nov/22	to	20/Dec/22	0.6	0.6	0.3	1.1	1.1	0.8	2.3	1.0	1.7
Daniel Lythgo	10:55	11:05	11:10	28/Feb/23	Monthly	20/Dec/22	to	25/Jan/23	0.7	0.6	0.2	1.4	1.2	0.6	2.5	1.0	1.6
Daniel Lythgo	8:15	8:25	8:30	10/Mar/23	Monthly	25/Jan/23	to	24/Feb/23	0.9	0.7	0.5	1.6	1.3	1.1	0.5	1.0	0.3
Daniel Lythgo	9:30	9:40	9:45	29/Mar/23	Monthly	24/Feb/23	to	20/Mar/23	1.4	0.8	0.3	0.4	1.0	0.4	1.1	1.1	0.4
Daniel Lythgo	11:20	11:30	11:35	02/May/23	Monthly	20/Mar/23	to	21/Apr/23	0.9	0.8	0.2	0.8	1.0	0.5	0.6	1.0	0.4
Daniel Lythgo	8:10	8:20	8:25	08/Jun/23	Monthly	21/Apr/23	to	31/May/23	0.5	0.7	0.1	1.3	1.1	0.2	0.4	1.0	0.1



Sample Details									EPL Point 2			EPL Point 3			EPL Point 4		
Sampler	Time of Sample Collection			Date Results Received	Monitoring Frequency	Sampling Period			MD-2			MD-3			MD-4		
	EPL Point 2	EPL Point 3	EPL Point 4						Insoluble Matter	Rolling Annual Average	Ash Content	Insoluble Matter	Rolling Annual Average	Ash Content	Insoluble Matter	Rolling Annual Average	Ash Content
	MD-2	MD-3	MD-4			(g/m2/month)	(g/m2/month)	(g/m2/month)	(g/m2/month)	(g/m2/month)	(g/m2/month)	(g/m2/month)	(g/m2/month)	(g/m2/month)			
	EPA Annual Average Guideline					4.0 (Annual Average)	4.0 (Annual Average)	N/A	4.0 (Annual Average)	4.0 (Annual Average)	N/A	4.0 (Annual Average)	4.0 (Annual Average)	N/A			
Daniel Lythgo	11:45	11:55	12:00	14/Jul/23	Monthly	31/May/23	to	30/Jun/23	0.7	0.8	0.2	0.1	1.0	0.1	0.2	1.0	0.1
Daniel Lythgo	9:30	9:45	9:50	17/Aug/23	Monthly	30/Jun/23	to	01/Aug/23	1.2	0.8	0.4	0.9	1.0	0.2	3.2	1.2	0.3
Daniel Lythgo	9:45	9:55	10:00	17/Sep/23	Monthly	01/Aug/23	to	01/Sep/23	1.7	0.9	0.7	1.0	1.0	0.6	0.7	1.2	0.3
L. Pyne & B. Collins (ALS)	8:30	8:40	8:50	23/Oct/23	Monthly	01/Sep/23	to	29/Sep/23	0.4	0.9	0.2	0.9	1.0	0.5	0.7	1.2	0.3
L. Pyne & S. Carter (ALS)	8:00	8:10	8:25	13/Nov/23	Monthly	29/Sep/23	to	30/Oct/23	0.4	0.8	0.3	0.8	0.9	0.6	0.4	1.1	0.3
C. Bulkeley (ALS)	9:10	8:40	8:50	11/Dec/23	Monthly	30/Oct/23	to	28/Nov/23	0.3	0.8	0.2	1.4	1.0	0.7	0.8	1.1	0.4
C. Bulkeley (ALS)	7:45	7:35	7:30	07/Mar/24	Monthly	28/Nov/23	to	29/Dec/23	0.4	0.8	0.3	1.4	1.0	1.2	0.7	1.0	0.5
J. Sharp (ALS)	11:20	11:25	11:30	07/Mar/24	Monthly	29/Dec/23	to	29/Jan/24	0.2	0.8	0.1	0.9	1.0	0.2	0.2	0.8	0.1
J. Sharp (ALS)	8:20	8:10	8:00	25/Mar/24	Monthly	29/Jan/24	to	29/Feb/24	0.7	0.7	0.4	0.4	0.9	0.3	0.6	0.8	0.4
L. Pyne (ALS)	7:30	7:25	7:20	11/Apr/24	Monthly	29/Feb/24	to	28/Mar/24	1.4	0.7	0.3	1.4	0.9	0.2	1.7	0.9	0.3
<b>Average of all Results</b>									<b>1.2</b>	<b>1.2</b>	<b>0.8</b>	<b>1.0</b>	<b>1.0</b>	<b>0.7</b>	<b>1.0</b>	<b>1.0</b>	<b>0.7</b>
<b>Maximum of all Results</b>									<b>11.4</b>	<b>2.1</b>	<b>10.1</b>	<b>5.4</b>	<b>1.9</b>	<b>8.2</b>	<b>5.9</b>	<b>1.9</b>	<b>13.6</b>
<b>Median of all Results</b>									<b>0.8</b>	<b>1.1</b>	<b>0.4</b>	<b>0.8</b>	<b>0.9</b>	<b>0.5</b>	<b>0.7</b>	<b>0.9</b>	<b>0.4</b>
<b>Minimum of all Results</b>									<b>0.1</b>	<b>0.4</b>	<b>0.0</b>	<b>0.1</b>	<b>0.5</b>	<b>0.0</b>	<b>0.1</b>	<b>0.4</b>	<b>0.1</b>



# Monitoring Results - Deposited Dust - Summary

**Chart:** Total Insoluble Matter (12 Months)  
**Period:** Past 12 months (Apr-2023 to Mar-2024)

