



METROMIX PTY LIMITED

Transport Management Plan

December 2019

Document Control

Document Title	Transport Management Plan			
Document Number				
Document Owner	Metromix Pty Ltd			
Revision	Issue Date	Originator	Reviewed	Approved
Original (Draft 1)	9 August 2013			W Sanderson
Revision 1 (Final Draft)	19 August 2013		W Sanderson	W Sanderson
Revision 2	10 December 2018		M. Yunusa / N. Warren	W. Sanderson
Revision 3	22 March 2019	N. Warren	M. Yunusa	M. Yunusa
Revision 4	22 March 2019	N. Warren	M. Yunusa	
Revision 5	9 December 2019	N. Warren	M. Yunusa	M. Yunusa
Next Review Due	<p>Within 3 months of the submission of an:</p> <ul style="list-style-type: none"> (a) annual review under Schedule 5 Condition 4; (b) incident report under Schedule 5 Condition 7; (c) audit report under Schedule 5 Condition 9:and (d) any modifications to the Project Approval, <p>Note: Metromix will review, and if necessary, also revise the strategies, plans, and programs prepared in accordance with the Project Approval that are referred to in this Strategy.</p>			

Approved by

the Secretary's nominee, Matthew Sprott,
in December 2019

This Copyright is included for the protection of this document

COPYRIGHT

© Metromix Pty Ltd 2019

All intellectual property and copyright reserved.

Apart from any fair dealing for the purpose of private study, research, criticism or review, as permitted under the Copyright Act, 1968, no part of this report may be reproduced, transmitted, stored in a retrieval system or adapted in any form or by any means (electronic, mechanical, photocopying, recording or otherwise) without written permission. Enquiries should be addressed to Metromix Pty Ltd.

CONTENTS

Page

COMMONLY USED ACRONYMS	5
1 INTRODUCTION	7
2 APPROVED ACTIVITIES	9
3 CONSULTATION	11
3.1 GOVERNMENT AGENCY CONSULTATION	12
4 LEGAL AND OTHER REQUIREMENTS.....	12
4.1 PROJECT APPROVAL PA10_0183	12
4.2 ENVIRONMENT PROTECTION LICENCE 0536	14
4.3 STATEMENT OF COMMITMENTS	14
5 OBJECTIVES AND OUTCOMES	15
6 PERSONNEL MANAGEMENT	16
6.1 ROLES AND RESPONSIBILITIES	16
6.2 COMPETENCE TRAINING AND AWARENESS.....	16
7 CONTROL MEASURES	17
8 PERFORMANCE AND MONITORING	17
8.1 DAILY TRUCK MOVEMENTS	17
8.2 TRUCK WHEEL WASHES	18
9 COMPLAINTS HANDLING AND RESPONSE.....	18
10 INCIDENT REPORTING	19
11 PUBLICATION OF MONITORING INFORMATION.....	20
12 PLAN REVIEW.....	20

APPENDICES

Appendix 1 Driver's Code of Conduct	23
Appendix 2 Truck Movements – Proposed Reporting Forms	33
Appendix 3 Consultation Record.....	41

FIGURES

Figure 1.1 Locality Plan.....	8
Figure 2.1 Ongoing Transport Routes.....	10

CONTENTS

Page

TABLES

Table 4.1: Transport-related Approval Conditions	13
Table 4.2: Environment Protection Licence Requirements	14
Table 4.3: Transport Management-related Commitments	15
Table 5.1: Objectives and Key Performance Outcomes relating to Transport Management	15
Table 6.1: Roles and Responsibilities for Effective Transport Management	16
Table 7.1: Traffic and Transport Control Measures	17

COMMONLY USED ACRONYMS

AS	Australian Standard
DPIE	Department of Planning, Industry and Environment
EP&A Act	<i>Environmental Planning and Assessment Act 1979</i>
EPA	Environment Protection Authority
EPL	Environment Protection Licence
NATA	National Association of Testing Authorities
PA	Project Approval
RMS	Roads and Maritime Services
LMCC	Lake Macquarie City Council

This page has intentionally been left blank

1 INTRODUCTION

This *Transport Management Plan* has been prepared by Metromix Pty Limited (Metromix) for the Teralba Quarry (the Quarry). The Quarry is located west of the suburb of Teralba, beyond the western shores of Lake Macquarie (**Figure 1.1**). The Plan has been prepared in satisfaction of *Condition 3(44)* of Project Approval (PA) 10_0183 (originally approved on 22 February 2013). A modification to PA 10_0183 was approved on 16 April 2018.

Condition 3(44): Transport Management Plan

“The Proponent must prepare and implement a Transport Management Plan for the project to the satisfaction of the Secretary this plan must:

- a) *be prepared by a suitably qualified traffic consultant in consultation with the RMS and Council, and submitted to the Secretary for approval within 4 months of the date of this approval*
- b) *include a drivers code of conduct for the project;*
- c) *describe the measures that would be implemented to ensue:*
 - *drivers are aware of potential safety issues along the haulage routes in particular near schools;*
 - *drivers of project-related vehicles comply with the drivers’ code of conduct;*
 - *compliance with the relevant conditions of this approval; and*
- d) *Include a program to monitor the effectiveness of the implementation of these measures.*

The Proponent must implement the plan as approved by the Secretary.

The Plan addresses the following elements.

- The activities approved under PA 10_0183.
- The consultation undertaken during preparation of this Plan.
- The legal and other requirements associated with transport management from the Quarry.
- The objectives and key performance outcomes for this Plan and the Quarry.
- Roles and responsibilities in implementing this Plan.
- Competence training and awareness for Metromix’s personnel and contractors.
- The proximity of residences to the approved transport routes.
- A description of the potential traffic-related impacts.



REFERENCE
— Property Boundary
— Quarry Site Boundary

SCALE 1:60 000 (A4)



Base Map Source: Newcastle (1983) & Lake Macquarie (1977) 1:100 000 Topographic Maps

Figure 1.1
LOCALITY PLAN

- Transport management measures that will be implemented during the ongoing operation of the Quarry.
- Traffic-related monitoring that will be undertaken.
- Corrective and preventative actions that will be implemented should exceedance(s) of the relevant criteria be identified.
- Complaints handling and response procedures that will be implemented.
- Incident reporting procedures.
- Publication of monitoring information.
- Plan review.

The above elements reflect each of the relevant specific issues outlined in *Condition 5(3) of PA 10_0183*, where relevant.

The approved Quarry is fully described in the following documents noting that the *Environmental Assessment* includes details of the product transportation activities.

- *Environmental Assessment* for the Teralba Quarry Extensions, November 2011.
- *Specialist Consultant Studies Compendium* for the Teralba Quarry Extensions, November 2011. Part 1 – Traffic Assessment.
- *Environmental Assessment* of Modification 1 for Project Approval 10_0183 for the Teralba Quarry – December 2017.

A brief description of the approved activities is provided in Section 2.

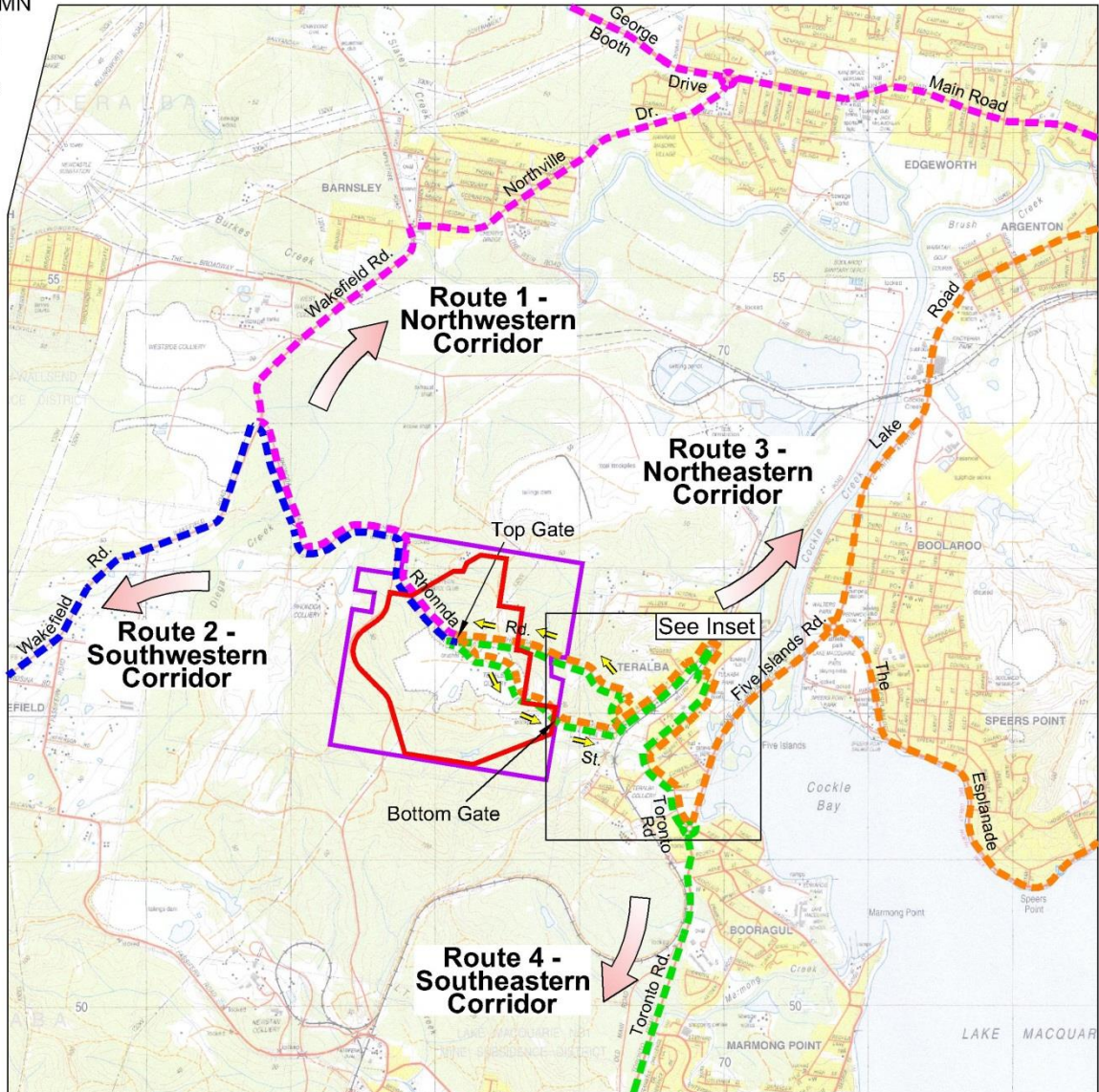
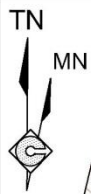
This management plan is an over-arching document and is supported by a range of operating procedures called “Safe Work Method Statements” (SWMS) incorporated in the Quarry Safety Management Plan. “Driver’s Code of Conduct” incorporating the controls for managing traffic (see Section 11.1 – Management Procedures).

2 APPROVED ACTIVITIES

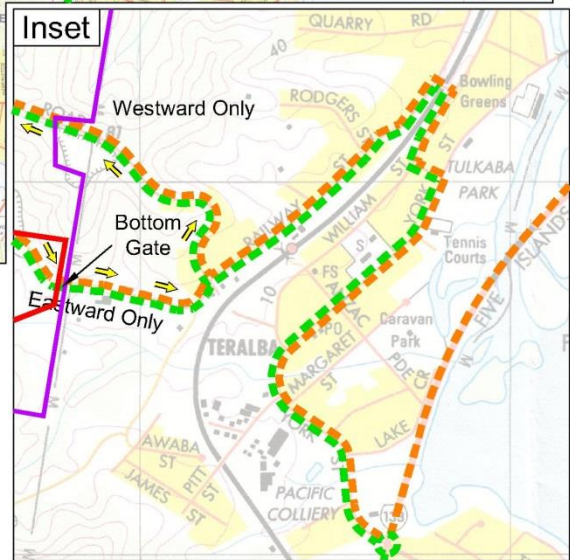
The approved activities within the Teralba Quarry comprise the full range of activities undertaken prior to 22 February 2013 and the extension of extraction operations to the north and south of the previously approved extraction areas. The four approved product transport routes from the Quarry are displayed in **Figure 2.1** and listed below.

Route 1 – Northwestern Corridor:

Westwards along Rhondda Rd, and then northwards along Wakefield Rd and Northville Rd to George Booth Drive.



- REFERENCE**
- Quarry Site
 - Property Boundary
 - - - Transport Route 1
 - - - Transport Route 2
 - - - Transport Route 3
 - - - Transport Route 4



SCALE 1:50 000 (A4)



Base Map Source: Wallsend 9232-3-S 1:25 000 Topographic Map - Date: 2002

Figure 2.1
ONGOING TRANSPORT ROUTES

Route 2 – Southwestern Corridor:

Westwards along Rhondda Rd, and then southwards along Wakefield Rd to the F3 Freeway.

Route 3 – Northeastern Corridor:

Northeast along Railway St Teralba, crossing the railway line, then southwards along York St Teralba, then northeasterly along Five Islands Road to either the Esplanade or Lake Road.

Route 4 – Southeastern Corridor:

Northeast along Railway St Teralba, crossing the railway line, then southwards along York St Teralba, and Toronto Road.

The type of truck that accesses the Quarry varies depending on client demands. Transport activities currently include light rigid, medium rigid, heavy rigid, truck & dog, truck & quad dog, truck and stag (<19m), semi-trailer tippers and floats.

Condition 2(8) of PA 10_0183 nominates that the Proponent shall not:

- a) transport more than 1 million tonnes of quarry products from the site in any calendar year; or
- b) despatch more than 326 laden trucks from the site on any day; or
- c) despatch more than 241 laden trucks per day or 20 per hour westwards along Rhondda Road;
- d) despatch more than 85 laden trucks per day or 8 per hour eastwards through Teralba;
- e) despatch laden trucks for travel through Teralba between 6:00pm and 6:00am; or
- f) receive unladen trucks via the Railway St entrance between 6:00pm and 7:00am”

The approved period for the distribution of products from the Quarry is from 4:00am Monday to 6:00pm Saturday, excluding public holidays. *Condition 3(6) of PA 10_0183* nominates that trucks delivering incoming VENM should only arrive between 7:00am and 5:00pm Monday to Friday and 7:00am to 2:00pm Saturday, public holidays excluded.

3 CONSULTATION

A copy of this Plan was provided to DPIE, RMS and Lake Macquarie City Council for comment. Comments received during this process have been incorporated into the final draft of the Plan. A copy of the comments are presented in **Appendix 3**.

In addition, it is noted that Metromix consults with the Community Consultative Committee twice per year.

3.1 GOVERNMENT AGENCY CONSULTATION

The following government agency consultation was undertaken during the preparation of this Plan.

- **Lake Macquarie City Council (LMCC).**

Metromix and its traffic consultants (GTA Consulting) met with Council representatives on various occasions during the preparation of the Plan to discuss issues of interest in this Plan. Council representatives met with GTA Consulting and assisted with the audit of the York Street/Anzac Road intersection.

- A draft copy of this Plan was sent to LMCC for comment in March 2019. LMCC responded to confirm the process for payment of road maintenance contributions. Contribution payments are ongoing and managed separately from this plan.

- **Roads and Maritime Services (RMS).**

Discussions were held with RMS and correspondence generated relating to the requirement in *Condition 3(41) of PA 10_0183* with respect to the installation of flashing lights near Barnsley and Edgeworth Heights Public Schools. RMS advised that it is “only RMS that selects schools to have flashing lights installed”. Condition 3(41) was removed from PA 10_0183 under Modification 1 as the NSW Government implemented a policy to install the lights at all schools which made this requirement redundant.

In correspondence dated 12 January 2019, RMS requested that the Transport Management Plan be updated to include the type/size of trucks accessing the site (Section 2) and that the UHF call channel used on site for mobile equipment be included in the Drivers Code of Conduct (**Appendix 1**).

4 LEGAL AND OTHER REQUIREMENTS

4.1 PROJECT APPROVAL PA10_0183

Metromix was granted *Project Approval (PA) 10_0183* by the Secretary, as a delegate of the Minister for Planning and Infrastructure on 22 February 2013 pursuant to Part 3A of the *Environmental Planning and Assessment Act 1979* (EP&A Act). A modification to PA 10_0183 was approved on 16 April 2018. The approval includes a comprehensive set of conditional requirements that Metromix must comply with during the life of the Quarry and sets out the core requirements of this Plan in *Condition 5(3) of PA 10_0183*. Traffic-related conditions relevant to operations within the Quarry within this approval are reproduced in **Table 4.1**.

Table 4.1: Transport-related Approval Conditions

Condition	Requirement										
2(8)	<ul style="list-style-type: none"> • The Proponent shall not: <ul style="list-style-type: none"> a) transport more than 1 million tonnes of quarry products from the site in any calendar year; or b) despatch more than 326 laden trucks from the site on any day; or c) despatch more than 241 laden trucks per day or 20 per hour westwards along Rhondda Road; d) despatch more than 85 laden trucks per day or 8 per hour eastwards through Teralba; e) despatch laden trucks for travel through Teralba between 6:00pm and 6:00am; or f) receive unladen trucks via the Railway St entrance between 6:00pm and 7:00am. 										
2(9)	<p>The Proponent shall limit the total hourly truck despatch rates from the site to the levels shown below:</p> <table border="1" data-bbox="333 725 1236 943"> <thead> <tr> <th data-bbox="333 725 707 768">Despatch Period</th> <th data-bbox="707 725 1236 768">Maximum Hourly Despatch Rates</th> </tr> </thead> <tbody> <tr> <td data-bbox="333 768 707 810">6:00am to 7:00am</td> <td data-bbox="707 768 1236 810">Up to 28 Loaded Trucks</td> </tr> <tr> <td data-bbox="333 810 707 853">7:00am to 6:00pm</td> <td data-bbox="707 810 1236 853">Up to 20 Loaded Trucks</td> </tr> <tr> <td data-bbox="333 853 707 896">6:00pm to 5:00am</td> <td data-bbox="707 853 1236 896">Up to 6 Loaded Trucks*</td> </tr> <tr> <td data-bbox="333 896 707 943">5:00am to 6:00am</td> <td data-bbox="707 896 1236 943">Up to 12 Loaded Trucks*</td> </tr> </tbody> </table> <p>Note 1. Despatch times and Maximum hourly rates westwards along Rhondda Rd and eastwards through Teralba are further limited by <i>Condition 8</i>.</p> <p>Note 2 * Only Trucks owned by the proponent, its shareholders or approved contractors and fitted with Airbag suspension may transport quarry products from the site between 6:00pm and 6:00am.</p>	Despatch Period	Maximum Hourly Despatch Rates	6:00am to 7:00am	Up to 28 Loaded Trucks	7:00am to 6:00pm	Up to 20 Loaded Trucks	6:00pm to 5:00am	Up to 6 Loaded Trucks*	5:00am to 6:00am	Up to 12 Loaded Trucks*
Despatch Period	Maximum Hourly Despatch Rates										
6:00am to 7:00am	Up to 28 Loaded Trucks										
7:00am to 6:00pm	Up to 20 Loaded Trucks										
6:00pm to 5:00am	Up to 6 Loaded Trucks*										
5:00am to 6:00am	Up to 12 Loaded Trucks*										
3(31)	<p>Within 6 months of the date of this approval the Proponent shall:</p> <ul style="list-style-type: none"> a) commission a suitably qualified and experienced person endorsed by the Secretary to undertake a road safety audit report of the intersection of York St and Anzac Parade in consultation with Council; b) submit the report and any recommendations to the Secretary for approval; and c) implement any recommendations of the road safety audit to upgrade the intersection of York St and Anzac Parade to the satisfaction of Council. 										
3(32)	<p>The Proponent shall install truck wheel wash facilities within 6 months of the date of this approval at all quarry exits and following such installation, must ensure that all trucks have their tyres and vehicles cleaned of mud, dirt and dust prior to exiting the site, so as to avoid tracking dirt onto public roads, to the satisfaction of the Secretary.</p>										
3(34)	<p>Within 6 months of the date of this approval (i.e. 22 August 2013), the Proponent shall cease transporting quarry material by truck between the quarry pits.</p>										
3(35)	<p>The Proponent may only transport quarry products from the site on the designated Haulage Routes, except in circumstances where the final destination of the quarry products can only be accessed by other roads.</p>										
3(36)	<p>The Proponent shall ensure that all heavy vehicles:</p> <ul style="list-style-type: none"> a) Do not exceed an on-site speed limit of 30km per hour; b) Exiting the site to the east via bottom gate (i.e. to Railway St) during the Day Shoulder period do not exceed the on-site speed limit and minimise noise as far as reasonable between Railway St and Teralba Business Park; and c) Entering or leaving the site have their loads covered. 										

Table 4.1: Transport-related Approval Conditions – (Cont'd)

Condition	Requirement
3(37)	During the AM peak period and PM peak period, the Proponent shall implement all reasonable and feasible measures to minimise project related traffic delays and congestion at the intersection of Toronto and Five Islands roads and along York Street, to the satisfaction of the Secretary.
3(38)	Only trucks owned by the proponent, its shareholders or approved contractors and fitted with airbag suspension may transport quarry products from site between 6:00am and 6:00pm.
3(39)	The Proponent shall regularly maintain the pavement of the on-site road that connects to Railway Street to minimise dust generation and potholes, to the satisfaction of the Secretary.
3(40)	<p>a) The Proponent shall keep accurate records of:</p> <ul style="list-style-type: none"> - The amount of quarry products transported from the site (monthly and annually); and - All laden trucks movements from the site (hourly, daily, weekly, monthly, and annually);and <p>b) Publish these records on its website on a quarterly basis.</p>
3(42)	<p>Road Signage</p> <p>Prior to carrying out quarrying operations under this approval, the Proponent shall install "Trucks entering" warning signs 200m either side of the quarry entrances on public roads.</p>
3(43)	<p>Parking</p> <p>The Proponent shall provide sufficient parking on site for all project-related traffic in accordance with Council's Parking codes and in consultation with Council.</p>

4.2 ENVIRONMENT PROTECTION LICENCE 0536

Table 4.2 presents the traffic-related conditions from the Environment Protection Licence 0536.

Table 4.2: Environment Protection Licence Requirements

Condition	Condition
L4.2	<p>Receipt of Concrete/VENM or ENM:</p> <p>Monday to Friday 7:00am to 5:00pm</p> <p>Saturday 7:00am to 5:00pm</p> <p>Sundays and Public Holidays None</p>
L4.2	<p>Loading and Despatch of Quarry Trucks:</p> <p>4:00am Monday to Midnight Friday</p> <p>Midnight Friday to 6:00pm Saturday</p> <p>Sundays and Public Holidays – None</p>

4.3 STATEMENT OF COMMITMENTS

Table 4.3 presents the traffic-related conditions from the Statement of Commitments.

Table 4.3: Transport Management-related Commitments

Commitment	Timing
9.1 Limit laden quarry-related truck movement numbers through Teralba: – 9 per hour; and – 85 per day.	Ongoing.
9.2 Ensure that no product trucks from Teralba Quarry travel eastward through Teralba between 6:00pm and 6:00am.	Any day.
9.3 Ensure all vehicles exiting the Quarry Site pass through a wheel-wash facility to remove dust generating material.	Prior to removal of product from within the extensions.
9.4 Provide a contribution to Lake Macquarie City Council during the ongoing life of the quarry if a suitable project approval is granted.	Quarterly.
9.5 Prepare, implement and enforce 'Driver's Code of Conduct' addressing: – times that trucks can operate, especially through Teralba – speed limits; – duty of care to other drivers and pedestrians; – complaints procedure; – covering loads; and – avoidance of exhaust brakes.	Prepare within 4 months of receipt of project approval.
9.6 Undertake all transport activities in accordance with the project approval and Environment Protection Licence 536.	Ongoing – see Table 4.3 .
9.7 Ensure that only Metromix owned trucks and those of accredited contractors using airbag suspension and other noise controls are used to transport products between 10:00pm and 6:00am.	Any operational day.
9.8 Ensure that all project-related vehicles are regularly serviced to ensure engine efficiencies are maintained at a standard that limits truck noise.	Ongoing.

5 OBJECTIVES AND OUTCOMES

Table 5.1 presents the objectives and key performance outcomes for this Plan and the Quarry.

Table 5.1: Objectives and Key Performance Outcomes relating to Transport Management

OBJECTIVES	KEY PERFORMANCE OUTCOMES
(a) To ensure compliance with all relevant Project Approval and Environment Protection Licence criteria and reasonable community expectations.	(i) Compliance is achieved with all relevant criteria nominated in the Project Approval 10-0183 and Environment Protection Licence 0536 and reasonable community expectations.
(b) To implement appropriate transport management measures throughout the life of the Quarry.	(ii) All identified transport management measures are implemented to the extent required.
(c) To implement an appropriate monitoring program to establish compliance or otherwise with relevant criteria throughout the life of the Quarry.	(iii) All identified monitoring is undertaken in accordance with the relevant procedures and at the relevant intervals.
(d) To implement an appropriate complaints handling and response protocol	(iv) Complaints (if any) are handled and responded to in an appropriate and timely manner.
(e) To implement continual improvement for investigating, implementing and reporting on reasonable and feasible measures to reduce air quality emissions.	(v) An appropriate continual improvement program has been implemented.
(f) To implement an appropriate incident reporting program, if required.	(vi) Incidents (if any) are reported in an appropriate and timely manner.

6 PERSONNEL MANAGEMENT

6.1 ROLES AND RESPONSIBILITIES

Table 6.1 presents the roles and responsibilities for the implementation of this Plan.

Table 6.1: Roles and Responsibilities for Effective Transport Management

Page 1 of 2

ROLES	RESPONSIBILITIES
Quarry Manager	<ul style="list-style-type: none"> • Ensure Compliance with Transport Management Plan • Training of personnel. • Training of transport operators in the Driver's Code of Conduct. • Ensure the despatch of trucks is undertaken in accordance the Project Approval conditions. • Ensure the Commitments for Traffic and Transport are being adhered to.
Quarry Supervisor	<ul style="list-style-type: none"> • Compliance with on-site Traffic and Transport Management plans, including speed limits, loads leaving the quarry are covered. • Truck Wheel Washes are operational
Despatch Personnel	<ul style="list-style-type: none"> • Control and Monitor Despatch Activities. • Recording transport route for laden trucks.
Administration Assistant	<ul style="list-style-type: none"> • Assemble Transport Data on a Daily Basis
Transport Supervisor	<ul style="list-style-type: none"> • Control and Monitor Despatch Activities including 6:00pm to 6:00am deliveries
IT Manager	<ul style="list-style-type: none"> • Place relevant traffic data onto Website
All personnel	<ul style="list-style-type: none"> • Comply with on-site and off-site traffic and transport rules, Driver's Code of Conduct and Safe Work Method Statements.

6.2 COMPETENCE TRAINING AND AWARENESS

All Metromix personnel and contractors and their employees will undergo site specific training incorporating transport and traffic awareness if appropriate as part of the Quarry's Safety , Health and Environmental (SHE) program. This program includes the following:

- Site Traffic Rules.
- Safe Site Delivery.
- Driver's Code of Conduct.
- Maximum Hourly Despatch Rates for Allocation and Sales Staff.
- Operation and Maintenance of Truck Wheel Washes.

All drivers will be required to conform to the Metromix's Code of Conduct for Truck Drivers.

Appendix 1 presents two codes, namely;

- for drivers arriving at/departing from the Quarry between 6:00am and 6:00pm; and

- ii. for drivers arising at/departing from the Quarry between 6:00pm and 6:00am.

Each driver will be required to sign the Driver’s Code of Conduct and a copy will be provided to the respective transport operators.

7 CONTROL MEASURES

Table 7.1 presents the traffic and transport procedures that will be implemented for traffic and transport from the Quarry.

Table 7.1: Traffic and Transport Control Measures

Source	Control Procedures	Personnel Responsible
Number of Laden Trucks Despatched	<ul style="list-style-type: none"> • Transport Allocations. • Despatch Software System. 	<ul style="list-style-type: none"> • Transport Supervisor/nominee. • Weighbridge Allocator.
Direction and Times Laden Trucks Despatched to	<ul style="list-style-type: none"> • Transport Allocations. • Despatch Software System. 	<ul style="list-style-type: none"> • Transport Supervisor/nominee. • Weighbridge Allocator.
VENM/ENM tonnes per calendar year	<ul style="list-style-type: none"> • Transport Allocations. • Despatch Software System. 	<ul style="list-style-type: none"> • Sales Department.
Speed Limits	<ul style="list-style-type: none"> • Safe Site Delivery. • Driver’s Code of Conduct. 	<ul style="list-style-type: none"> • Sales Department. • Weighbridge Allocator.
Truck Wheel Washes	<ul style="list-style-type: none"> • Driver’s Code of Conduct. • Maintenance. 	<ul style="list-style-type: none"> • Sales Department. • Quarry Supervisors.
Potential Safety Issues on Exit Routes	<ul style="list-style-type: none"> • Driver’s Code of Conduct. 	<ul style="list-style-type: none"> • Weighbridge Allocator.
Covering Loads	<ul style="list-style-type: none"> • Driver’s Code of Conduct. 	<ul style="list-style-type: none"> • Quarry Manager.
Avoidance of exhaust brakes usage	<ul style="list-style-type: none"> • Driver’s Code of Conduct. 	<ul style="list-style-type: none"> • Quarry Manager.
Maintenance of Metromix Road Trucks	<ul style="list-style-type: none"> • Maintenance Program. 	<ul style="list-style-type: none"> • Transport Supervisor.
Maintenance of Internal Roads	<ul style="list-style-type: none"> • Maintenance Program. 	<ul style="list-style-type: none"> • Quarry Manager.
Maintenance of Road Through Teralba Business Park	<ul style="list-style-type: none"> • Deed Agreement. 	<ul style="list-style-type: none"> • Quarry Manager.

8 PERFORMANCE AND MONITORING

8.1 DAILY TRUCK MOVEMENTS

The daily traffic movements of laden trucks despatched and tonnages transported from site will be reviewed by the Quarry Manager on a monthly basis to ensure compliance.

The quantity of quarry products transported from site and the movements of trucks on an hourly, weekly, monthly and annual basis will published on the Metromix website on a monthly basis.

An example of the reporting format is attached in **Appendix 2**.

8.2 TRUCK WHEEL WASHES

Maintenance staff will check the operation of both the eastern and western exit wheel washes on a daily basis, Monday to Friday, and the checklist will be reviewed by the Quarry Supervisor.

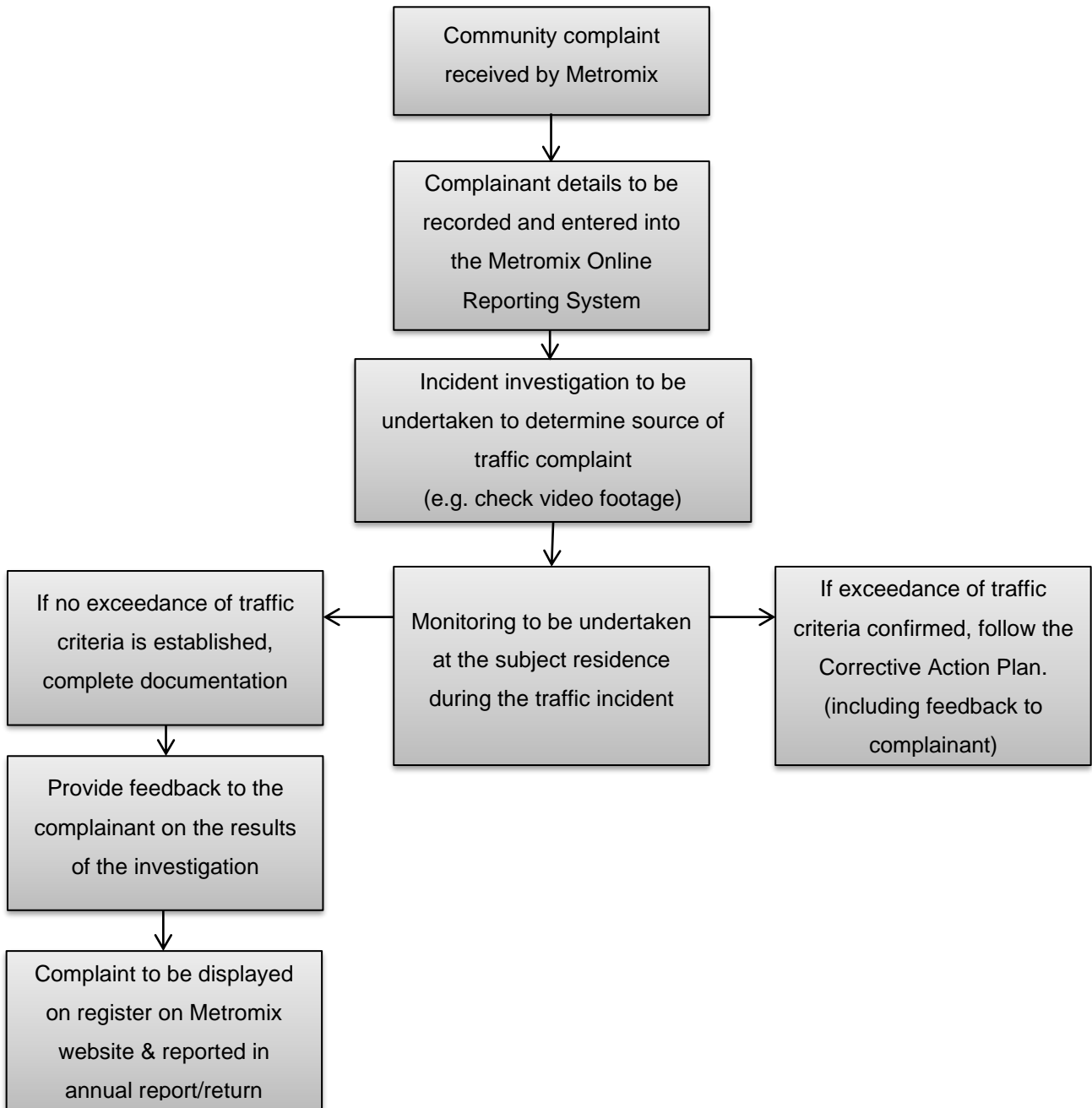
9 COMPLAINTS HANDLING AND RESPONSE

Metromix will advertise the community inquires/complaints line (02 4950 6640) as a minimum in the local phone directory and may also consider advertising the number through local media or on newsletters.

Metromix will respond to any registered community inquiries or complaints received by this number as described in the Rapid Online Reporting System.

The following flowchart shows the process Metromix will follow in the event a traffic complaint is received.

All complaints will be recorded using a proforma complaints record sheet and the nature and outcome of the complaint and subsequent investigation provided in summary form to the Community Consultative Committee and in the *Annual Review*.



10 INCIDENT REPORTING

PA 10_0183 defines an incident is an occurrence or set of circumstances that:

- causes or threatens to cause material harm to the environment; and/or
- exceeds the limits or performance measures/criteria in this approval

where material harm to the environment is unauthorised harm that:

- involves actual or potential harm to the health or safety of human beings or to ecosystems that is not trivial, or

- results in actual or potential loss or property damage of an amount, or amounts in aggregate, exceeding \$10,000, (such loss includes the reasonable costs and expenses that would be incurred in taking all reasonable and practicable measures to prevent, mitigate or make good harm to the environment)

All incidents must be recorded using the “Rapid Online Reporting System” that is available through the Metromix intranet website. The Risk Manager is to be notified as soon as possible to assist in determining corrective actions.

All incidents are to be notified to the Department of Planning, Industry and Environment (DPIE) in accordance with Condition 7 of Schedule 5 of PA 10_0183 and a report detailing at a minimum the time and date of the incident, details of the incident, measures implemented to prevent re-occurrence and discussion of any non-compliance with PA 10_0183 that resulted.

In addition, a summary of all incident reports will be provided to the Community Consultative Committee (CCC), made publicly available on the Metromix website and included in the *Annual Review* for the Quarry.

11 PUBLICATION OF MONITORING INFORMATION

All data required to demonstrate compliance with the limits in *Conditions 2(8) and 2(9) of PA 10_0183* will be made publicly available on the Teralba Quarry website with a summary included in each *Annual Review*. **Appendix 2** presents the proposed reporting forms to be completed on a daily basis.

The Quarry Manager will be responsible for publication of all relevant monitoring information.

12 PLAN REVIEW

In accordance with *Condition 5(3)(h) of PA 10_0183*, this *Transport Management Plan* will be reviewed and, if required, revised within 3 months of an:

- annual review;
- incident report;
- independent audit report; or
- any modification to Project Approval 10_0183.

As discussed in Section 3, Metromix will consult with the Community Consultative Committee prior to the review of the Transport Management Plan to establish whether any other issues need to be addressed in the updated document.

The Quarry Manager will be responsible for the review of this Plan.

Appendices

- Appendix 1 Driver's Code of Conduct
- Appendix 2 Truck Movements – Proposed Reporting Forms
- Appendix 3 Consultation Record

This page has intentionally been left blank

Appendix 1 Driver's Code of Conduct

This page has intentionally been left blank

METROMIX – TERALBA QUARRY
CODE OF CONDUCT FOR TRUCK DRIVERS
6:00 AM to 6:00 PM
Be Professional – It's Your Job!



1. General Responsibilities

As a driver carting raw materials from the Metromix Teralba Quarry, you must:

- be medically fit to drive at all times, please inform your employer if you have any medical condition which may affect your ability to drive;
- drive safely and show full consideration to other motorists, cyclist and pedestrians;
- wear a seat belt at all times whilst the vehicle is in motion;
- not use a mobile phone at any time whilst the vehicle is in motion unless it's a hands free unit;
- obey all legal speed limits;
- not drive whilst under the influence of any drugs, nor any medication which may affect your ability to drive. This includes both prescription and non-prescription medication. If taking any medication always check with your medical practitioner or pharmacist that it is safe to drive;
- not consume any alcohol before or during contracted journeys (or at any time beforehand on the same day) including drinking without exceeding the legal alcohol limit for driving; and
- use UHF channel 12 if transporting aggregate, UHF channel 39 for Pug Mill road base activities and internal UHF channels as instructed.

2. Chain of Responsibility

Under Chain of Responsibility Legislation, you must:

- take the required rest breaks;
- record working and rest hours;
- ensure your vehicle does not exceed mass limits;
- ensure your vehicle does not exceed dimension limits;
- loads are appropriately restrained by ground controlled methods (i.e. automatic tarp);
- do not exceed the legal speed limits; and
- do not tamper with, or remove any equipment required to be fitted to the vehicle.

3. On-Site Responsibilities

When operating your vehicle within the Metromix Teralba Quarry, you must:

- obey all safety and directional signage or instructions given by Metromix employees;
- not exceed 30 km/hr on internal roads;
- not smoke on site;
- wear a seat belt at all times;
- wear the following Personal Protective Equipment (PPE) if you exit your vehicle, other than at the weighbridge;
 - ✓ Hard hat
 - ✓ Safety glasses
 - ✓ Safety boots

- ✓ Hi-visibility clothing or vest
- when exiting the quarry, use Truck Wheel Wash; and
- report any incident/near miss to quarry management/nominee.

4. Travel Routes and Approved Hours

Metromix has approval to cart raw materials from the Teralba Quarry between 6:00am and 6:00pm on four approved transport routes (see **Figure A**).

Route 1 – Northwestern Corridor: Westwards along Rhondda Rd, and then northwards along Wakefield Rd and Northville Rd to George Booth Drive/Main Road roundabout.

- Do not enter or travel along Northville Rd prior to 5:50am or enter the Teralba Quarry prior to 6:00 am.
- Must Leave the Teralba Quarry by 6:00 pm.
- Do not use engine brakes to reduce speed at **any** point along the route
- Be aware of the tight bend on the northbound approach to the Pistol Club entrance (**Photo**).
- Be aware at the roundabout at Barnsley for pedestrian activity as the road changes from a rural Wakefield Rd onto the arterial Northville Drive. (**Photo**)



Bend Preceding Pistol Club Access



Barnsley Roundabout

- Be aware of primary school children on Northville Drive, near the intersection of The Weir Rd. (**Photo**)
- Be aware of primary school children on Northville Drive, from the intersection of Crest Avenue/Aroona St.



Northville Drive School Crossings

Route 2 – Southwestern Corridor: Westwards along Rhondda Rd, and then southwards along Wakefield Rd to the Palmers Rd.

- Do not enter or travel along Wakefield Rd prior to 5:50am or enter the Teralba Quarry prior to 6:00am.
- Must Leave the Teralba Quarry by 6:00pm.
- Do not use engine brakes to reduce speed at **any** point along the route.
- Be aware of the tight bend on the northbound approach to the Pistol Club entrance (**Photo**).
- Be aware of people horse riding beside Wakefield Rd.
- Do not exceed speed limits.



Bend Preceding Pistol Club Access

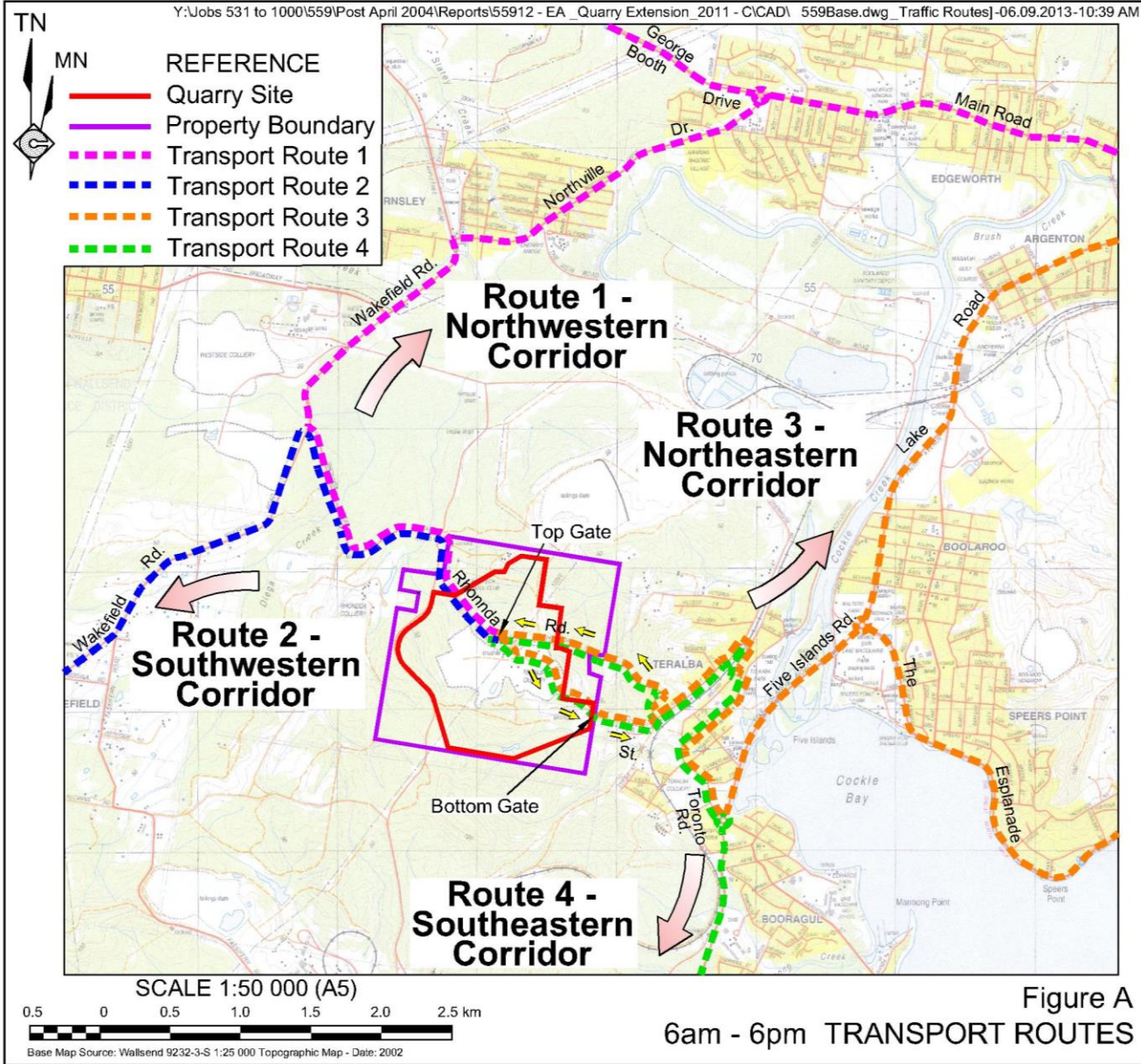


Figure A
6am - 6pm TRANSPORT ROUTES

Route 3 – Eastern Corridor: Northeast along Railway St Teralba, crossing the railway line, then southwards along York St, Teralba and Toronto Rd to Five Islands Rd or Lake Rd.

- Do not enter or travel through the Teralba township before 6:00am or after 6:00pm.
- Do not use engine brakes to reduce speed at **any** point along the route.
- Do not exceed the 15 km/hr speed limit on Railway St, between exiting the Teralba Business Park and Rhondda Rd.
- Be aware of a double 90 degree bend when crossing the railway bridge (**Photo**).



Double 90 Degree Bend at Railway Crossing

- There is a 40 km/hr school zone on York St. Be aware of primary school children (**Photo**).
- Be aware of the number of light vehicles turning at the intersection between York St and Anzac Parade.
- Be aware of the Pedestrian Crossing just south of the intersection between York St and Anzac Parade (**Photo**).



York St Teralba School Crossing



Northbound view of York St and Anzac Parade intersection showing the Pedestrian Crossing

5. Complaints

- Local residents, motorists, cyclists and/or pedestrians may lodge complaints against your vehicle or on-road driving behaviour. If Metromix receives any complaint of this nature, it will be investigated by Quarry Management and the complainant will be informed about the actions taken.
- If your vehicle or on-road driving behaviour is the cause of the complaint, you will face disciplinary action by Quarry Management and your employer will be informed.

6. Disciplinary Action

You will face disciplinary action if you fail to meet the requirements in this Code of Conduct or Metromix receives a confirmed community complaint regarding your vehicle or on-road driving behaviour.

The disciplinary procedure will involve the following.

- First instance – you will receive a verbal warning, including a verbal notification to your employer.
- Second instance – you will receive a written warning, including a written notification to your employer.
- Third instance – you will be dismissed from site, including a review of your employer’s contract/agreement with Metromix.

I agree to abide with this Code of Conduct

Authorisation by Metromix

Signed:

Signed:

Name (Print):

Name (Print):

Company:

Date:

Date:

METROMIX – TERALBA QUARRY
CODE OF CONDUCT FOR TRUCK DRIVERS

6:00 PM to 6:00 AM

Be Professional – It's Your Job!



1. General Responsibilities

As a driver carting raw materials from the Metromix Teralba Quarry, you must:

- not approach or leave the quarry through Teralba;
- be medically fit to drive at all times, please inform your employer if you have any medical condition which may affect your ability to drives;
- drive safely and show full consideration to other motorists, cyclists and pedestrians;
- wear a seat belt at all times whilst the vehicle is in motion;
- not use a mobile phone at any time whilst the vehicle is in motion unless it's a hands free unit;
- obey all legal speed limits;
- not drive whilst under the influence of any drugs, nor any medication which may affect your ability to drive. This includes both prescription and non-prescription medication. If taking any medication always check with your medical practitioner or pharmacist that it is safe to drive;
- not consume any alcohol before or during contracted journeys (or at any time beforehand on the same day) including drinking without exceeding the legal alcohol limit for driving; and
- use UHF channel 12 if transporting aggregate, UHF channel 39 for Pug Mill road base activities and internal UHF channels as instructed.

2. Chain of Responsibility

Under Chain of Responsibility Legislation, you must:

- take the required rest breaks;
- record working and rest hours;
- ensure your vehicle does not exceed mass limits;
- ensure your vehicle does not exceed dimension limits;
- loads are appropriately restrained by ground controlled methods (i.e. automatic tarp);
- do not exceed the legal speed limits; and
- do not tamper with, or remove any equipment required to be fitted to the vehicle.

3. On-Site Responsibilities

When operating your vehicle within the Metromix Teralba Quarry, you must:

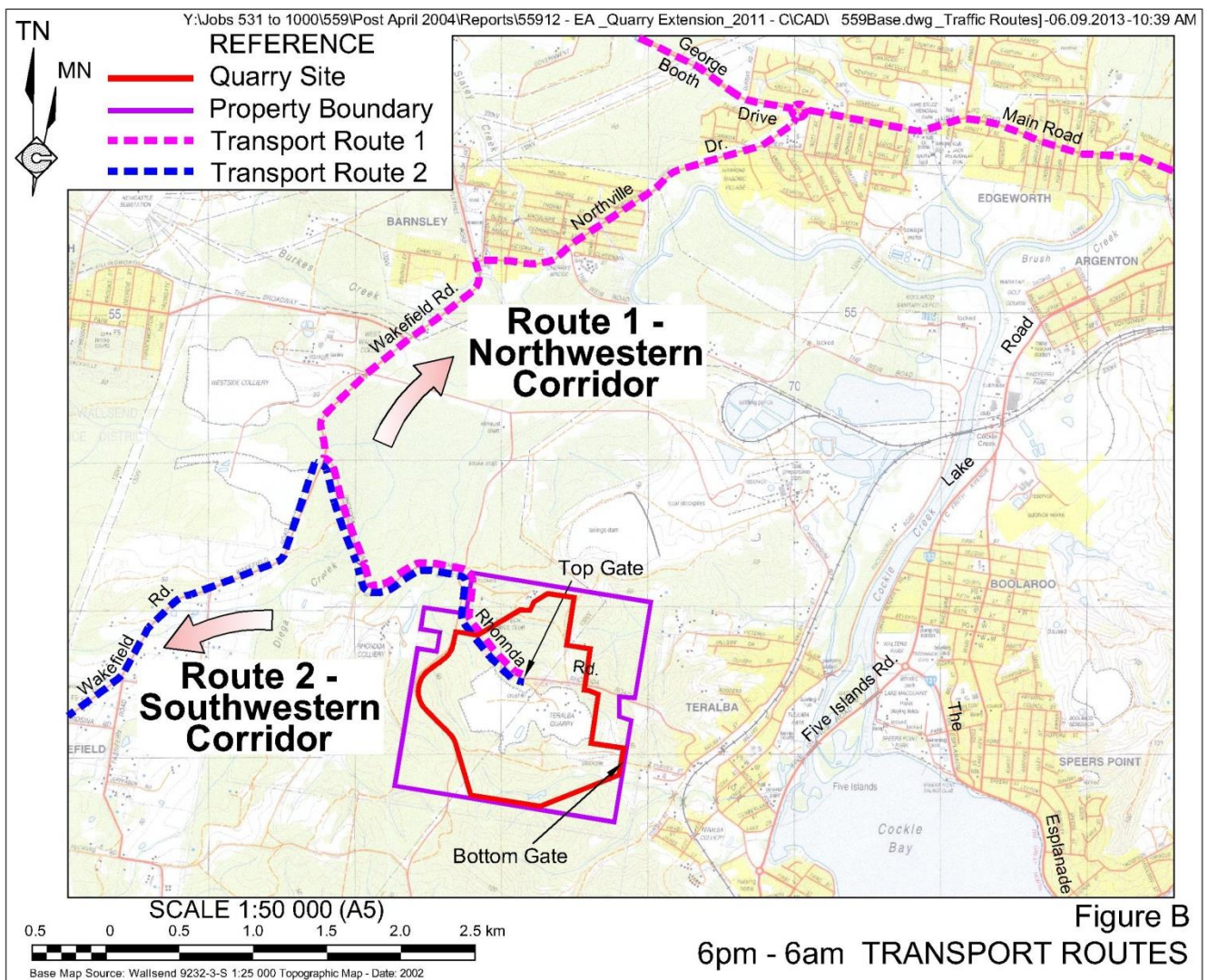
- obey all safety and directional signage or instructions given by Metromix employees;
- not exceed 30 km/hr on internal roads;
- not smoke on site;
- WEAR a seat belt at all times;

3. On-Site Responsibilities (Cont'd)

- be aware of situations such as internal road conditions or minor maintenance that could produce excessive noise during the night;
- wear the following Personal Protective Equipment (PPE) if you exit your vehicle, other than at the weighbridge;
 - ✓ Hard hat
 - ✓ Safety glasses
 - ✓ Safety boots
 - ✓ Hi-visibility clothing or vest
- when exiting the quarry, use Truck Wheel Wash; and
- report any incident/near miss to quarry management/nominee.

4. Approved Travel Routes and Approved Hours

Metromix has approval to only cart raw materials from the Teralba Quarry between 6:00pm and 6:00am on two approved transport routes (see **Figure B**). At no time during this period are you allowed to travel through Teralba.



Route 1 – Northwestern Corridor: Westwards along Rhondda Rd, and then northwards along Wakefield Rd and Northville Rd to George Booth Drive/Main Road roundabout.

- Do not use engine brakes to reduce speed at **any** point along the route.
- Be aware of the tight bend on the northbound approach to the Pistol Club entrance (**Photo**).



Bend Preceding Pistol Club Access

- Be aware at the roundabout at Barnsley for pedestrian activity as the road changes from a rural Wakefield Rd onto the arterial Northville Drive (**Photo**).



Barnsley Roundabout

Route 2 – Southwestern Corridor: Westwards along Rhondda Rd, and then southwards along Wakefield Rd to the Palmers Rd.

- Do not use engine brakes to reduce speed at **any** point along the route.
- Be aware of the tight bend on the northbound approach to the Pistol Club entrance.
- Do not exceed speed limits.



Bend Preceding Pistol Club Access

5. Complaints

- Local residents, motorists, cyclists and/or pedestrians may lodge complaints against your vehicle or on-road driving behaviour. If Metromix receives any complaint of this nature, it will be investigated by Quarry Management and the complainant will be informed about the actions taken.
- If your vehicle or on-road driving behaviour is confirmed the cause of the complaint, you will face disciplinary action by Quarry Management and your employer will be informed.

6. Disciplinary Action

You will face disciplinary action if you fail to meet the requirements in this Code of Conduct or Metromix receives a confirmed community complaint regarding your vehicle or on-road driving behaviour.

The disciplinary procedure will involve the following:

- First instance – you will receive a verbal warning, including a verbal notification to your employer.
- Second instance – you will receive a written warning, including a written notification to your employer.
- Third instance – you will be dismissed from site, including a review of your employer's contract/agreement with Metromix.

I agree to abide with this Code of Conduct

Authorisation by Metromix

Signed:

Signed:

Name (Print):

Name (Print):

Company:

Date:

Date:

Appendix 2 Truck Movements – Proposed Reporting Forms

This page has intentionally been left blank

Table 2A: Number of Laden Trucks – 6:00pm to 5:00am

TERALBA QUARRY		Month:			
	Daily Total	Westwards		Eastwards	
		Daily	Max Hourly	Daily	Max Hourly
Limits*	66	66	6	0	0
Actuals					
1					
2					
3					
4					
5					
6					
7					
8					
9					
10					
11					
12					
13					
14					
15					
16					
17					
18					
19					
20					
21					
22					
23					
24					
25					
26					
27					
28					
29					
30					
31					

* Condition 2(9) of PA 10_0183

Exceedance of Limit

Table 2B: Number of Laden Trucks – 5:00am to 6:00am

TERALBA QUARRY		Month:	
	Westwards		Eastwards
	Max Hourly		Max Hourly
Limits*	12		0
Actuals			
1			
2			
3			
4			
5			
6			
7			
8			
9			
10			
11			
12			
13			
14			
15			
16			
17			
18			
19			
20			
21			
22			
23			
24			
25			
26			
27			
28			
29			
30			
31			

*Condition 2(9) of PA 10_0183

 Exceedance of Limit

Table 2C: Number of Laden Trucks – 6:00am to 7:00am

TERALBA QUARRY		Month:	
		Westwards**	Eastwards**
		Max Hourly	Max Hourly
Limits*		28	8
Actuals			
1			
2			
3			
4			
5			
6			
7			
8			
9			
10			
11			
12			
13			
14			
15			
16			
17			
18			
19			
20			
21			
22			
23			
24			
25			
26			
27			
28			
29			
30			
31			

* Condition 2(9) of PA 10_0183

** Combined Maximum hourly No. of laden trucks = 28

 Exceedance of Limit

Table 2D: Number of Laden Trucks – 7:00am to 6:00pm

TERALBA QUARRY		Month:			
	Daily Total	Westwards		Eastwards	
		Daily	Max Hourly	Daily	Max Hourly
Limits*	305	220	20	85	8
Actuals					
1					
2					
3					
4					
5					
6					
7					
8					
9					
10					
11					
12					
13					
14					
15					
16					
17					
18					
19					
20					
21					
22					
23					
24					
25					
26					
27					
28					
29					
30					
31					

* Condition 2(9) of PA 10_0183

 Exceedance of Limit

Table 2E: Total Number of Laden Trucks

TERALBA QUARRY		Month:	
	Daily Total	Westwards Daily	Eastwards Daily
Limits	326	241	85
Actuals			
1			
2			
3			
4			
5			
6			
7			
8			
9			
10			
11			
12			
13			
14			
15			
16			
17			
18			
19			
20			
21			
22			
23			
24			
25			
26			
27			
28			
29			
30			
31			

* Condition 2(9) of PA 10_0183

 Exceedance of Limit

This page has intentionally been left blank

Appendix 3 Consultation Record

This page has intentionally been left blank

From: Development hunter <Development.hunter@rms.nsw.gov.au>
Sent: Saturday, 12 January 2019 1:46 PM
To: Nicholas Warren
Cc: bills@metromix.com.au
Subject: RMS Response - RE: Request for Review: MP10_0183 Teralba Quarry - DPE Request for RMS Review of Updated TMP

Hi Nick,

Thank you for your email requesting Roads and Maritime review of your updated Transport Management Plan (TMP) dated December 2018. The email was originally sent to our Northern office, so the email address for Mo Yunusa does not display for our reply.

Roads and Maritime request that the below information be included in the TMP:

- Type/size of trucks accessing the site.
- The Drivers Code of Conduct to include information regarding the onsite UHF call channel.

Please forward a copy of the finalised TMP to Roads and Maritime for our record.

Regards,
Kate

Land Use Assessment Hunter
Network & Safety Hunter | Regional & Freight
T 02 4908 7688
development.hunter@rms.nsw.gov.au
www.rms.nsw.gov.au
Every journey matters

Roads and Maritime Services
Level 8, 266 King St, Newcastle NSW 2300
Locked Bag 2030, Newcastle NSW 2300

From: Nicholas Warren [mailto:nick@rwcorkery.com]
Sent: Monday, 10 December 2018 3:26 PM
To: Development Northern
Cc: Bill Sanderson (bills@metromix.com.au); Mo Yunusa
Subject: 559 - Teralba Quarry - Draft Updated Transport Management Plan

Greetings,

Metromix has recently received approval for the minor modification to Project Approval 10_0183 for the Teralba Quarry, located at Teralba within the Lake Macquarie Local Government Area. In accordance with Condition 5 of Schedule 5 of PA 10_0183, Metromix must review all environmental management plans following a modification to the consent.

Metromix has identified a range of mostly clerical edits required for the Transport Management Plan for the Quarry. Attached is an updated version of the Transport Management Plan, with all edits tracked for ease of review. DPE has asked that Metromix consult with Roads and Maritime Services on these updates in accordance with Condition 44 of Schedule 3 of PA 10_0183.

It would be appreciated if RMS could undertake a review of the plan and provide any comments to myself, Bill Sanderson and Mo Yunusa at your earliest convenience.

From: Glen Mathews <gmathews@lakemac.nsw.gov.au>
Sent: Friday, 11 October 2019 4:33 PM
To: Nicholas Warren
Subject: RE: 559 - Teralba Quarry - Management Plan

Hi Nicholas,

I have received a response for air quality and blast management as below:

Blast Management Plan

I have reviewed the report titled *Metromix Pty Limited, Blast Management Plan (Incorporating a Blast Monitoring Program), November 2016* prepared by Metromix.

The report was initially approved by the Secretary's nominee Howard Reed on 10 October 2013.

The changes to this plan are mostly administrative such as the project approval reference, the Environmental Protection Licence conditions and the relevant legislation. There is also the inclusion of blast monitoring data from 2013 to 2017.

As a result, there are no objections to the updated report.

Air Quality Management Plan

I have reviewed the report titled *Metromix Pty Limited, Air Quality Management Plan (Incorporating Weather Monitoring), February 2019* prepared by Metromix.

The report was initially approved by the Secretary's nominee Howard Reed on 10 October 2013.

The changes to this plan are mostly administrative such as the project approval reference. There is also the inclusion of historic air quality monitoring results from 2013 to 2017.

In relation to traffic management plan the following comment has been received:

Roads maintenance and asset implications

In the Transport Management Plan Page 15 under Clause 4.3 Statement of Commitments –Commitments Table 4.3 - Item 9.4

"Provide a contribution to Lake Macquarie City Council during the ongoing life of the quarry if a suitable project approval is granted. "

In accordance with Lake Macquarie City Council's Contributions Plan- Toronto Contributions Catchment 2016- Part 4 Community Infrastructure and Contributions Item 4.2 Road Haulage - Council will seek road haulage contributions from developments that generate heavy vehicle movements as a significant and integral component of their operations.

A range of factors will be taken into consideration when calculating the haulage contribution rate for each applicable development including:

- The affected road sections and pavement types
- The rehabilitation costs, routine maintenance costs and programmed maintenance costs
- Existing traffic load quantified in terms of the number of equivalent standard axle loads
- Proposed increase in traffic load as a result of the development proposal quantified in:-
 - ✓ terms of ESA
 - ✓ Quantity of goods or materials proposed to be transported along nominated haulage routes as specified in the development proposal.

Council will calculate the haulage contribution rate for each applicable development using the formula as described in the plan, that could be levied on a tonne per kilometre or average rate per tonne that may leave the facility. A review of the agreed levy must be allowable based on any changes to the operation of the plant and impact on surrounding road network.

Truck configuration leaving the facility affects the ESA determination for the haulage levy and details on type and size of trucks may need further clarification. Should new markets, for the products be found, then this will influence production, routes and truck configuration.

Previous discussions held with Metromix regarding the proposed levy will require further work to enable the proposed payment structure to proceed.

All truck movements are to adhere to the approved routes. No truck movements in a Northerly direction along Racecourse Road shall be permitted that runs off Route 3 and Route 4.

Kind Regards,

Glen Mathews

Senior Development Planner



T 02 4921 0399 M 0439 647 504
E gmathews@lakemac.nsw.gov.au

lakemac.com.au



From: Nicholas Warren <nick@rwcorkery.com>

Sent: Tuesday, 8 October 2019 10:26 AM

To: Glen Mathews <gmathews@lakemac.nsw.gov.au>

Cc: Mo Yunusa <MoY@metromix.com.au>; Melissa Anderson <Melissa.Anderson@planning.nsw.gov.au>

Subject: RE: 559 - Teralba Quarry - Management Plan

Hi Glen,

I thought to follow up on the Teralba Quarry Air Quality Management Plan, Blast Management Plan and the Transport Management Plan comments from Council.

Please be advised that due to the length of time taken to receive comments, if we do not receive feedback by the end of this week, we will proceed to submit the plans to DPIE for final approval.

Metromix are operating in accordance with approved plans, however have been waiting almost 12 months since these plans were first submitted to Council.

Regards,

Nick

Nick Warren

Principal Environmental Consultant

B.Sc., M. Bus., M. Env.Sc.

Phone: 02 9985 8511

Mobile: 0437 635 975

Email: nick@rwcorkery.com

RW Corkery & Co Pty Limited

Geological and Environmental Consultants



This message is intended for the addressee named and may contain confidential/privileged information. If you are not the intended recipient, please delete it and notify the sender. Any confidentiality or privilege between R. W. Corkery & Co. Pty Limited and Client is not waived or lost because this email has been sent to you by mistake. You should scan any included files for viruses.

From: Glen Mathews <gmathews@lakemac.nsw.gov.au>
Sent: Friday, 6 September 2019 11:57 AM
To: Nicholas Warren <nick@rwcorkery.com>
Cc: Mo Yunusa <MoY@metromix.com.au>
Subject: RE: 559 - Teralba Quarry - Management Plan

Hi Nick,

I have received feed back from Council's waste section yesterday identifying:

Waste Storage:

- *The plan does not detail waste storage areas on the site to demonstrate that there is sufficient, safely accessible storage space (including routes between waste sources and storage) and communicate where each waste type is to be stored.*

Waste Collection:

- *The waste management plan and transport management plan do not detail waste collection vehicle access routes, turn circles and clearances. Although the transport plan mentions contractors must be provided with competence training, it does not clarify whether this applies to contracted waste collection vehicles.*

Air quality have been in contact and a reviewing currently and I will chase traffic again for their comments on the transport management plan.

Kind Regards,

Glen Mathews
Senior Development Planner



T 02 4921 0399 M 0439 647 504
E gmathews@lakemac.nsw.gov.au
lakemac.com.au

From: Nicholas Warren <nick@rwcorkery.com>
Sent: Friday, 6 September 2019 11:44 AM
To: Glen Mathews <gmathews@lakemac.nsw.gov.au>
Cc: Mo Yunusa <MoY@metromix.com.au>
Subject: FW: 559 - Teralba Quarry - Management Plan

Hi Glen,

Can you please give me an update on progress with this review?

Please let me know if you are not intending to review these plans so we can let the Department of Planning know that they can complete their review.

Regards,
Nick

Nick Warren
Principal Environmental Consultant
B.Sc., M. Bus., M. Env.Sc.
Phone: 02 9985 8511
Mobile: 0437 635 975
Email: nick@rwcorkery.com

DPIE REVIEW OF REVISED TERALBA QUARRY MANAGEMENT PLANS (DECEMBER 2019)

Page 1 of 2

DPIE Comment	Response	Section
Comments Generally Applying to all MPs submitted 15 October 2019		
1. Please include the direct consultation with agencies required by conditions of approval in an appendix to each MP. I appreciate that this consultation has been provided in emails accompanying the lodged MPs, but the Department wishes that these comments be included in a single document (the MP). This allows the reviewing officer to check that comments received have not been overlooked, diminished or ignored. It also provides the Company a means to establish compliance with this component of a condition of approval at the time of an environmental audit.	Adjusted as noted	Various
2. Most of the MPs do not correctly describe the effect of modification of the Project Approval. The exception to this is the Waste MP. When a Project Approval or consent is modified, the project approval, as modified, becomes the legal project approval. This means there isn't project approval PA 10_0183 and PA10_0183 MOD 1. There is only PA_0183 which was approved on 22 February 2013 and modified on 16 April 2018. References throughout the MPs to PA 10_0183 MOD 1 should be removed and the surrounding text reconsidered to see if it still makes sense after the MOD 1 component is removed. If you need any further explanation about this matter, please contact me.	Adjusted as noted	Various
3. The name of our Department has changed (again!). We are now the Department of Planning, Infrastructure and Environment or DPIE. Please update all uses in the MPs, including the "Commonly Used Acronyms".	Adjusted as noted	Various
4. The name of the Division of Resources and Energy has changed to Division of Resources and Geosciences (or DRG) with DPIE.	Adjusted as noted	Various
5. Among the matters changed by MOD 1, were the introduction of change to the definitions of "Incident" and "Material harm to the environment". This means that the procedures in the MPs that relate to Incident reporting and subsequent reporting must be consistent with these definitions and the requirements of condition 7 and 7B of Schedule 5. An incident includes an exceedance of a criteria in the Project Approval and reporting needs to include the Department and within the timeframes and methods set out in conditions 7 and 7B.	Adjusted as noted across each plan.	Various

DPIE REVIEW OF REVISED TERALBA QUARRY MANAGEMENT PLANS (DECEMBER 2019) (Cont'd)

Page 2 of 2

DPIE Comments	Response	Section
Transport Management Plan (TMP)		
6. Please have full regard to the general comments 1 to 5 , as relevant to this TMP.	Adjusted as noted	Various
7. Page 11, fourth paragraph. " <i>ridged</i> " needs to be replaced with " <i>rigid</i> " x2.	Adjusted as noted	2
8. Page 12, second dot point. In addition to the material in this portion of the TMP, the main reason why the requirement for Metromix to provide flashing lights at specific schools is that the NSW State government decided to install flashing light warning signs at all schools and the requirement for the condition for Metromix to do so became redundant.	Text in this section adjusted to reflect the information you have provided – thank you.	3.1