



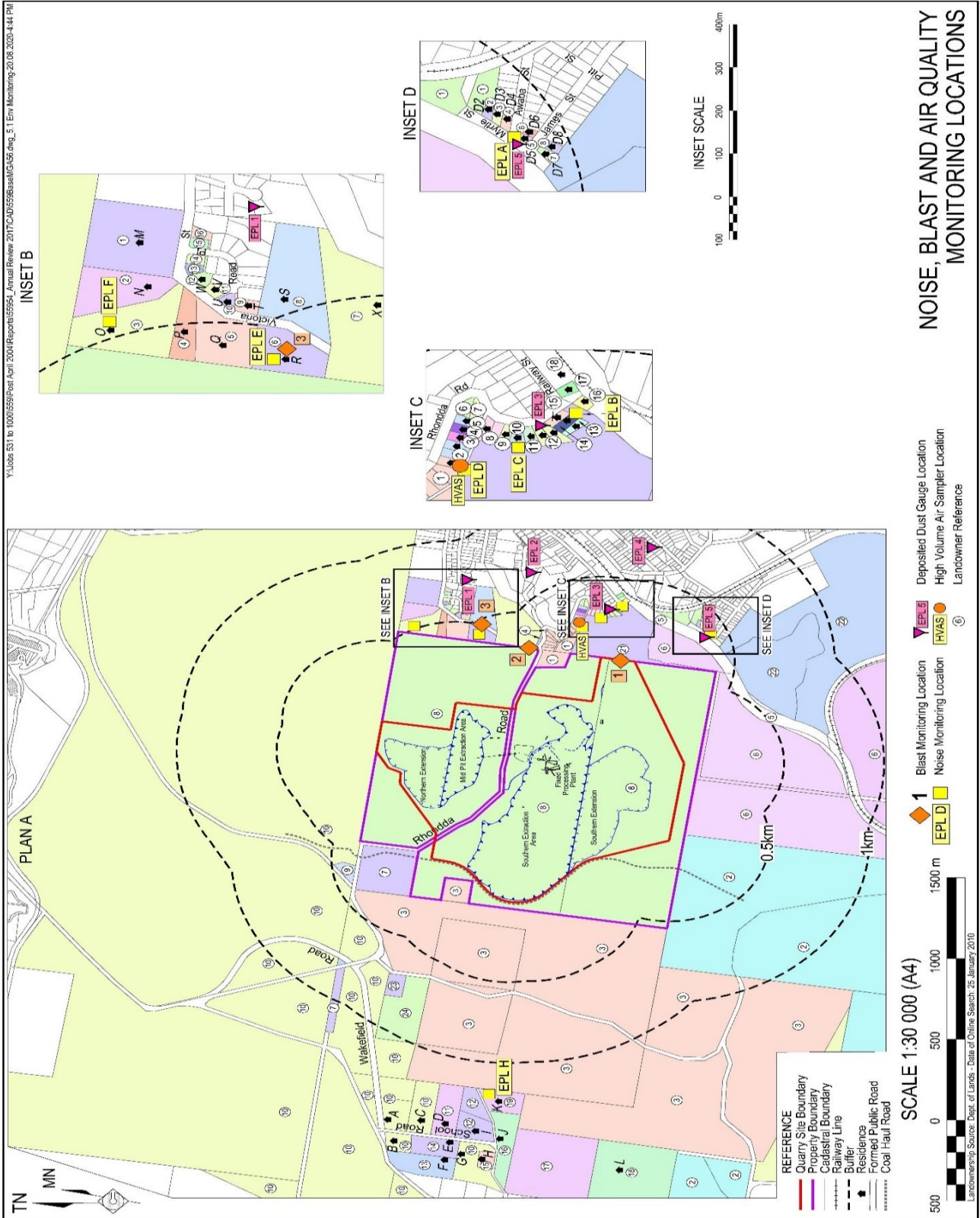
# Teralba Quarry Environmental Monitoring Summary

July 2021

<b>Environmental Protection Licence (EPL):</b>	536
<b>Licensee:</b>	Metromix Pty Limited
<b>Licensee Address:</b>	PO Box 1295 Parramatta, NSW 2124
<b>Premises:</b>	Metromix Pty Limited Teralba Quarry Rhondda Road Teralba, NSW 2284
<b>Licensee Website:</b>	<a href="https://www.metromix.com.au/">https://www.metromix.com.au/</a>
<b>Licensee Website - Monitoring Results:</b>	<a href="https://www.metromix.com.au/resources/#quarry">https://www.metromix.com.au/resources/#quarry</a>
<b>EPA Public Register:</b>	<a href="https://www.epa.nsw.gov.au/licensing-and-regulation/public-registers">https://www.epa.nsw.gov.au/licensing-and-regulation/public-registers</a>
<b>Prepared by:</b>	R. W. Corkery & Co.
<b>Sample Period:</b>	July 2021
<b>Data Last Received</b>	25 August 2021
<b>Date of Report</b>	26 August 2021

## Contents

- 1 Deposited Dust
- 2 Particulate Matter (PM<sub>10</sub>)
- 3 Water
- 4 Meteorological Conditions
- 5 Blasting
- 6 Waste



**Deposited Dust**

Sample Period Start: 2/07/2021  
Sample Period End: 1/08/2021  
Sample Frequency: 30 ± 2 days  
Sample Collected By: Metromix - GS  
Date Received by Laboratory: 2/08/2021  
Date Results Received by Metromix: 25/08/2021

EPA Identification No.	Location	Criteria (g/m <sup>2</sup> /month)	Insoluble Solids (g/m <sup>2</sup> /month)	Ash Fraction (g/m <sup>2</sup> /month)	% Ash Fraction
1	Hillside Crescent	4.0	0.1	0.1	100%
8	Rodgers Street	4.0	0.7	0.4	57%
9	Rhonda Road	4.0	1.8	0.7	39%
11	Myrtle Street	4.0	0.5	0.3	60%
23	York Street	4.0	0.7	0.4	57%

**Comments**

All deposited dust results remained below the approved criteria for the sample period.

## Deposited Dust - Year to Date

	Rhondda Road			Myrtle Street			Hillside Crescent			Rodgers Street			York Street		
	Total Insoluble Solids	Ash Fraction	% Ash	Total Insoluble Solids	Ash Fraction	% Ash	Total Insoluble Solids	Ash Fraction	% Ash	Total Insoluble Solids	Ash Fraction	% Ash	Total Insoluble Solids	Ash Fraction	% Ash
Units	g/m <sup>2</sup> /month	g/m <sup>2</sup> /month		g/m <sup>2</sup> /month	g/m <sup>2</sup> /month		g/m <sup>2</sup> /month	g/m <sup>2</sup> /month		g/m <sup>2</sup> /month	g/m <sup>2</sup> /month		g/m <sup>2</sup> /month	g/m <sup>2</sup> /month	
<b>EPA Approved Level</b>	<b>4.0</b>			<b>4.0</b>			<b>4.0</b>			<b>4.0</b>			<b>4.0</b>		
January	0.7	0.4	57	1.0	0.5	50	0.7	0.3	43	0.7	0.4	57	1.2	0.7	58
February	0.3	0.2	67	0.4	0.2	50	0.4	0.2	50	0.5	0.3	60	0.4	0.4	100
March	0.6	0.2	33	0.5	0.2	40	0.8	0.2	25	0.5	0.2	40	0.9	0.5	56
April	0.3	0.2	67	0.2	0.1	50	0.4	0.1	25	0.2	0.2	100	0.4	0.3	75
May	0.3	0.1	33	0.4	0.3	75	0.4	0.2	50	0.2	0.1	50	0.8	0.6	75
June	0.4	0.2	50	0.3	0.2	67	0.1	0.1	100	0.2	0.2	100	0.5	0.4	80
July	1.8	0.7	39	0.5	0.3	60	0.1	0.1	100	0.7	0.4	57	0.7	0.4	57
August															
September															
October															
November															
December															
<b>Annual Average</b>	<b>0.6</b>	0.3	49.4	<b>0.5</b>	0.3	56.0	<b>0.4</b>	0.2	56.1	<b>0.4</b>	0.3	66.3	<b>0.7</b>	0.5	71.6
<b>Annual Maximum</b>	<b>1.8</b>	0.7	67.0	<b>1.0</b>	0.5	75.0	<b>0.8</b>	0.3	100.0	<b>0.7</b>	0.4	100.0	<b>1.2</b>	0.7	100.0
<b>Annual Minimum</b>	<b>0.3</b>	0.1	33.0	<b>0.2</b>	0.1	40.0	<b>0.1</b>	0.1	25.0	<b>0.2</b>	0.1	40.0	<b>0.4</b>	0.3	56.0

**Particulate Matter (PM<sub>10</sub>)**

Sample Location: EPA 3 - Rodgers Road  
 Sample Frequency: 6 days

Date Sample Taken (24-hr)	Collected by	Date Results Received	PM <sub>10</sub> µg/m <sup>3</sup>	Monthly Average Criteria (µg/m <sup>3</sup> )	Annual Average Criteria (µg/m <sup>3</sup> )
2/07/2021	CBased - JP	15/07/2021	9	50	
8/07/2021	CBased - JK	29/07/2021	6	50	
14/07/2021	CBased - JP	27/07/2021	8	50	
20/07/2021	CBased - MB	29/07/2021	6	50	
26/07/2021	CBased - MB	5/08/2021	9	50	
<b>Monthly Average</b>			7.5		25/30*

\*Project Approval (PA 10\_0183) outlines the annual average PM<sub>10</sub> criteria to be 30µg/m<sup>3</sup>. However, EPL 536 Condition R4.5a) requires that the air quality monitoring data is assessed against the Air Impact Assessment Criteria outlined in EPA's *Approved Methods for the Modelling and Assessment of Air Pollutants in NSW*. The most up to date version of this guideline was published in 2017 and outlines the annual average PM<sub>10</sub> criteria to be 25µg/m<sup>3</sup>. Metromix has considered both criteria for its review of particulate matter monitoring.

**Comments**

All PM<sub>10</sub> results remained below the approved criteria for the sample period.

Particulate Matter (PM<sub>10</sub>) - Year to Date

Date	PM <sub>10</sub> (µg/m <sup>3</sup> )	Monthly Average (µg/m <sup>3</sup> )	Year to Date Average (µg/m <sup>3</sup> )	24-Hr Criteria (µg/m <sup>3</sup> )	Comments
3/01/2021	10		10.0	50	
9/01/2021	5		7.5	50	
15/01/2021	37		17.3	50	
21/01/2021	18		17.5	50	
27/01/2021	20	18.0	18.0	50	
2/02/2021	11		16.8	50	
8/02/2021	6		15.2	50	
14/02/2021	12		14.8	50	
20/02/2021	7		14.0	50	
26/02/2021	14	10.0	14.0	50	
4/03/2021	9		13.5	50	
10/03/2021	14		13.6	50	
16/03/2021	8		13.1	50	
22/03/2021	6		12.6	50	
28/03/2021	8	9.0	12.3	50	
3/04/2021	5		11.9	50	
9/04/2021	10		11.7	50	
15/04/2021	17		12.0	50	
21/04/2021	14		12.1	50	
27/04/2021	10	11.1	12.0	50	
3/05/2021	11		12.0	50	
9/05/2021	10		11.9	50	
15/05/2021	8		11.7	50	
21/05/2021	10		11.6	50	
27/05/2021	2	8.0	11.2	50	
2/06/2021	15		11.4	50	
8/06/2021	12		11.4	50	
14/06/2021	6		11.2	50	
20/06/2021	12		11.2	50	
26/06/2021	2	9.2	10.9	50	
2/07/2021	9		10.8	50	
8/07/2021	6		10.7	50	
14/07/2021	8		10.6	50	
20/07/2021	6		10.5	50	
26/07/2021	9	7.5	10.4	50	

<b>Minimum</b>	1.5
<b>Maximum</b>	37
<b>Average</b>	10.4
<b>Standard Deviation</b>	6.2
<b>24-hr Criteria</b>	50
<b>Number of Exceedences</b>	0
<b>Annual Average Criteria</b>	25/30*
<b>Annual Average Criteria Exceeded</b>	No
*See explanation on previous page.	

**Water****Water Monitoring****EPL Point 4 - Monthly Monitoring**

Date	Time	Sampled By	Date Results Received		pH	EC	TSS	Oil & Grease	Comments
				Units	pH Units	µS/cm	mg/L	mg/L	
				EPL Criterion*	6.5-8.5	NA	<50	10	
				ANZECC Water Quality Limits	6.5-8.5	125-2200	<50	-	
12/07/2021	00:00am	Metromix - AL	19/07/2021		7.32	1970	<5	<5	-

**EPL Point 5 - Monitoring Within 12 Hours of Commencing Discharge**

Date	Time	Sampled By	Date Results Received		pH	EC	TSS	Oil & Grease	Comments
				Units	pH Units	µS/cm	mg/L	mg/L	
				EPL Criterion*	6.5-8.5	NA	<50	10	
				ANZECC Water Quality Limits	6.5-8.5	125-2200	<50	-	
No discharge occurred at this location and therefore no monitoring was required									

**EPL Point 6 - Monthly Monitoring**

Date	Time	Sampled By	Date Results Received		pH	EC	TSS	Oil & Grease	Comments
				Units	pH Units	µS/cm	mg/L	mg/L	
				EPL Criterion*	6.5-8.5	NA	<50	10	
				ANZECC Water Quality Limits	6.5-8.5	125-2200	<50	-	
No discharge occurred at this location and therefore no monitoring was required									

**EPL Point 7 - Monthly Monitoring**

Date	Time	Sampled By	Date Results Received		pH	EC	TSS	Oil & Grease	Comments
				Units	pH Units	µS/cm	mg/L	mg/L	
				EPL Criterion*	6.5-8.5	NA	<50	10	
				ANZECC Water Quality Limits	6.5-8.5	125-2200	<50	-	
No discharge occurred at this location and therefore no monitoring was required									

**Flow Meter Records**

EPA Identified Point	Location	Description	Sample Period	Daily Average Flow ML	Monthly Total Flow ML
4	Adit Dam	Adit Dam to Creek (off site)	1/07/2021 to 2/08/2021	0.94	29.06
5	Dam B	Discharge from Dam B (from Quarry)	1/07/2021 to 2/08/2021	N/A	0
4	Adit Dam	Water pumped from Adit Dam to Dam G (processing use)	1/07/2021 to 2/08/2021	N/A	92.90

**Comments**

All water monitoring results remained within the approved criteria levels during the monitoring period.

## Water - Year to Date

## EPL Point 4 : Monthly Monitoring

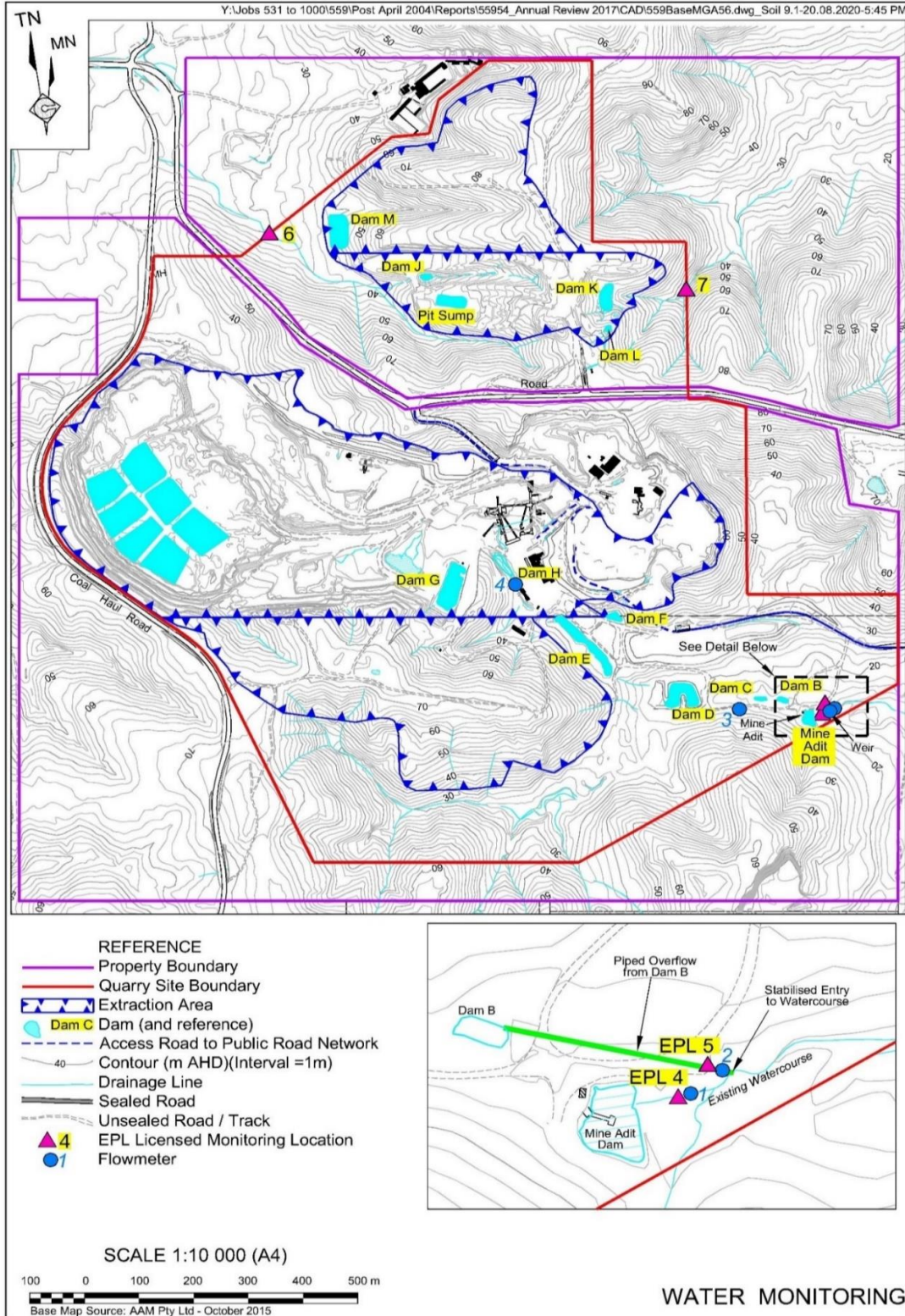
	pH	EC	TSS	Oil & Grease	Comments
Units	pH Units	µS/cm	mg/L	mg/L	-
EPL Criterion*	6.5-8.5	NA	<50	10	-
ANZECC Water Quality Limits	6.5-8.5	125-2200	<50	<5	-
January	7.18	1890	6	<5	-
February	7.11	1880	<5	<5	-
March	7.16	1800	8	6	-
April	7.07	1600	6	<5	-
May	7.12	1680	8	<5	-
June	7.49	1940	26	<5	-
July	7.32	1970	<5	<5	-
August					
September					
October					
November					
December					

## EPL Point 5 : Monitoring During Discharge

	pH	EC	TSS	Oil & Grease	Comments
Units	pH Units	µS/cm	mg/L	mg/L	-
EPL Criterion*	6.5-8.5	NA	<50	10	-
ANZECC Water Quality Limits	6.5-8.5	125-2200	<50	-	-
4/01/2021	7.24	862	6	<5	-
1/02/2021	7.40	921	<5	<5	-
11/02/2021	7.32	1140	<5	<5	-
1/04/2021	6.67	793	<5	<5	-
3/05/2021	6.83	771	<5	<5	-



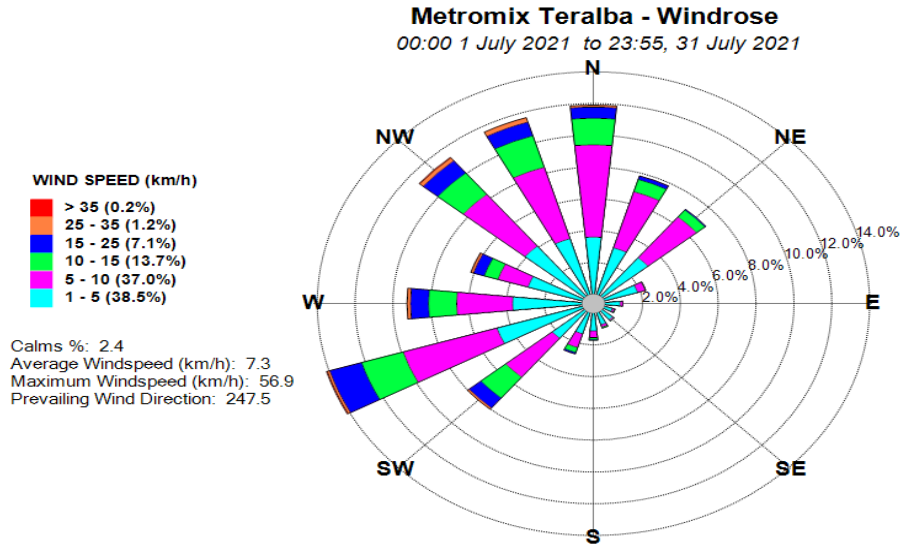




### Meteorological Conditions

Monitoring Location: Mid-Pit Entrance  
 Monitoring Frequency: Continuous

#### Windrose



#### Monthly Summary

Date	Mean Wind Direction (°)	Mean Wind Speed (km/h)	Daily Rainfall (mm)	Mean Sigma Theta	Max Temperature (°C) at 2m	Min Temperature (°C) at 2m
01/07/21	183	3.2	2.6	23.8	15.2	8.6
02/07/21	182	5.4	0.2	30.2	20	10.8
03/07/21	242	4.7	0	26.2	20	9.4
04/07/21	252	5.0	0	24.8	16	6
05/07/21	264	5.0	0	29.7	16.7	5.4
06/07/21	253	4.2	0	24.7	16.6	5.6
07/07/21	210	2.6	0	30.2	16.2	5.8
08/07/21	171	3.3	0	21.7	16.8	7.4
09/07/21	211	5.6	4	21.8	12.4	8.6
10/07/21	236	12.9	9.6	22.2	13.8	10.4
11/07/21	214	5.8	1.6	30.1	17.2	9.0
12/07/21	176	4.9	0.4	21.7	17.8	7.2
13/07/21	239	6.6	1.2	26.2	19.2	8.6
14/07/21	108	6.3	0.2	17.9	15.0	8.4
15/07/21	141	6.3	1	25.8	20.2	12.4
16/07/21	245	11.4	0.6	42.6	17.8	12.2
17/07/21	267	13.7	0	45.0	14.4	10.6
18/07/21	258	7.0	0	36.5	18.6	9.0
19/07/21	263	7.0	0	38.2	14.4	6.2
21/07/21	253	8.2	0	46.1	14.6	7.2
21/07/21	236	9.6	0	25.6	15.0	8.8
22/07/21	193	5.2	0	22.4	17.4	4.4
23/07/21	144	6.1	0	29.8	19.0	8.8
24/07/21	224	10.3	0	45.2	18.6	10.4
25/07/21	251	13.2	0	41.2	15.2	9.2
26/07/21	249	9.7	0	39.5	19.8	9.2
27/07/21	196	8.7	0	24.0	20.4	11.6
28/07/21	263	12.4	1	44.2	24.8	13.2
29/07/21	246	6.9	0	22.7	18.2	9.0
30/07/21	195	8.4	0	22.0	19.6	8.2
31/07/21	120	7.5	0	20.9	22.6	5.5

**Meteorological Conditions - Year to Date**

Monitored Parameter	Jan	Feb	Mar	Apr	May	Jun	Jul	Aug	Sep	Oct	Nov	Dec	Annual
Total Rainfall (mm)	130.0	135.0	362.8	24.0	25.0	55.2	22.4						
Average Minimum Temperature (°C) at 2m	18.1	18.2	17.2	13.1	11.6	9.1	8.6						
Average Maximum Temperature (°C) at 2m	28.6	26.4	25.5	23.3	20.7	17.4	17.5						
Average Minimum Temperature (°C) at 10m	18.5	18.5	17.5	13.9	12.3	9.7	9.2						
Average Maximum Temperature (°C) at 10m	27.3	25.4	24.7	22.5	20.0	16.9	17.0						
Average Sigma Theta	30.9	32.2	31.9	27.3	27.0	28.3	29.8						
Average Solar Radiation (W/m <sup>2</sup> )	214.6	183.9	137.7	148.3	104.6	88.7	101.7						
Average Relative Humidity (%)	71.7	77.0	75.0	66.0	68.0	69.0	62.0						

**Blasting**

Monitoring Frequency: Each Blast  
 Blast Monitoring Completed By: Orica (Blast 1 to 12)  
 MAXAM (Blast 13)

Shot #	Day	Month	Time	Location	Location 1		Location 2		Location 3		Comments
					Overpressure dB(L)	Vibration mm/s	Overpressure dB(L)	Vibration mm/s	Overpressure dB(L)	Vibration mm/s	
1	22	January	11:52:04	Stage 2A	101.7	0.2	NT	NT	NM	NM	The trigger parameters for the blast monitors were reduced to 100dB(L) and 0.13mm/s to assist in obtaining a reading. An additional monitor was placed halfway between Blast monitor 1 (McEwen St) and the blast. This monitor recorded 111.7dB(L) overpressure and 0.35mm/s vibration.
2	11	February	14:50:06	Stage 2A	105.6	0.37	102.3	0.08	NM	NM	
3	17	February	12:50:00	Stage 2A	109.7	1.43	NT	NT	NM	NM	
4	11	March	13:42:00	Stage 2A	101.5	0.24	NT	NT	NM	NM	The trigger parameters for the blast monitors were set to 100dB(L) and 0.13mm/s to assist in obtaining a reading. An additional monitor was placed halfway between Blast monitor 1 (McEwen St) and the blast. This monitor recorded 110.6dB(L) overpressure and 0.55mm/s vibration. The Rhondda Road monitor was tested prior to blasting and recorded readings of 102.2dB(L)(via clapping) and 7.31mm/s (via stomping).
6A & 6B	7	April	14:56:49	Stage 2A	NT	NT	111.2	0.16	NM	NM	The trigger parameters for the blast monitors were set to 100dB(L) and 0.13mm/s to assist in obtaining a reading.
5	14	April	13:36:13	Stage 1C	106.3	0.3	100.8	0.05	NM	NM	The trigger parameters for the blast monitors were set to 100dB(L) and 0.13mm/s to assist in obtaining a reading. An additional monitor was placed halfway between Blast monitor 1 (McEwen St) and the blast. This monitor recorded 113.3dB(L) overpressure and 0.54mm/s vibration.
7	5	May	11:44:23	Stage 2A	NT	NT	101	0.12	NM	NM	The trigger parameters for the blast monitors were set to 100dB(L) and 0.13mm/s to assist in obtaining a reading. An additional monitor was placed halfway between Blast monitor 1 (McEwen St) and the blast. This monitor recorded 108.5dB(L) overpressure and 0.35mm/s vibration.
8	25	May	14:38:00	Stage 2A	100.2	2.61	105.9	0.16	NM	NM	
9	3	June	12:58:38	Stage 2A	103.1	0.1	99.9	0.12	NM	NM	
10	17	June	14:04:00	Stage 1C	NT	NT	104	0.12	NM	NM	The trigger parameters for the blast monitors were set to 100dB(L) and 0.13mm/s to assist in obtaining a reading. An additional monitor was placed halfway between Blast monitor 1 (McEwen St) and the blast. This monitor recorded 109.4dB(L) overpressure and 0.22mm/s vibration.
11	23	June	14:17:06	Stage 2A	108.8	0.11	103.2	0.12	NM	NM	
12	30	June	15:01:11	Stage 2A	103.1	0.08	NT	NT	NM	NM	
13	14	July	13:05:06	Stage 2A	105	0.45	100.4	0.3	NM	NM	The trigger parameters for the blast monitors were set to 100dB(L) and 0.13mm/s to assist in obtaining a reading. An additional monitor was placed halfway between Blast monitor 1 (McEwen St) and the blast. This monitor recorded 109.5dB(L) overpressure and 1.36mm/s vibration.
14	22	July	13:24:00	Stage 1C	NT	NT	NT	NT	NM	NM	
15	27	July	12:15:00	Stage 2A	NT	NT	NT	NT	NM	NM	The trigger parameters for the blast monitors were set to 100dB(L) and 0.13mm/s to assist in obtaining a reading. An additional monitor was placed halfway between Blast monitor 1 (McEwen St) and the blast. This monitor recorded 107.9dB(L) overpressure and 0.20mm/s vibration.

NT Not Triggered  
 NM Not Monitored

**Blasting Criteria**

Parameter	Units of Measure	Limit	
		95% of blasts per year	100% of blasts
Airblast Overpressure (Linear Peak)	decibels (dB(L))	115	120
Ground Vibration (Peak Particle Velocity)	millimeters per second	5	10

**Comments**

Four blasting events occurred during the monitoring period. All blast monitoring results were within the approved criteria.

**Waste Management****Waste Removal Summary**

Month	January	February	March	April	May	June	July	August	September	October	November	December
Items	Quantity	Quantity	Quantity	Quantity	Quantity	Quantity	Quantity	Quantity	Quantity	Quantity	Quantity	Quantity
General Waste Bin (10m <sup>3</sup> )												
General Waste Bin (4.5m <sup>3</sup> )												
General Waste Bin (6m <sup>3</sup> )												
General Waste Bin (20m <sup>3</sup> )	1				1		1					
Paper & Cardboard Bin (3m <sup>3</sup> )	1	1		1	1	1	1					
Shredded Paper Bin (240L)												
Co Mingled Recycling (2 x 240 L)	4	4	6	4	4	4	4					
Tonner Cartridges												
Waste Oil (L)			1800			800						
Scrap Steel (t)												
Timber (m <sup>3</sup> )												
Engine Coolant (L)												
Oil Filters (240L bin)		3	1									
Batteries			15									
Oily Rags (240L bin)					1							
Aerosols (120L bin)												
Tyres												
Other												
Oily Water (L)												
Grease Waste (L)												