



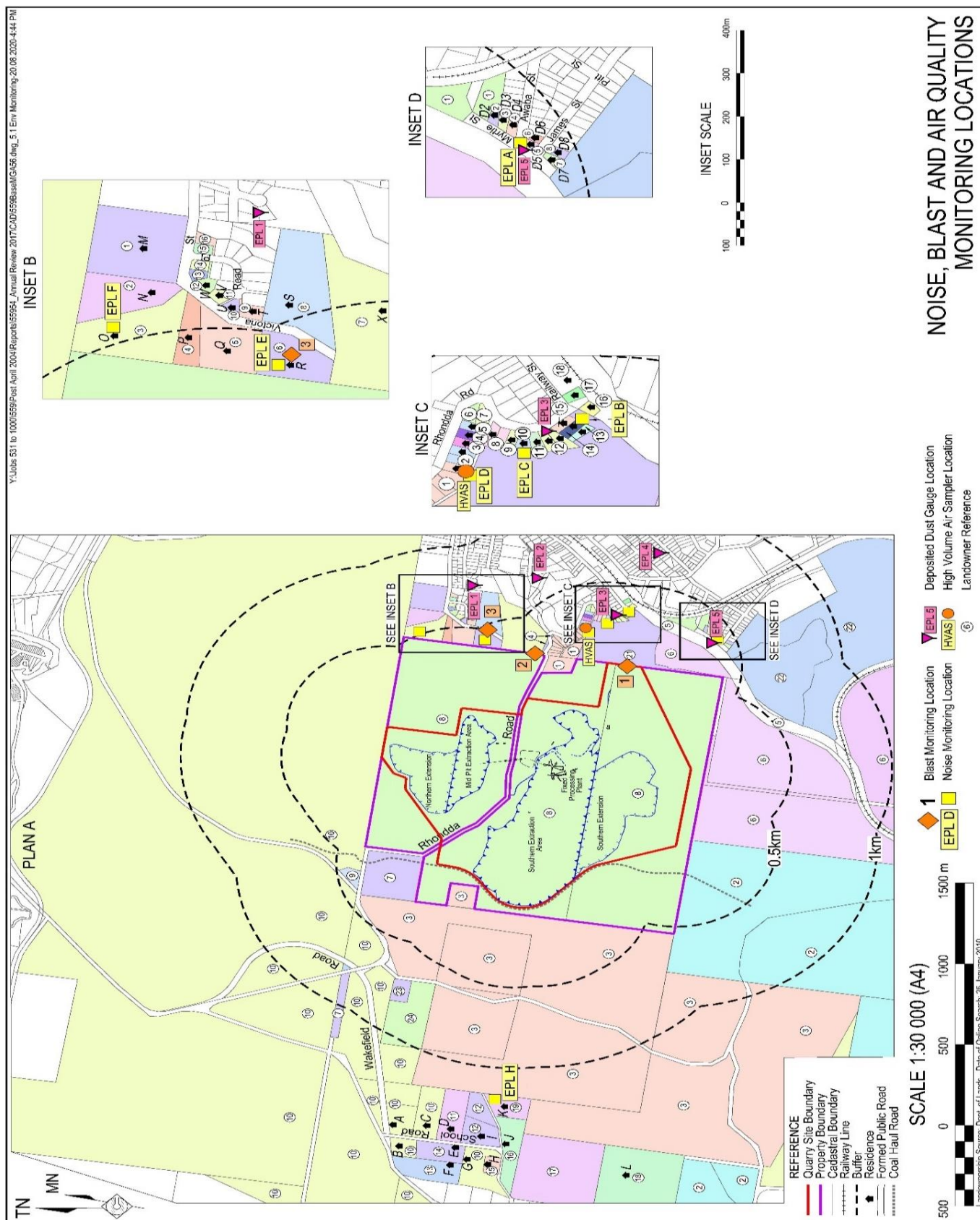
Teralba Quarry Environmental Monitoring Summary

January 2021

Environmental Protection Licence (EPL):	536
Licensee:	Metromix Pty Limited
Licensee Address:	PO Box 1295 Parramatta, NSW 2124
Premises:	Metromix Pty Limited Teralba Quarry Rhondda Road Teralba, NSW 2284
Licensee Website:	https://www.metromix.com.au/
Licensee Website - Monitoring Results:	https://www.metromix.com.au/resources/#quarry
EPA Public Register:	https://www.epa.nsw.gov.au/licensing-and-regulation/public-registers
Prepared by:	R. W. Corkery & Co.
Sample Period:	December 2020
Data Last Data Received	10 February 2021
Date of Report	18 February 2021

Contents

- 1 Deposited Dust
- 2 Particulate Matter (PM₁₀)
- 3 Water
- 4 Meteorological Conditions
- 5 Blasting
- 6 Waste



Deposited Dust

Sample Period Start: 4/01/2021
Sample Period End: 1/02/2021
Sample Frequency: 30 ± 2 days
Sample Collected By: Metromix - GS
Date Received by Laboratory: 1/02/2021
Date Results Received by Metromix: 10/02/2021

EPA Identification No.	Location	Criteria (g/m ² /month)	Insoluble Solids (g/m ² /month)	Ash Fraction (g/m ² /month)	% Ash Fraction
1	Hillside Crescent	4.0	0.7	0.3	43
8	Rodgers Street	4.0	0.7	0.4	57
9	Rhondda Road	4.0	0.7	0.4	57
11	Myrtle Street	4.0	1.0	0.5	50
23	York Street	4.0	1.2	0.7	58

Comments

All deposited dust results remained below the approved criteria for the sample period.

Deposited Dust - Year to Date

	Rhondda Road			Myrtle Street			Hillside Crescent			Rodgers Street			York Street		
	Total Insoluble Solids	Ash Fraction	% Ash	Total Insoluble Solids	Ash Fraction	% Ash	Total Insoluble Solids	Ash Fraction	% Ash	Total Insoluble Solids	Ash Fraction	% Ash	Total Insoluble Solids	Ash Fraction	% Ash
Units	g/m ² /month	g/m ² /month		g/m ² /month	g/m ² /month		g/m ² /month	g/m ² /month		g/m ² /month	g/m ² /month		g/m ² /month	g/m ² /month	
EPA Approved Level	4.0			4.0			4.0			4.0			4.0		
January	0.7	0.4	57	1.0	0.5	50	0.7	0.3	43	0.7	0.4	57	1.2	0.7	58
February															
March															
April															
May															
June															
July															
August															
September															
October															
November															
December															
Annual Average	0.7	0.4	57.0	1.0	0.5	50.0	0.7	0.3	43.0	0.7	0.4	57.1	1.2	0.7	58.3
Annual Maximum	0.7	0.4	57.0	1.0	0.5	50.0	0.7	0.3	43.0	0.7	0.4	57.1	1.2	0.7	58.3
Annual Minimum	0.7	0.4	57.0	1.0	0.5	50.0	0.7	0.3	43.0	0.7	0.4	57.1	1.2	0.7	58.3

Particulate Matter (PM₁₀)

Sample Location: EPA 3 - Rodgers Road
 Sample Frequency: 6 days

Date Sample Taken (24-hr)	Collected by	Date Results Received	PM ₁₀ µg/m ³	Monthly Average Criteria (µg/m ³)	Annual Average Criteria (µg/m ³)
3/01/2021	CBased - MB	11/01/2021	10	50	
9/01/2021	CBased - MB	15/01/2021	5	50	
15/01/2021	CBased - MB	27/01/2021	37	50	
21/01/2021	CBased - MB	27/01/2021	18	50	
27/01/2021	CBased - MB	5/02/2021	20	50	
Monthly Average			18		25/30*

*Project Approval (PA 10_0183) outlines the annual average PM₁₀ criteria to be 30µg/m³. However, EPL 536 Condition R4.5a) requires that the air quality monitoring data is assessed against the Air Impact Assessment Criteria outlined in EPA's *Approved Methods for the Modelling and Assessment of Air Pollutants in NSW*. The most up to date version of this guideline was published in 2017 and outlines the annual average PM₁₀ criteria to be 25µg/m³. Metromix has considered both criteria for its review of particulate matter monitoring.

Comments

All PM₁₀ results remained below the approved criteria for the sample period.

Particulate Matter (PM₁₀) - Year to Date

Date	PM₁₀ (µg/m³)	Monthly Average (µg/m³)	Year to Date Average (µg/m³)	24-Hr Criteria (µg/m³)	Comments
3/01/2021	10		10.0	50	
9/01/2021	5		7.5	50	
15/01/2021	37		17.3	50	
21/01/2021	18		17.5	50	
27/01/2021	20	18.0	18.0	50	

Minimum	5
Maximum	37
Average	18
Standard Deviation	12.23
24-hr Criteria	50
Number of Exceedences	0
Annual Average Criteria	25/30*
Annual Average Criteria Exceeded	No
*See explanation on previous page.	

Water**Water Monitoring****EPL Point 4 - Monthly Monitoring**

Date	Time	Sampled By	Date Results Received		pH	EC	TSS	Oil & Grease	Comments
				Units	pH Units	µS/cm	mg/L	mg/L	
				EPL Criterion*	6.5-8.5	NA	<50	10	
				ANZECC Water Quality Limits	6.5-8.5	125-2200	<50	-	
1/02/2021	12:30pm	Metromix - DB	5/02/2021		7.11	1880	<5	<5	-

EPL Point 5 - Monitoring Daily During Discharge

Date	Time	Sampled By	Date Results Received		pH	EC	TSS	Oil & Grease	Comments
				Units	pH Units	µS/cm	mg/L	mg/L	
				EPL Criterion*	6.5-8.5	NA	<50	10	
				ANZECC Water Quality Limits	6.5-8.5	125-2200	<50		
4/01/2021	3:30pm	Metromix - AL	11/01/2021		7.24	862	6	<5	-

EPL Point 6 - Monthly Monitoring

EPL Point C Monthly Monitoring									
Date	Time	Sampled By	Date Results Received		pH	EC	TSS	Oil & Grease	Comments
				Units	pH Units	µS/cm	mg/L	mg/L	
				EPL Criterion*	6.5-8.5	NA	<50	10	
				ANZECC Water Quality Limits	6.5-8.5	125-2200	<50	-	
No discharge occurred at this location and therefore no monitoring was required									

EPL Point 7 - Monthly Monitoring

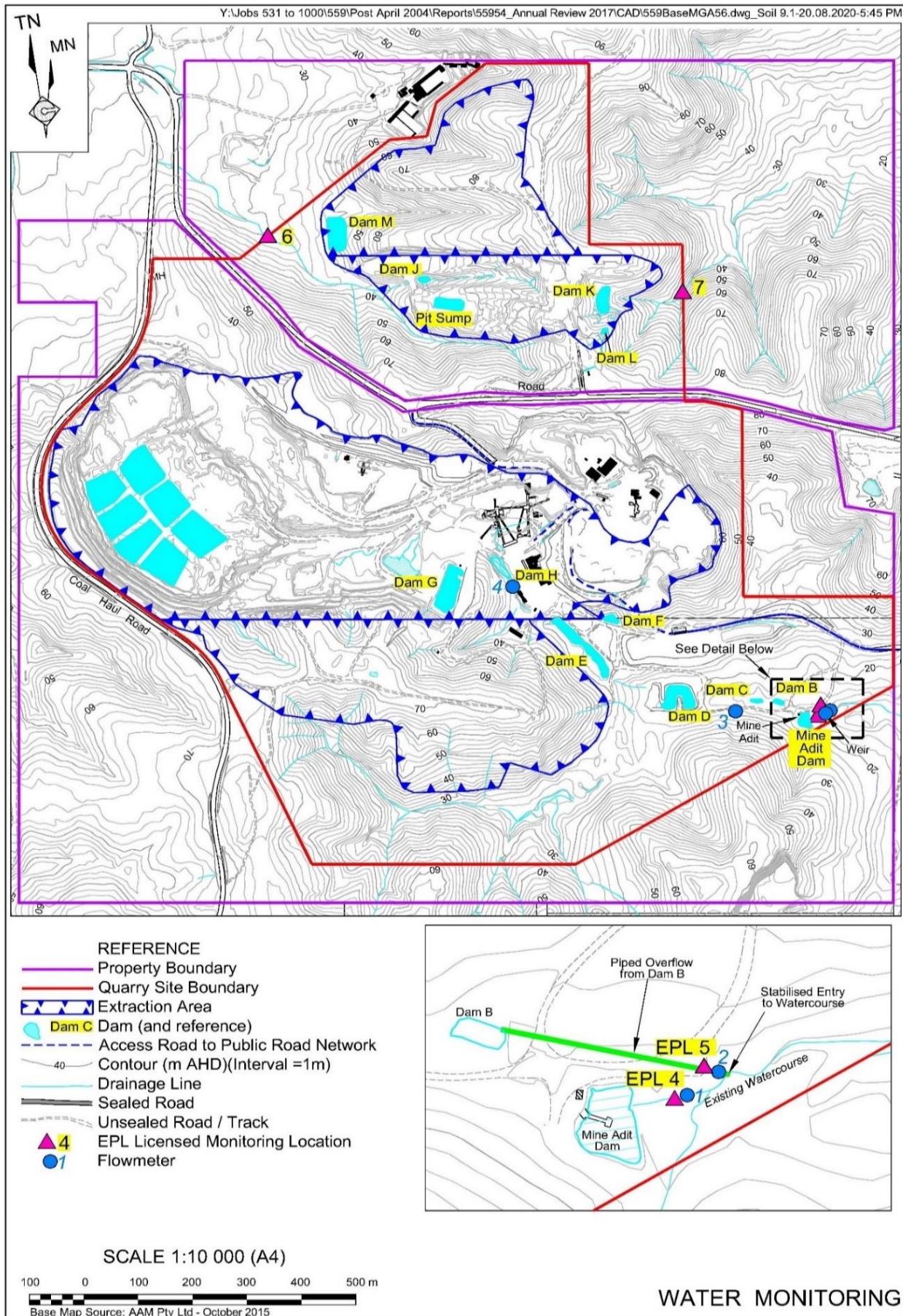
Date	Time	Sampled By	Date Results Received		pH	EC	TSS	Oil & Grease	Comments
				Units	pH Units	µS/cm	mg/L	mg/L	
				EPL Criterion*	6.5-8.5	NA	<50	10	
				ANZECC Water Quality Limits	6.5-8.5	125-2200	<50	-	
No discharge occurred at this location and therefore no monitoring was required									

Flow Meter Records

EPA Identified Point	Location	Description	Sample Period	Daily Average Flow ML	Monthly Total Flow ML
4	Adit Dam	Adit Dam to Creek (off site)	4/01/2021 to 1/02/2021	1.20	33.52
5	Dam B	Discharge from Dam B (from Quarry)	4/01/2021 to 1/02/2021	N/A	0
4	Adit Dam	Water pumped from Adit Dam to Dam G (processing use)	4/01/2021 to 1/02/2021	N/A	80.94

Comments

All water monitoring results remained within the approved criteria levels during the monitoring period.



Water - Year to Date**EPL Point 4 : Monthly Monitoring**

	pH	EC	TSS	Oil & Grease	Comments
Units	pH Units	µS/cm	mg/L	mg/L	-
EPL Criterion*	6.5-8.5	NA	<50	10	-
ANZECC Water Quality Limits	6.5-8.5	125-2200	<50	<5	-
January	7.11	1880	<5	<5	-
February					
March					
April					
May					
June					
July					
August					
September					
October					
November					
December					

EPL Point 5 : Monitoring During Discharge

	pH	EC	TSS	Oil & Grease	Comments
Units	pH Units	µS/cm	mg/L	mg/L	-
EPL Criterion*	6.5-8.5	NA	<50	10	-
ANZECC Water Quality Limits	6.5-8.5	125-2200	<50	-	-
4/01/2021	7.24	862	6	<5	-

Flow Meter Records

EPA Identifier	Location	Description	Date	Monthly Total
4	Adit Dam	Water pumped from Adit Dam to Dam G (processing use)	4/01/2021	80.9

EPA Identified	Location	Description	Date	Monthly Total
5	Dam B	Discharge from Dam B (from Quarry)	4/01/2021	0.0

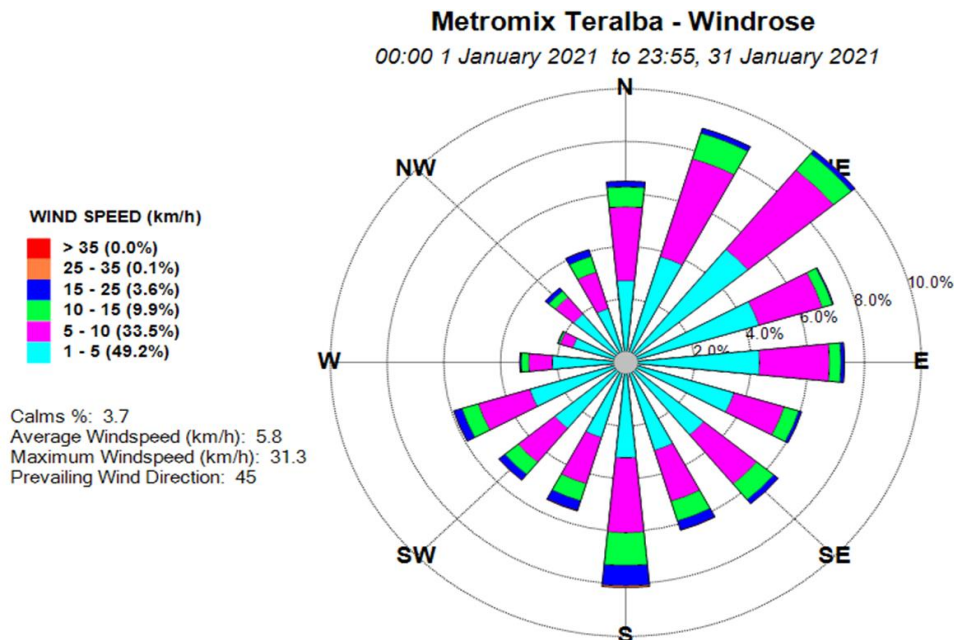
EPA Identified	Location	Description	Date	Monthly Total
4	Adit Dam	Adit Dam to Creek (off site)	4/01/2021	33.5

Meteorological Conditions

Monitoring Location: Mid-Pit Entrance

Monitoring Frequency: Continuous

Windrose



Monthly Summary

Date	Mean Wind Direction (°)	Mean Wind Speed (km/h)	Daily Rainfall (mm)	Mean Sigma Theta	Max Temperature (°C) at 2m	Min Temperature (°C) at 2m
1/1/2021	180.6	5.6	10.2	36.8	19.6	16.6
2/1/2021	183.5	4.0	3	34.8	21.4	16.4
3/1/2021	115.3	4.7	0.4	25.5	27.2	18.8
4/1/2021	149.1	4.9	13.4	23.7	29.3	18.4
5/1/2021	189.1	4.7	0.4	31.6	31.2	17.0
6/1/2021	172.0	6.7	0.6	40.2	25.8	19.6
7/1/2021	154.8	7.5	2.2	40.8	25.0	18.0
8/1/2021	188.9	6.1	0.6	37.5	24.8	16.6
9/1/2021	171.8	4.3	7.4	35.7	26	16.2
10/1/2021	147.3	3.7	0	29.1	27.2	16.0
11/1/2021	116.5	4.7	0	27.1	28.8	16.6
12/1/2021	147.8	4.2	0	29.2	32.0	17.0
13/1/2021	102.7	4.7	0	30.2	30.2	18.4
14/1/2021	171.6	7.5	14.2	26.0	36.8	18.8
15/1/2021	146.0	5.8	0.6	33.6	29.0	20.6
16/1/2021	202.0	8.4	0	24.7	27.2	17.2
17/1/2021	177.2	4.6	0	29.0	26.8	15.2
18/1/2021	146.3	4.5	0	28.0	31.8	18.6
19/1/2021	175.0	6.1	0.8	37.1	26.6	17.2
21/1/2021	168.5	4.2	2	35.6	23.4	16.0
21/1/2021	153.9	4.8	0.2	27.8	27.8	14.2
22/1/2021	136.1	5.8	0	26.3	35.8	16.2
23/1/2021	131.4	6.6	0	28.5	34.2	24.2
24/1/2021	70.5	5.9	0	24.2	37.6	20.8
25/1/2021	101.0	5.9	0	26.2	37.0	18.8
26/1/2021	142.6	8.9	0	26.5	39.2	21.4
27/1/2021	199.2	10.8	12.6	35.7	29.2	18.8
28/1/2021	146.1	8.6	40.8	38.1	20.4	18.4
29/1/2021	88.0	5.7	11.2	31.7	21.6	18.7
30/1/2021	105.6	4.2	9.4	25.9	28.4	20.4
31/1/2021	189.3	6.2	0	32.0	26.6	19.4

Meteorological Conditions - Year to Date

Monitored Parameter	Jan	Feb	Mar	Apr	May	Jun	Jul	Aug	Sep	Oct	Nov	Dec	Annual
Total Rainfall (mm)	130.0												
Average Minimum Temperature (°C) at 2m	18.1												
Average Maximum Temperature (°C) at 2m	28.6												
Average Minimum Temperature (°C) at 10m	18.5												
Average Maximum Temperature (°C) at 10m	27.3												
Average Sigma Theta	30.9												
Average Solar Radiation (W/m ²)	214.6												
Average Relative Humidity (%)	71.7												

Blasting

Monitoring Frequency:
Blast Monitoring Completed By:

Each Blast
Orica (Blast 1 to 12)
MAXAM (Blast 13)

Shot #	Day	Month	Time	Location	Location 1		Location 2		Location 3		Comments
					Overpressue dB(L)	Vibration mm/s	Overpressue dB(L)	Vibration mm/s	Overpressue dB(L)	Vibration mm/s	
1	22	January	11:52:04	Stage 2A	101.7	0.2	NT	NT	NM	NM	The trigger parameters for the blast monitors were reduced to 100dBL and 0.13mm/s to assist in obtaining a reading. An additional monitor was placed halfway between Blast monitor 1 (McEwen St) and the blast. This monitor recorded 111.7dBL overpressure and 0.35mm/s vibration.

NT Not Triggered
NM Not Monitored

Blasting Criteria

Parameter	Units of Measure	Limit	
		95% of blasts per year	100% of blasts
Airblast Overpressure (Linear Peak)	decibels (dBL)	115	120
Ground Vibration (Peak Particle Velocity)	millimeters per second (mm/s)	5	10

Comments

One blasting event occurred during the monitoring period. All blast monitoring results were within the approved criteria.

Waste Management

Waste Removal Summary

Month	January	February	March	April	May	June	July	August	September	October	November	December
Items	Quantity	Quantity	Quantity	Quantity	Quantity	Quantity	Quantity	Quantity	Quantity	Quantity	Quantity	Quantity
General Waste Bin (10m ³)												
General Waste Bin (4.5m ³)												
General Waste Bin (6m ³)												
General Waste Bin (20m ³)	1											
Paper & Cardboard Bin (3m ³)	1											
Shredded Paper Bin (240L)												
Co Mingled Recycling (2 x 240 L)	4											
Tonner Cartridges												
Waste Oil (L)												
Scrap Steel (t)												
Timber (m ³)												
Engine Coolant (L)												
Oil Filters (240L bin)												
Batteries												
Oily Rags (240L bin)												
Aerosols (120L bin)												
Tyres												
Other												
Oily Water (L)												
Grease Waste (L)												