

Safe Site Delivery Checklist

Item Requirement

- Traffic safe access and exit on and off site
- Traffic clear access for pedestrians and workers
- Traffic when delivering from roadside, traffic control cones and signs supplied by customer
- To assist in conditions involving reversing in darkness, low clearance, obstacles, tight access or high vehicle and/or pedestrian traffic a reversing spotter (traffic controller) is required.
- Truck Driver a PPE is worn
- Truck Driver only driver operates truck and mechanisms
- Truck Driver stay clear of truck whilst another is reversing
- On site delivery area clear of rubbish (eg slip/trip hazards, sharp objects)
- On site adequate lighting for night work
- Overhead at least a 3m distance from power lines



Metromix

Rhondda Road
TERALBA NSW 2284

Phone: 02 4950 6640
Fax: 02 4958 7201
Web: www.metromix.com.au



Metromix

Safe Site Delivery of Quarry Products



The provision of a safe working environment is the responsibility of the owner of the project, principal contractor, customer, and all parties involved in the project.

Tel: 02 4950 6640

Safe Site Delivery of Quarry Products

The purpose of this document is to provide guidelines in relation to ensuring a safe environment through good practices, and by mitigating hazards that have been identified and assessed as a potential risk to tip-per truck drivers, the public and all involved in delivery of quarry products to site. Issues to assist in creating a safe working environment include:

What is required of the customer?

Safe Site Access

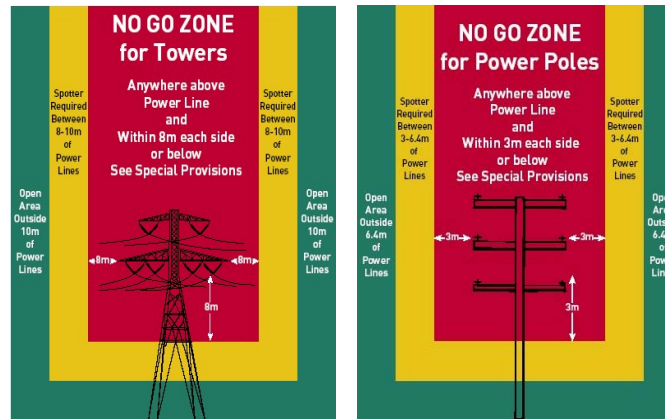
- Safe and legal entry to site
- a spotter (traffic controller) to assist in conditions involving reversing in darkness, low clearance, obstacles, tight access or high vehicle and/or pedestrian traffic
- traffic control where necessary on public roads by competent personnel
- safe route to the unloading point (including adequate signage)
- level, compacted stable ground surface (freshly filled ground can present a problem for heavy trucks)
- delivery point is clear of any building rubbish or materials
- safe exit from site
- ensuring a safe area is selected to pull off the road and that no road rules are breached if road side delivery is required

Electricity

LOOK UP AND LIVE

LOOK UP AND LIVE

- Observing the following clearances* from live overhead powerlines/conductors
- >up to 132,000 volts - 3 metres
- >between 132,000 volts and
- >over 330,000 volts - 6 metres
- >over 330,000 volts - 8 metres



Environment

- Delivery times arranged to not cause undue noise nuisance to site neighbours
- roadside delivery points having appropriate environmental controls to prevent quarry products washing into drains and waterways
- provision of safe and contained areas for the truck to wash down tyres (if required)
- sites having appropriate controls to prevent trucks taking mud onto roads

General

- Customers and contractors are not permitted to operate or access any part of the truck
- clear marking of excavations/holes
- provision by the customer of a list of any hazardous substances on site which drivers/staff may come in contact with
- be advised (with sufficient notice) any changes to site access and delivery areas
- clear instructions on any other requirements on the site

What is required of the driver?

INSPECT THE SITE – IF IN DOUBT – DO NOT TIP

- Follow all site Occupational Health Safety (OHS) requirements including Personal Protective Equipment (PPE) *i.e.* minimum standard PPE for the discharge of quarry products is safety glasses, steel cap boots, high vis clothing and hearing protection.
- report any uncontrolled hazards to the customer or contractor
- report any uncontrolled hazards to the customer or contractor
- report any uncontrolled hazards to the customer or contractor
- do not drive away if the truck body is in a raised position
- when being directed on site by a spotter do not continue if person cannot be clearly seen

NO SEE – NO MOVE

- If in doubt about the safety of proceeding seek assistance from a responsible person either on site or at the plant
- ensure wheels are free of material when exiting

Product Safety Information

- Customers need to ensure that all personnel who handle product are aware of the product Material Safety Data Sheet (MSDS) obtainable from 02 4950 6640 or www.metromix.com.au

Follow local authority guidelines for disposal of waste. See MSDS.